

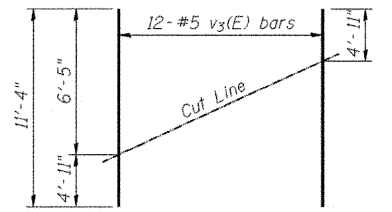
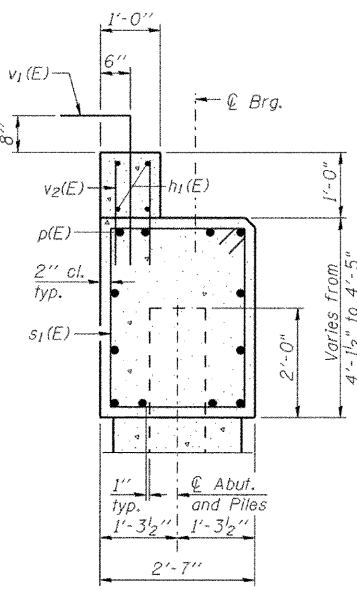
BILL OF MATERIAL

Bar	No.	Size	Length	Shape
h(E)	60	#6	13'-6"	—
h1(E)	4	#5	25'-11"	—
p(E)	12	#8	26'-11"	—
s1(E)	30	#5	12'-11"	□
u(E)	8	#6	7'-4"	□
v1(E)	27	#5	4'-4"	┌
v2(E)	27	#5	1'-10"	—
v3(E)	24	#5	11'-4"	—
Structure Excavation Cu. Yd. 86				
Concrete Structures Cu. Yd. 16.8				
Concrete Encasement Cu. Yd. 1.8				
Reinforcement Bars, Epoxy Coated Pound 3140				
Furnishing Steel Foot 136				
Piles HP 12x63 Foot 136				
Driving Piles Foot 136				
Test Pile Steel HP 12x63 Each 1				
Pile Shoes Each 5				
Concrete Sealer Sq Ft 216				
Geocomposite Wall Drain Sq Yd 30				
Pipe Underdrains for Structures, 4" Foot 54				

PILE DATA

Type: HP 12x63 w/ metal shoes
 Nominal Required Bearing: 497 kips
 Factored Resistance Available: 273 kips
 Est. Length: 34 feet
 No. Production Piles: 4
 No. Test Piles: 1

Notes:
 For details of piles and Concrete Encasement, see sheet 23.
 Cast backwall and top portion of wingwall after beams have been erected.
 Concrete sealer shall be applied to exposed concrete surfaces of wingwall and abutment, including bearing seat, front face and top face of backwall.



Order v3(E) bars full length. Cut as shown and use remainder of bars in opposite face.

