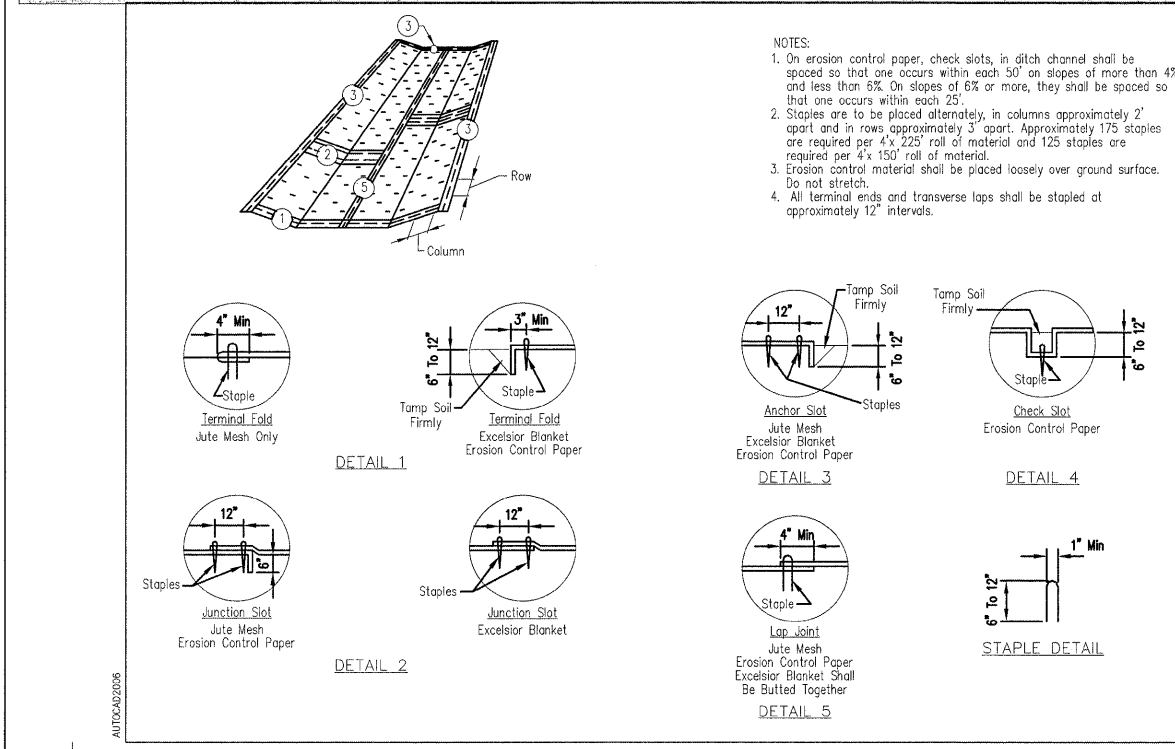


NOTE: CONTRACTOR SHALL CONTACT FOX METRO WATER RECLAMATION DISTRICT IN ADVANCE OF WORK TO ADJUST MANHOLE FRAME & GRATE & SCHEDULE INSPECTION FOR DISTRICT PERSONNEL TO OBSERVE WORK ON DISTRICT FACILITIES.



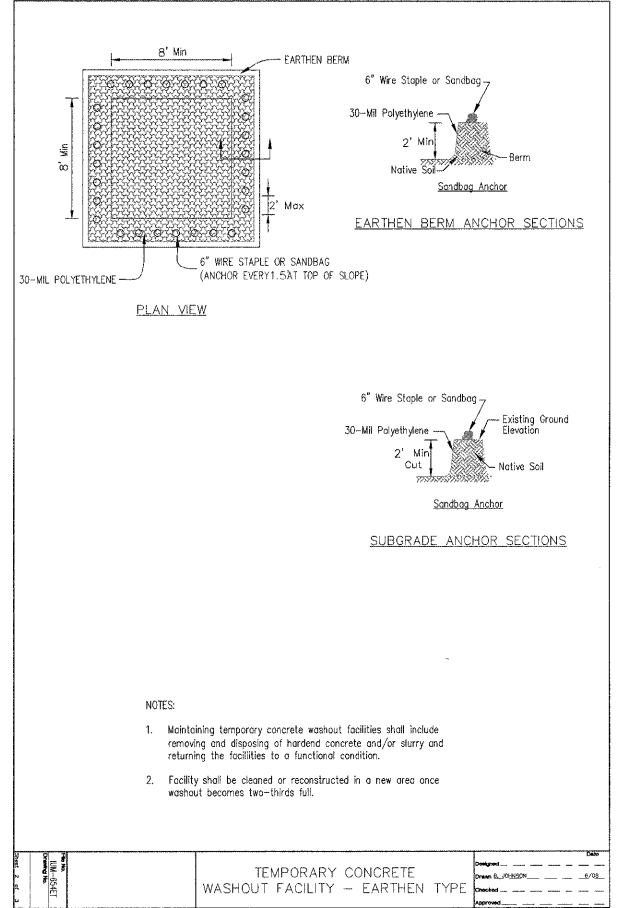
**EROSION BLANKET INSTALLATION DETAILS**

PLAN NO. 45-114-5 MAY 1998

HILGEN BRIDGE  
AURORA TOWNSHIP  
KANE COUNTY  
STA. 11+62.8

ILL-ENG-61  
Drawing by

Sheet 1 of 1



**NOTES:**  
1. Maintaining temporary concrete washout facilities shall include removing and disposing of hardened concrete and/or slurry and returning the facilities to a functional condition.  
2. Facility shall be cleaned or reconstructed in a new area once washout becomes two-thirds full.

DESIGNED	-	JJT	REVISED	-
DRAWN	-	ASK	REVISED	-
CHECKED	-	JJT	REVISED	-
DATE	-	10/7/2011	REVISED	-

F.A.P. RTE.	SECTION	COUNTY	TOTAL SHEETS	SHEET NO.
	03-01130-00-BR	KANE	33	33
	D-91-352-04			CONTRACT NO. 63660
	FED. ROAD DIST. NO. _	ILLINOIS	FED. AID PROJECT	