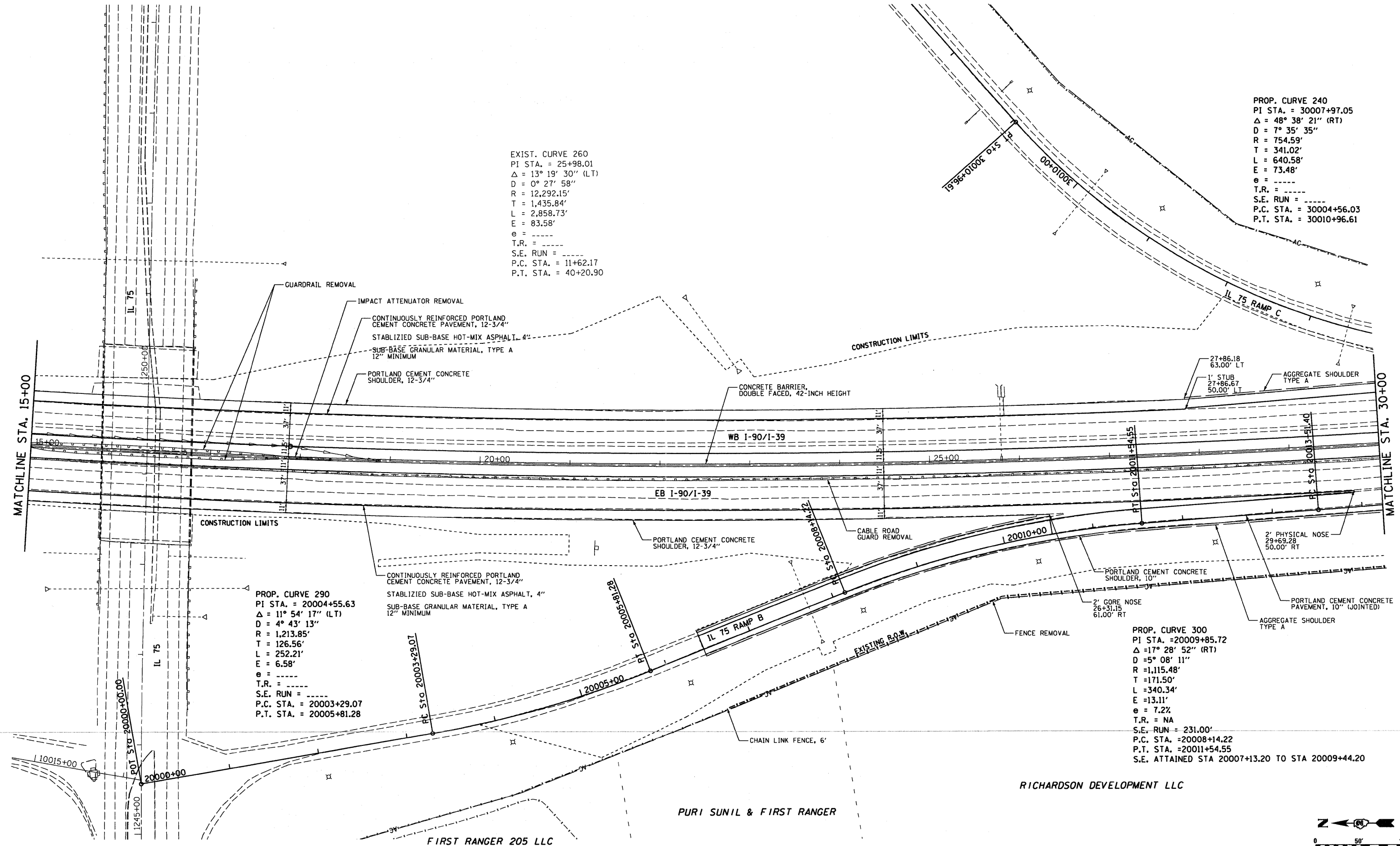


PROP. CURVE 240  
 PI STA. = 30007+97.05  
 $\Delta = 48^\circ 38' 21''$  (RT)  
 $D = 7^\circ 35' 35''$   
 $R = 754.59'$   
 $T = 341.02'$   
 $L = 640.58'$   
 $E = 73.48'$   
 $e = \text{---}$   
 $T.R. = \text{---}$   
 $S.E. RUN = \text{---}$   
 $P.C. STA. = 30004+56.03$   
 $P.T. STA. = 30010+96.61$

EXIST. CURVE 260  
 PI STA. = 25+98.01  
 $\Delta = 13^\circ 19' 30''$  (LT)  
 $D = 0^\circ 27' 58''$   
 $R = 12,292.15'$   
 $T = 1,435.84'$   
 $L = 2,858.73'$   
 $E = 83.58'$   
 $e = \text{---}$   
 $T.R. = \text{---}$   
 $S.E. RUN = \text{---}$   
 $P.C. STA. = 11+62.17$   
 $P.T. STA. = 40+20.90$

PROP. CURVE 290  
 PI STA. = 20004+55.63  
 $\Delta = 11^\circ 54' 17''$  (LT)  
 $D = 4^\circ 43' 13''$   
 $R = 1,213.85'$   
 $T = 126.56'$   
 $L = 252.21'$   
 $E = 6.58'$   
 $e = \text{---}$   
 $T.R. = \text{---}$   
 $S.E. RUN = \text{---}$   
 $P.C. STA. = 20003+29.07$   
 $P.T. STA. = 20005+81.28$

PROP. CURVE 300  
 PI STA. = 20009+85.72  
 $\Delta = 17^\circ 28' 52''$  (RT)  
 $D = 5^\circ 08' 11''$   
 $R = 1,115.48'$   
 $T = 171.50'$   
 $L = 340.34'$   
 $E = 13.11'$   
 $e = 7.2\%$   
 $T.R. = NA$   
 $S.E. RUN = 231.00'$   
 $P.C. STA. = 20008+14.22$   
 $P.T. STA. = 20011+54.55$   
 $S.E. ATTAINED STA 20007+13.20 TO STA 20009+44.20$



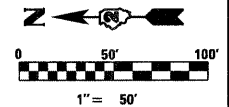
MATCHLINE STA. 15+00

MATCHLINE STA. 30+00

PURI SUNIL & FIRST RANGER

FIRST RANGER 205 LLC

RICHARDSON DEVELOPMENT LLC



	USER NAME = .USERNAME.	DESIGNED -	REVISED -	<p align="center"><b>STATE OF ILLINOIS</b>  <b>DEPARTMENT OF TRANSPORTATION</b></p>	<p align="center"><b>PLAN SHEETS - I-90</b></p>			F.A. RTE.	SECTION	COUNTY	TOTAL SHEETS	SHEET NO.
	FILE NAME = #FILE#	DRAWN - BSL	REVISED -		90	(X2-1) R	WINNEBAGO	510	80			
	PLOT SCALE = 58.0000' / 1IN.	CHECKED - PDS	REVISED -	SCALE: N/A	SHEET NO.	OF SHEETS	STA. 15+00	TO STA. 30+00	<p align="center">CONTRACT NO. 64C29</p>			
	PLOT DATE = 10/19/2011	DATE - 10-21-2011	REVISED -	<p align="center">ILLINOIS FED. AID PROJECT</p>								