

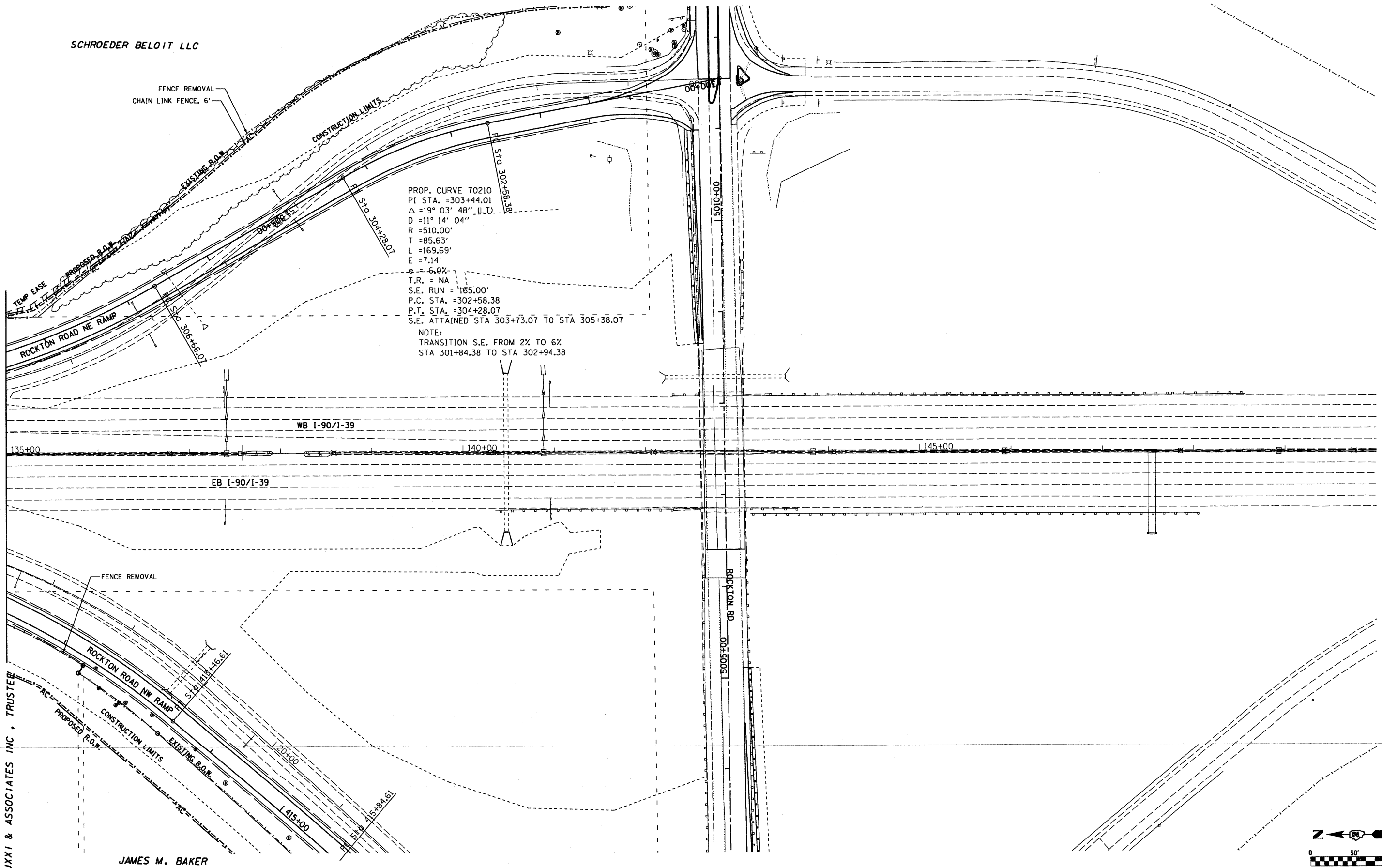
SCHROEDER BELOIT LLC

FENCE REMOVAL
CHAIN LINK FENCE, 6'

PROP. CURVE 70210
 PI STA. = 303+44.01
 $\Delta = 19^\circ 03' 48''$ (L.T.)
 $D = 11^\circ 14' 04''$
 $R = 510.00'$
 $T = 85.63'$
 $L = 169.69'$
 $E = 7.14'$
 $e = -6.0\%$
 $T.R. = NA$
 $S.E. RUN = 165.00'$
 $P.C. STA. = 302+58.38$
 $P.T. STA. = 304+28.07$
 $S.E. ATTAINED STA 303+73.07 TO STA 305+38.07$

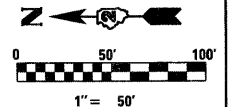
NOTE:
 TRANSITION S.E. FROM 2% TO 6%
 STA 301+84.38 TO STA 302+94.38

MATCHLINE STA. 135+00



AUXI & ASSOCIATES INC., TRUSTER

JAMES M. BAKER



 	USER NAME = .USERNAME. FILE NAME = #FILE# PLOT SCALE = 50.0000' / IN. PLOT DATE = 10/19/2011	DESIGNED - DRAWN - BSL CHECKED - PDS DATE - 10-21-2011	REVISED - REVISED - REVISED - REVISED -	STATE OF ILLINOIS DEPARTMENT OF TRANSPORTATION	PLAN SHEETS - I-90			F.A. RTE. 90	SECTION (X2-1) R	COUNTY WINNEBAGO	TOTAL SHEETS 510	SHEET NO. 88
	SCALE: N/A SHEET NO. OF SHEETS STA. 135+00 TO STA. 150+00				CONTRACT NO. 64C29 ILLINOIS FED. AID PROJECT							