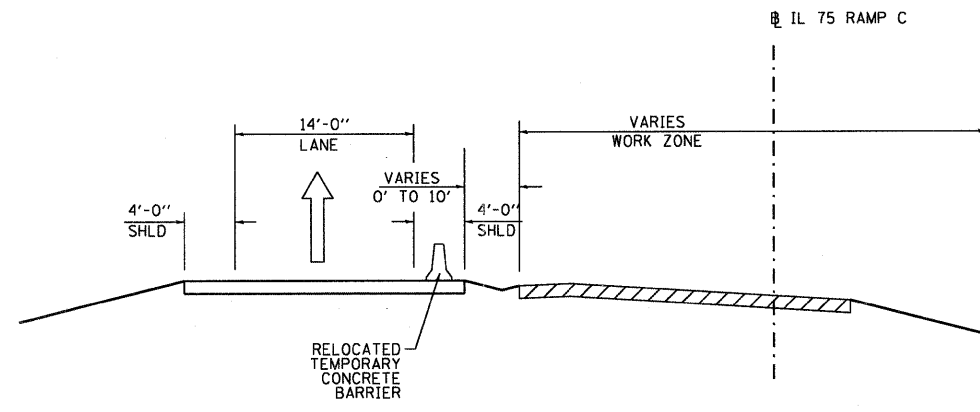


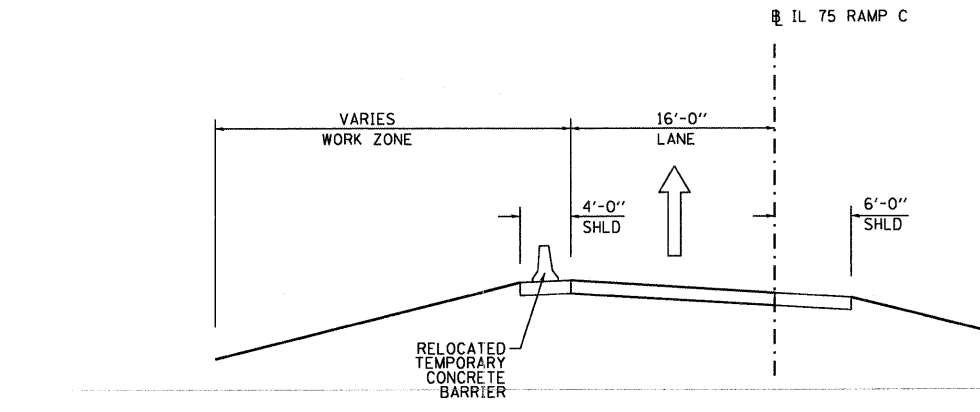
STAGE 1A IL 75 RAMP C
TYPICAL SECTION
STA 30005+26.20 TO STA 30008+37.99

- STAGE 1A**
1. TRAFFIC REMAINS ON EXISTING LANE AND EXISTING RIGHT SHOULDER.
 2. CONSTRUCT TEMPORARY RAMP.
 3. INSTALL TEMPORARY CONCRETE BARRIER TO BE USED IN STAGE 1B.



STAGE 1B IL 75 RAMP C
TYPICAL SECTION
STA 30003+14.50 TO STA 30005+70.00

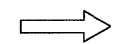

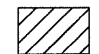

- STAGE 1B**
1. TRAFFIC SHIFTS TO TEMPORARY RAMP.
 2. CONSTRUCT PROPOSED RAMP.
 3. CONSTRUCT GORE AREA.
 4. CONSTRUCT RIGHT SHOULDER AND DITCH.
 5. RELOCATE TEMPORARY CONCRETE BARRIER TO BE USED IN STAGE 1C.



STAGE 1C IL 75 RAMP C
TYPICAL SECTION
STA 30004+90.63 TO STA 30015+70.00

- STAGE 1C**
1. TRAFFIC SHIFTS TO PROPOSED RAMP.
 2. REMOVE TEMPORARY PAVEMENT.
 3. REGRADE SLOPES.
 4. REMOVE TEMPORARY CONCRETE BARRIER.

LEGEND

-  TRAFFIC LANE
-  TEMPORARY CONCRETE BARRIER
-  PROPOSED PAVEMENT/SHOULDER
-  TEMPORARY PAVEMENT - SEE DETAIL