

SEE SHT 108 FOR RAMP MOT DETAIL



WORK ZONE
SPEED LIMIT
55
RESUMES

\$375 FINE
MINIMUM

W2-1115(0)-3618
R2-1-3648
W2-1113(0)-3612
R2-1106-3618
STA 134+20

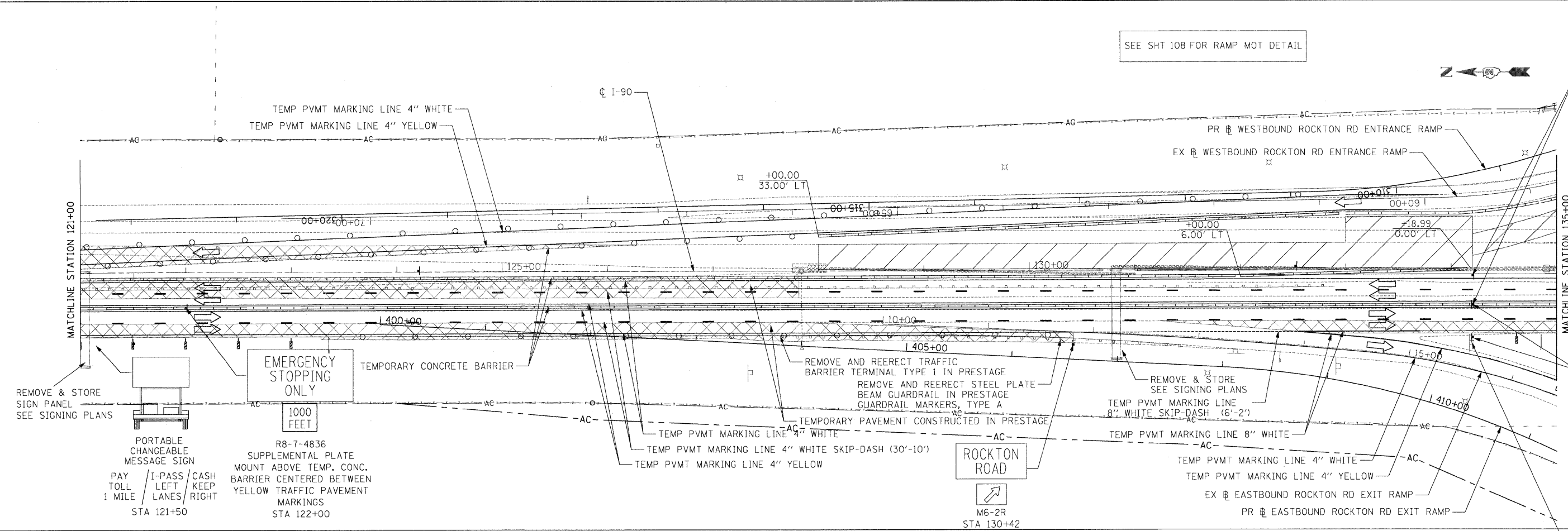
WORK ZONE
SPEED LIMIT
45
BEGINS

\$375 FINE
MINIMUM

W2-1115(0)-3618
R2-1-3648
W2-1113(0)-3612
R2-1106-3618
STA 134+20

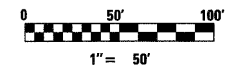
EXIT
3

STA: 132+67 RT
90-WP-91 EXISTING
SIGN PANEL
& SUPPORT
TO REMAIN



LEGEND

- WORK ZONE
- TEMPORARY PAVEMENT
- TEMPORARY CONCRETE BARRIER
- DIRECTION OF TRAFFIC
- DRUMS WITH BI-DIRECTIONAL STEADY BURN LIGHTS @ 50' CENTERS, 25' CENTERS ALONG TAPERS
- IMPACT ATTENUATOR, TEMPORARY
- VERTICAL PANEL
- TYPE III BARRICADE WITH FLASHING LIGHTS



McClure LOCHNER
Engineering Architects, Inc.
RVA
QUICK ENGINEERS INC.

USER NAME = .USERNAME.	DESIGNED - CGC	REVISED -
PLOT SCALE = 50.0000' / IN.	DRAWN - CGC	REVISED -
PLOT DATE = 10/19/2011	CHECKED - AM	REVISED -
	DATE - 10/14/2011	REVISED -

**STATE OF ILLINOIS
DEPARTMENT OF TRANSPORTATION**

MOT I-90 STAGE 1A

SCALE: 1"=50' SHEET NO. OF SHEETS STA. 121+00 TO STA. 135+00

F.A.I. RTE. 90	SECTION (X2-1)R	COUNTY WINNEBAGO	TOTAL SHEETS 510	SHEET NO. 151
CONTRACT NO. 64C29			ILLINOIS FED. AID PROJECT	