



SEE SHT 101 FOR RAMP MOT DETAIL



RELOCATED EXISTING SIGN FROM STAGE 1A

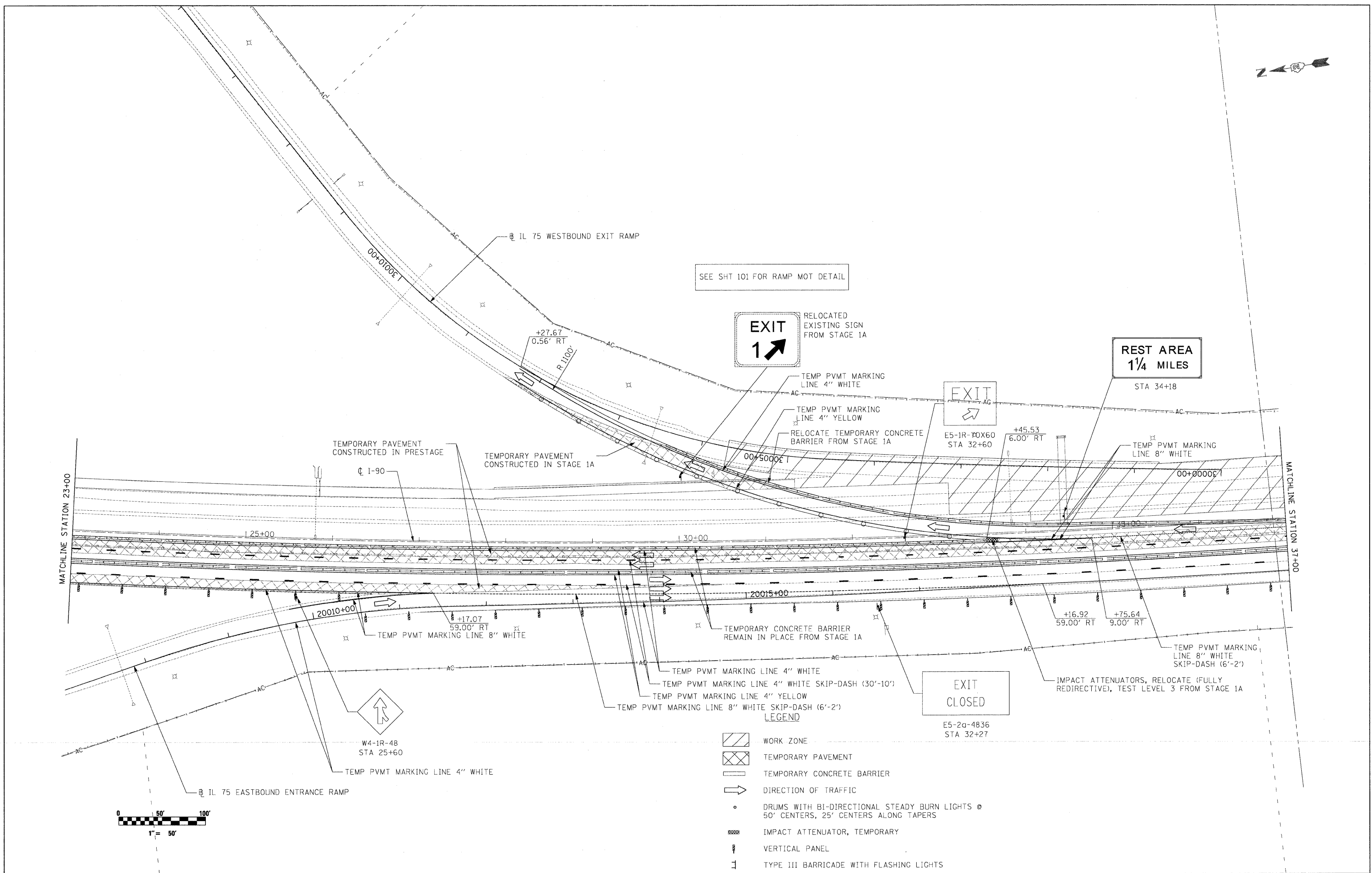


E5-1R-10X60 STA 32+60

REST AREA 1/4 MILES
STA 34+18



E5-2a-4836 STA 32+27



TEMPORARY PAVEMENT CONSTRUCTED IN PRESTAGE
TEMPORARY PAVEMENT CONSTRUCTED IN STAGE 1A

+17.07
59.00' RT
TEMP PVMT MARKING LINE 8" WHITE

TEMPORARY CONCRETE BARRIER REMAIN IN PLACE FROM STAGE 1A

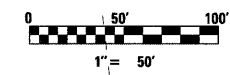
+16.92
59.00' RT
+75.64
9.00' RT

TEMP PVMT MARKING LINE 8" WHITE SKIP-DASH (6'-2')

TEMP PVMT MARKING LINE 4" WHITE
TEMP PVMT MARKING LINE 4" WHITE SKIP-DASH (30'-10')
TEMP PVMT MARKING LINE 4" YELLOW
TEMP PVMT MARKING LINE 8" WHITE SKIP-DASH (6'-2')

LEGEND

- WORK ZONE
- TEMPORARY PAVEMENT
- TEMPORARY CONCRETE BARRIER
- DIRECTION OF TRAFFIC
- DRUMS WITH BI-DIRECTIONAL STEADY BURN LIGHTS @ 50' CENTERS, 25' CENTERS ALONG TAPERS
- IMPACT ATTENUATOR, TEMPORARY
- VERTICAL PANEL
- TYPE III BARRICADE WITH FLASHING LIGHTS



McClure LOCHNER
Engineering Associates, Inc.
RWA
Engineering Associates, Inc.

USER NAME = .USERNAME.
DESIGNED - CGC
DRAWN - CGC
CHECKED - AM
DATE - 10/14/2011

REVISED -
REVISED -
REVISED -
REVISED -

STATE OF ILLINOIS
DEPARTMENT OF TRANSPORTATION

MOT I-90 STAGE 1B

SCALE: 1"=50' SHEET NO. OF SHEETS STA. 23+00 TO STA. 37+00

| F.A.I. RTE. | SECTION | COUNTY | TOTAL SHEETS | SHEET NO. |
|--------------------|---------|-----------|---------------------------|-----------|
| 90 | (X2-1)R | WINNEBAGO | 510 | 161 |
| CONTRACT NO. 64C29 | | | ILLINOIS FED. AID PROJECT | |