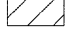


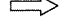





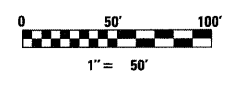
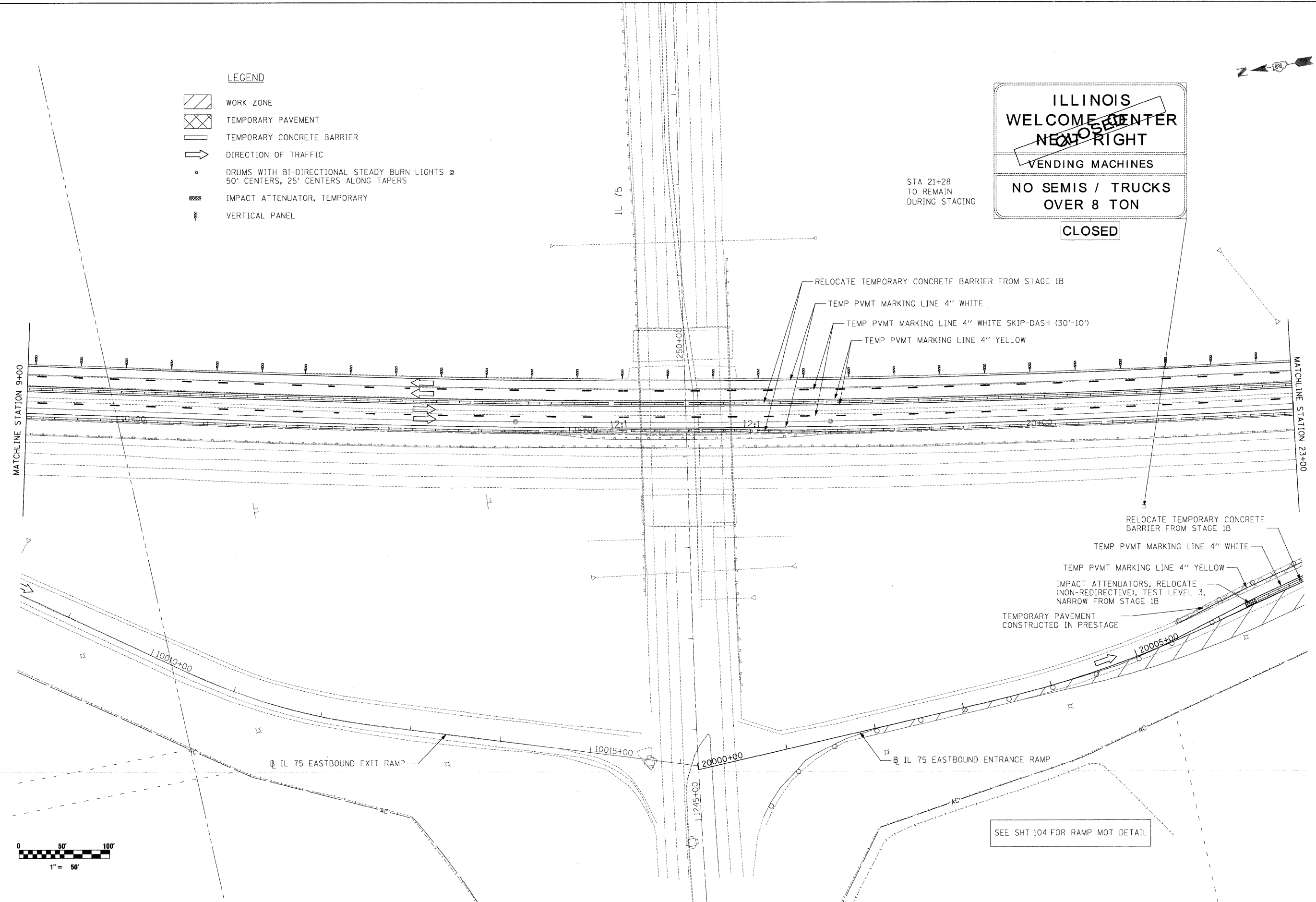


LEGEND

-  WORK ZONE
-  TEMPORARY PAVEMENT
-  TEMPORARY CONCRETE BARRIER
-  DIRECTION OF TRAFFIC
-  DRUMS WITH BI-DIRECTIONAL STEADY BURN LIGHTS @ 50' CENTERS, 25' CENTERS ALONG TAPERS
-  IMPACT ATTENUATOR, TEMPORARY
-  VERTICAL PANEL

**ILLINOIS
WELCOME CENTER
NEAR RIGHT
VENDING MACHINES
NO SEMIS / TRUCKS
OVER 8 TON
CLOSED**

STA 21+28
TO REMAIN
DURING STAGING



  	USER NAME = .USERNAME.	DESIGNED - CGC	REVISED -	STATE OF ILLINOIS DEPARTMENT OF TRANSPORTATION	MOT I-90 STAGE 2A	F.A.I. RTE. 90	SECTION (X2-1)R	COUNTY WINNEBAGO	TOTAL SHEETS 510	SHEET NO. 174
	PLOT SCALE = 50.0000' / IN.	CHECKED - AM	REVISED -			SCALE: 1"=50'	SHEET NO. OF SHEETS	STA. 9+00 TO STA. 23+00	CONTRACT NO. 64C29 [ILLINOIS] FED. AID PROJECT	
	PLOT DATE = 10/19/2011	DATE - 10/14/2011	REVISED -							