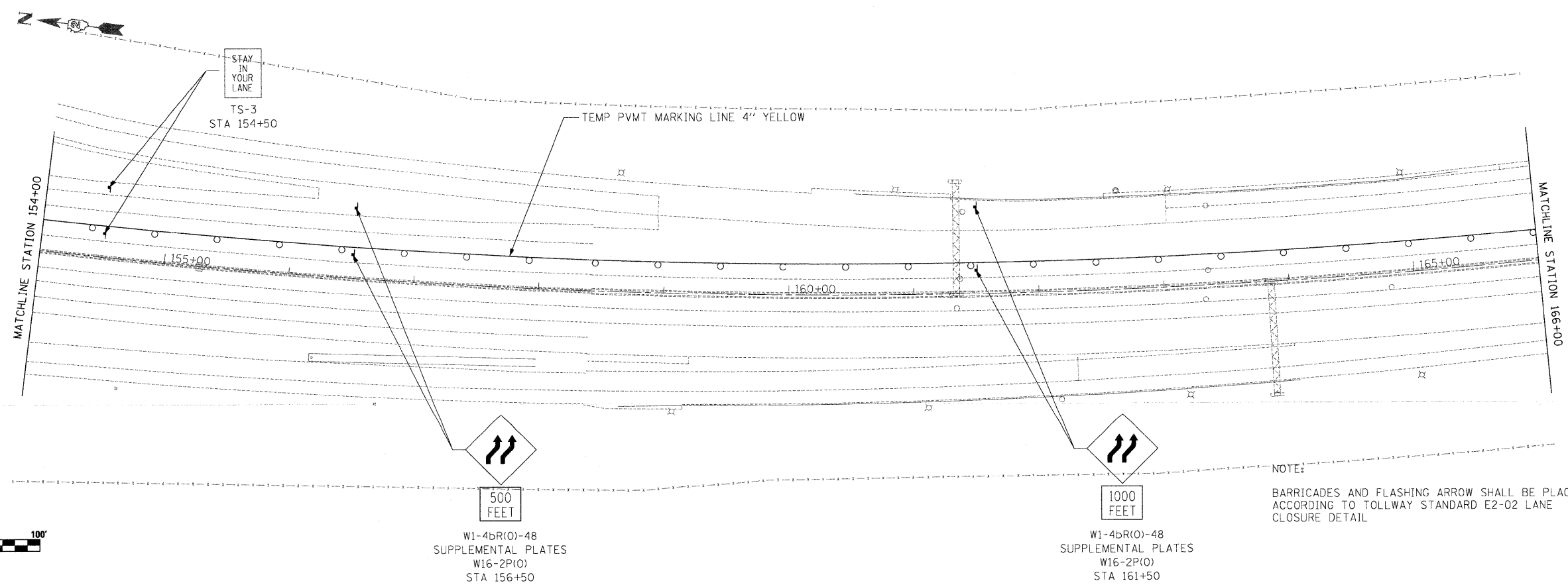
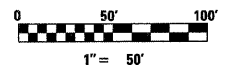


- LEGEND**
- WORK ZONE
 - TEMPORARY PAVEMENT
 - TEMPORARY CONCRETE BARRIER
 - DIRECTION OF TRAFFIC
 - DRUMS WITH BI-DIRECTIONAL STEADY BURN LIGHTS @ 50' CENTERS, 25' CENTERS ALONG TAPERS
 - IMPACT ATTENUATOR, TEMPORARY
 - VERTICAL PANEL
 - TYPE III BARRICADE WITH FLASHING LIGHTS



NOTE:
BARRICADES AND FLASHING ARROW SHALL BE PLACED ACCORDING TO TOLLWAY STANDARD E2-02 LANE CLOSURE DETAIL



W1-4bR(0)-48
SUPPLEMENTAL PLATES
W16-2P(0)
STA 156+50

W1-4bR(0)-48
SUPPLEMENTAL PLATES
W16-2P(0)
STA 161+50

	USER NAME = .USERNAME.	DESIGNED - CGC	REVISED -	STATE OF ILLINOIS DEPARTMENT OF TRANSPORTATION	MOT I-90 STAGE 2A	F.A.I. RTE. 90	SECTION (X2-1)R	COUNTY WINNEBAGO	TOTAL SHEETS 510	SHEET NO. 181
			PLOT SCALE = 50.0000' / IN. PLOT DATE = 10/19/2011			CHECKED - AM DATE - 10/14/2011	SCALE: 1"=50' SHEET NO. OF SHEETS STA. 144+00 TO STA. 154+00	CONTRACT NO. 64C29		ILLINOIS FED. AID PROJECT