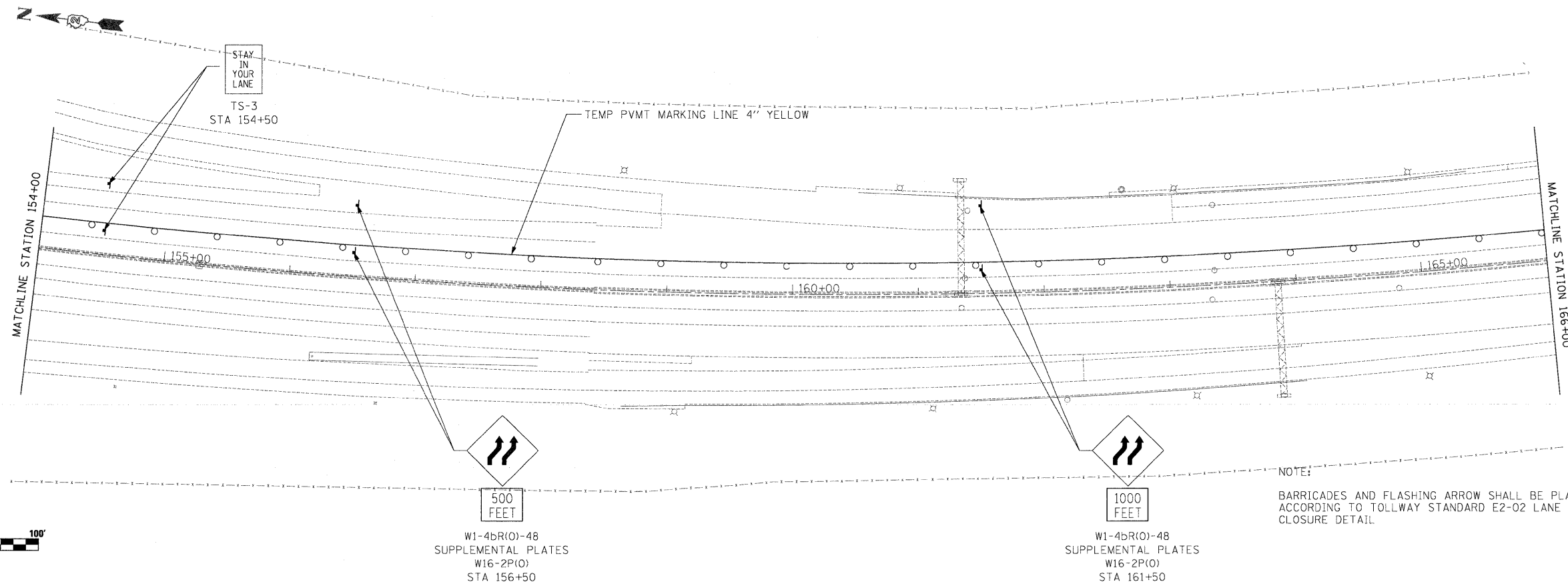
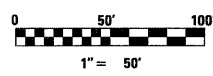


- LEGEND**
- WORK ZONE
 - TEMPORARY PAVEMENT
 - TEMPORARY CONCRETE BARRIER
 - DIRECTION OF TRAFFIC
 - DRUMS WITH BI-DIRECTIONAL STEADY BURN LIGHTS @ 50' CENTERS, 25' CENTERS ALONG TAPERS
 - IMPACT ATTENUATOR, TEMPORARY
 - VERTICAL PANEL
 - TYPE III BARRICADE WITH FLASHING LIGHTS



NOTE:
BARRICADES AND FLASHING ARROW SHALL BE PLACED ACCORDING TO TOLLWAY STANDARD E2-02 LANE CLOSURE DETAIL.



W1-4bR(O)-48
SUPPLEMENTAL PLATES
W16-2P(O)
STA 156+50

W1-4bR(O)-48
SUPPLEMENTAL PLATES
W16-2P(O)
STA 161+50



USER NAME = .USERNAME.
PLOT SCALE = 50.0000' / IN.
PLOT DATE = 10/19/2011

DESIGNED - CGC
DRAWN - CGC
CHECKED - AM
DATE - 10/14/2011

REVISED -
REVISED -
REVISED -
REVISED -

**STATE OF ILLINOIS
DEPARTMENT OF TRANSPORTATION**

MOT I-90 STAGE 2B

SCALE: 1"=50' SHEET NO. OF SHEETS STA. 144+00 TO STA. 154+00

F.A.I. RTE.	SECTION	COUNTY	TOTAL SHEETS	SHEET NO.
90	(X2-1)R	WINNEBAGO	510	195
CONTRACT NO. 64C29			ILLINOIS FED. AID PROJECT	