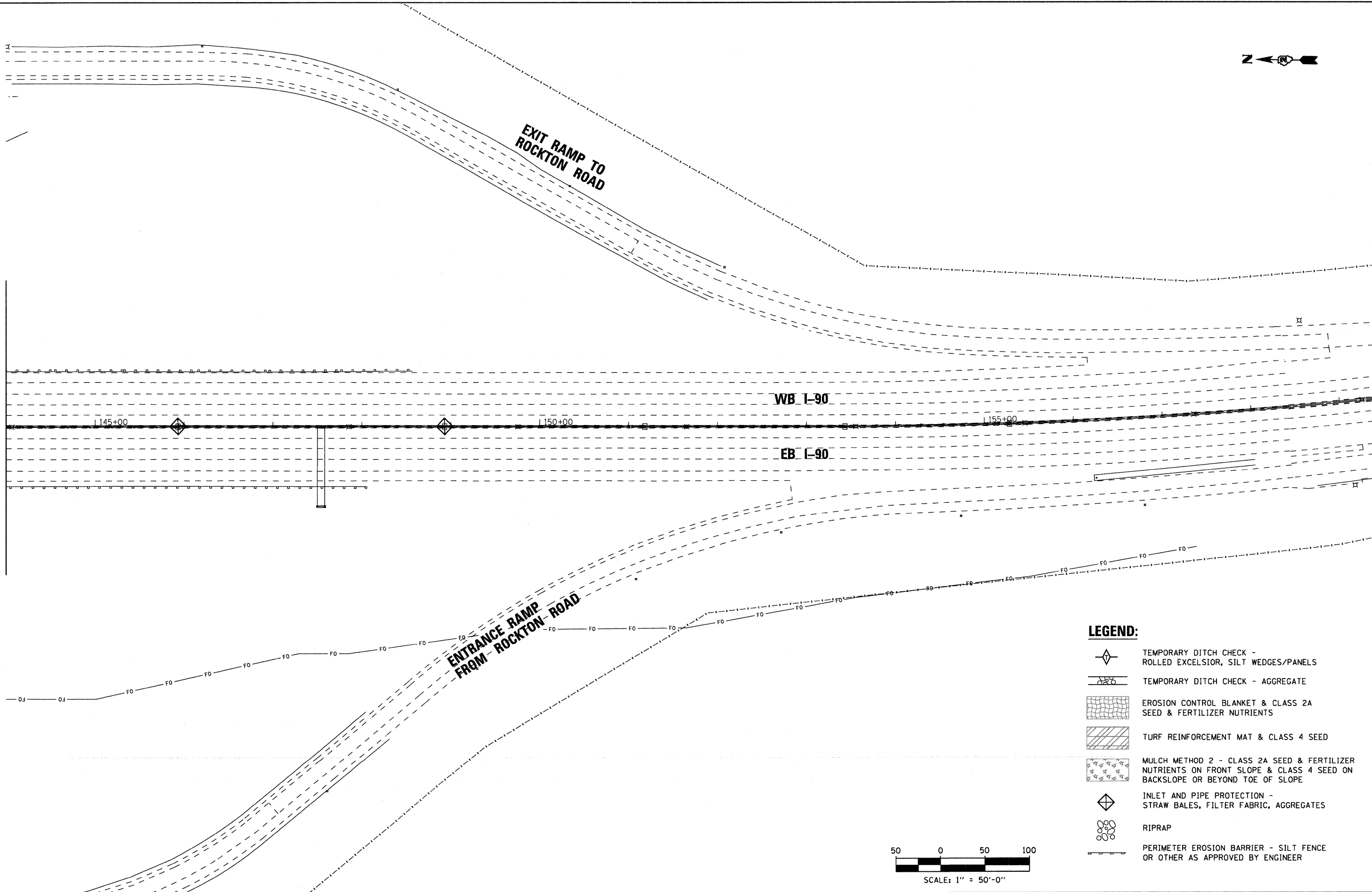
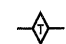
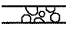
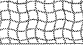





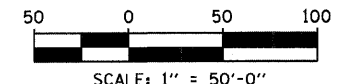




MATCHLINE I-90 STA. 144+00



- LEGEND:**
-  TEMPORARY DITCH CHECK - ROLLED EXCELSIOR, SILT WEDGES/PANELS
 -  TEMPORARY DITCH CHECK - AGGREGATE
 -  EROSION CONTROL BLANKET & CLASS 2A SEED & FERTILIZER NUTRIENTS
 -  TURF REINFORCEMENT MAT & CLASS 4 SEED
 -  MULCH METHOD 2 - CLASS 2A SEED & FERTILIZER NUTRIENTS ON FRONT SLOPE & CLASS 4 SEED ON BACKSLOPE OR BEYOND TOE OF SLOPE
 -  INLET AND PIPE PROTECTION - STRAW BALES, FILTER FABRIC, AGGREGATES
 -  RIPRAP
 -  PERIMETER EROSION BARRIER - SILT FENCE OR OTHER AS APPROVED BY ENGINEER



McClure LOCHNER
Engineering Associates, Inc.
200 LOCHNER, INC., CHICAGO, ILLINOIS

RVA
RVA ENGINEERING INC.

USER NAME = .USERNAME.	DESIGNED -	REVISED -
PLOT SCALE = 50.0000' / IN.	DRAWN - JDH	REVISED -
PLOT DATE = 10/19/2011	CHECKED - DW	REVISED -
	DATE - 10-21-2011	REVISED -

**STATE OF ILLINOIS
DEPARTMENT OF TRANSPORTATION**

**STORM WATER POLLUTION PREVENTION PLAN
I-90 FROM WISCONSIN STATE LINE TO ROCKTON ROAD**

SCALE: 1"=50'-0" SHEET NO. 12 OF 12 SHEETS STA. 144+00 TO STA. 159+39

F.A.I. RTE.	SECTION	COUNTY	TOTAL SHEETS	SHEET NO.
90	(X2-1) R	WINNEBAGO	510	230
CONTRACT NO. 64C29				
ILLINOIS FED. AID PROJECT				