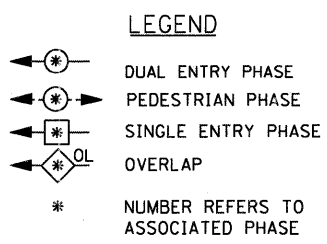
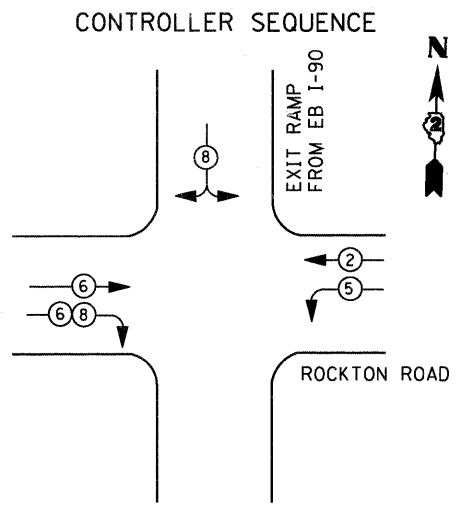
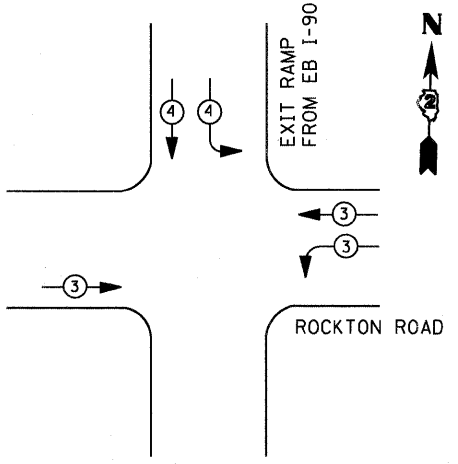


- CONTROLLER CABINET
 - UNINTERRUPTIBLE POWER SUPPLY
 - SERVICE INSTALLATION,
(P) POLE OR (G) GROUND MOUNT
 - STEEL MAST ARM ASSEMBLY AND POLE
 - STEEL COMBINATION MAST ARM
ASSEMBLY AND POLE WITH LUMINAIRE
 - SIGNAL POST
 - SIGNAL HEAD
 - SIGNAL HEAD WITH BACKPLATE
 - VIDEO DETECTION CAMERA
 - EMERGENCY VEHICLE LIGHT DETECTOR
 - CONFIRMATION BEACON
 - HANDHOLE
 - HEAVY DUTY HANDHOLE
 - DOUBLE HANDHOLE
 - GALVANIZED STEEL CONDUIT
IN TRENCH (T) OR PUSHED (P)
-
- SIGNAL FACE
 - SIGNAL FACE WITH BACKPLATE.
"P" INDICATES PROGRAMMED HEAD
-
- DENOTES NUMBER OF CONDUCTORS, ELECTRIC
CABLE NO. 14, UNLESS NOTED OTHERWISE,
ALL DETECTOR LOOP CABLE TO BE SHIELDED
 - GROUND CABLE IN CONDUIT
NO. 6 SOLID COPPER (GREEN)
 - VENDOR CABLE FOR CAMERA
 - GROUND ROD AT (C) CONTROLLER,
(H) HANDHOLE, (P) POST, (M) MAST ARM,
OR (S) SERVICE
 - LUMINAIRE, 250 WATT

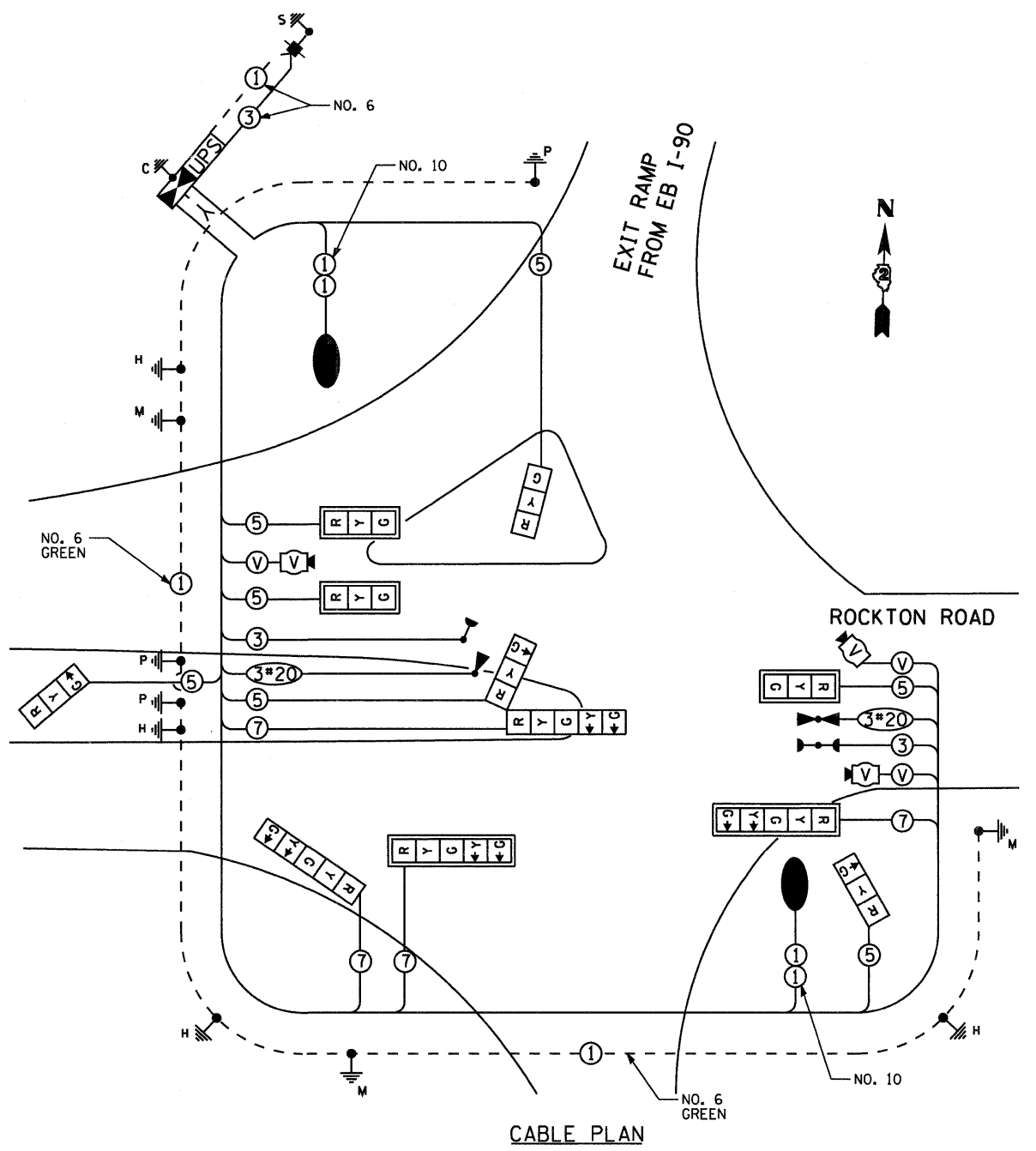
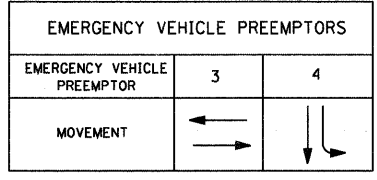


PHASE DESIGNATION DIAGRAM

REFER TO STANDARD 857001



EMERGENCY VEHICLE PREEMPTION SEQUENCE



I. D. O. T. TRAFFIC SIGNAL INSTALLATION ELECTRICAL SERVICE REQUIREMENTS					
TYPE	NO. LAMPS	WATTAGE		% OPERATIONS	TOTAL WATTAGE
		INCAND.	LED		
SIGNAL (RED)	11	135	17	0.50	93.5
(YELLOW)	11	135	25	0.25	68.75
(GREEN)	11	135	15	0.25	41.25
ARROW	8	135	12	0.10	9.6
PED. SIGNAL		90	25	1.00	--
CONTROLLER	1	100	100	1.00	100
ILLUM. SIGN		252	25	0.05	--
VIDEO SYSTEM	1	150	150	1.00	150
LUMINAIRE	2	250		1.00	500
FLASHER LED TOTAL =					958.3

ENERGY COSTS- BILLED TO: WINNEBAGO COUNTY HIGHWAY DEPARTMENT
424 NORTH SPRINGFIELD AVE.
ROCKFORD, IL 61101

ENERGY SUPPLY - CONTACT ROD MAGNUSON
PHONE 866-752-4550
COMPANY ROCK ENERGY COOPERATIVE

RESTORATION OF WORK AREA. RESTORATION OF THE TRAFFIC SIGNAL WORK AREA SHALL BE INCLUDED IN THE RELATED PAY ITEM SUCH AS FOUNDATION, CONDUIT, HANDHOLE, TRENCH AND BACKFILL, ETC., AND NO EXTRA COMPENSATION SHALL BE ALLOWED. ALL ROADWAY SURFACES SUCH AS SHOULDERS, MEDIAN, SIDEWALKS, PAVEMENT ETC. SHALL BE REPLACED IN KIND. ALL DAMAGE TO MOWED LAWNS SHALL BE REPLACED WITH AN APPROVED SOD, AND ALL DAMAGE TO UNMOWED FIELDS SHALL BE SEEDED IN ACCORDANCE WITH STANDARD SPECIFICATIONS 252 AND 250 RESPECTIVELY.