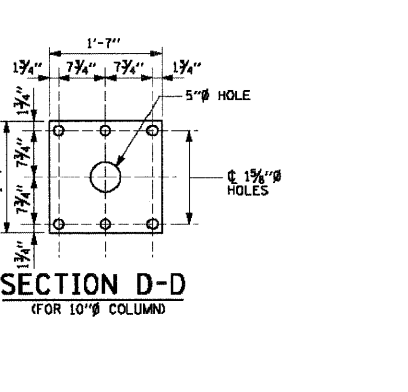
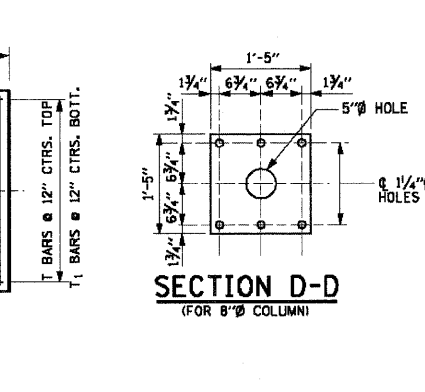
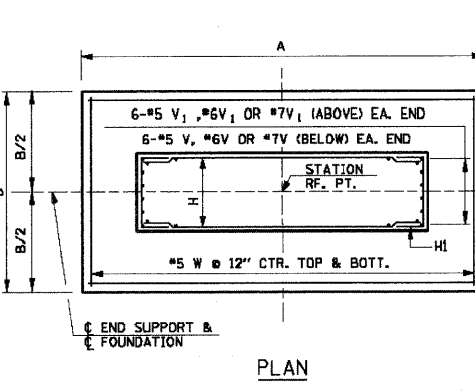
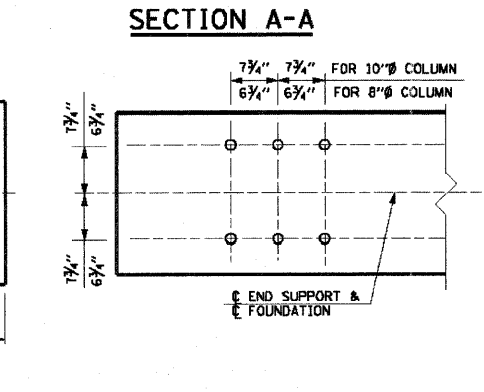
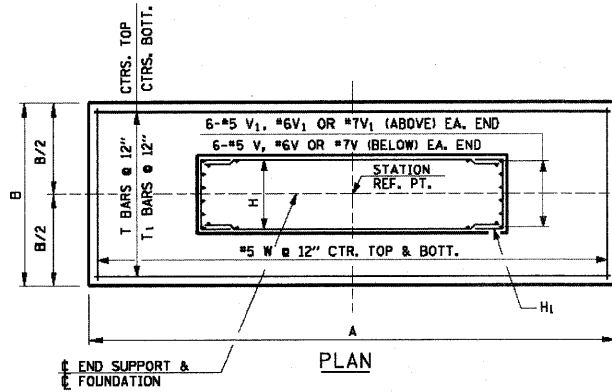
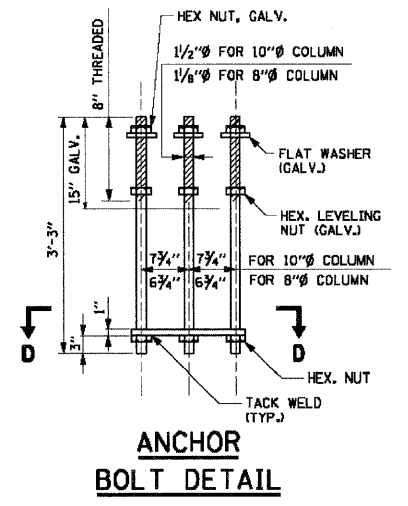
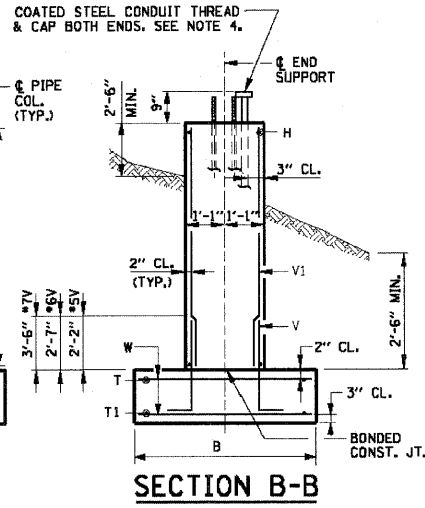
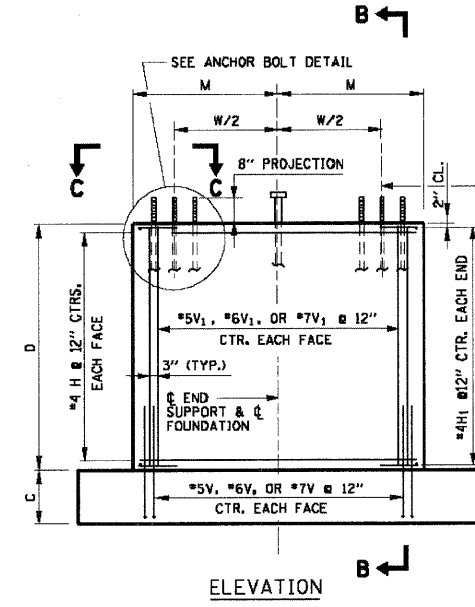
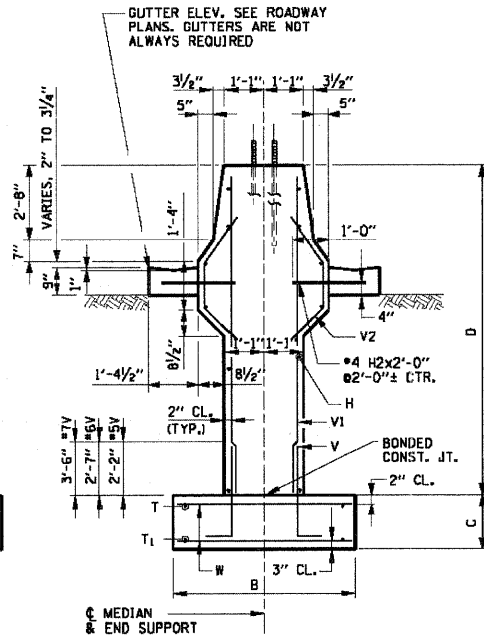
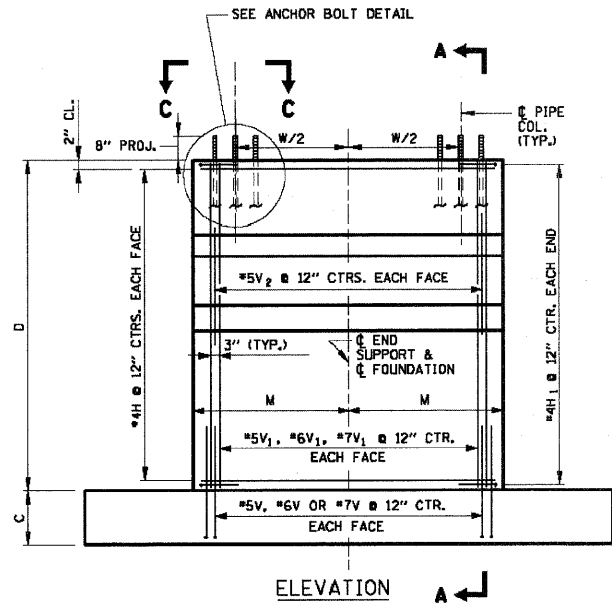


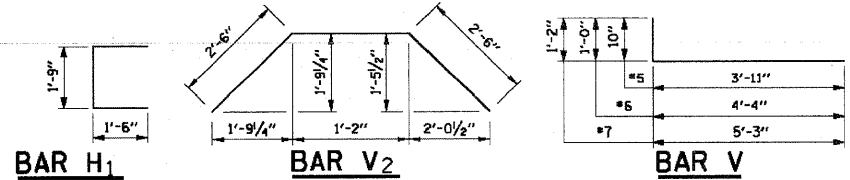
NOTE: SEE IDOT DETAIL SHEET 054-MED2 FOR DETAILS ON LEFT FOUNDATIONS AT STATIONS 126+72 RT & 147+40 RT.

SIGN LOCATION	TRUSS NO.	LEFT FOUNDATION		RIGHT FOUNDATION			
		TYPE	ELEVATION TOP	ELEVATION BOTTOM	TYPE	ELEVATION TOP	ELEVATION BOTTOM
STA: 120+90 RT	T-90	100F	789.36	780.36	100S	784.0	774.0
STA: 126+72 RT	T-105				120S	781.8	771.8
STA: 147+40 RT	T-90				100S	780.83	770.83



FOUNDATION SCHEDULE

FOUNDATION TYPE	LOCATION	DIMENSIONS					REINFORCEMENT																				CONCRETE IN CU. YDS.	REINF. BARS IN LBS.										
		A	B	C	D	M	BAR T OR T1		BAR W				BAR V				BAR V1				BAR V2				BAR H				BAR H1				BAR H2					
80F	MEDIAN	20'-0"	8'-9"	2'-0"	1'-0"	4'-0"	9	#6	#7	19'-8"	—	40	#5	8'-5"	—	28	#5	4'-9"	—	28	#5	6'-10"	—	16	#5	6'-2"	—	14	#4	7'-8"	—	14	#4	4'-9"	—	10	18.6	1550
80S	OUTSIDE	20'-0"	8'-9"	2'-0"	8'-0"	4'-0"	9	#6	#7	19'-8"	—	40	#5	8'-5"	—	28	#5	4'-9"	—	28	#5	7'-10"	—	16	#4	7'-8"	—	16	#4	4'-9"	—	16	#4	4'-9"	—	18.1	1480	
100F	MEDIAN	22'-0"	10'-0"	2'-0"	1'-0"	5'-3"	10	#6	#7	21'-8"	—	44	#5	9'-8"	—	34	#5	5'-4"	—	34	#6	6'-10"	—	22	#5	6'-2"	—	14	#4	10'-2"	—	14	#4	4'-9"	—	12	23.7	2130
100S	OUTSIDE	22'-0"	10'-0"	2'-0"	8'-0"	5'-3"	10	#6	#7	21'-8"	—	44	#5	9'-8"	—	34	#6	5'-4"	—	34	#6	7'-10"	—	16	#4	10'-2"	—	16	#4	4'-9"	—	16	#4	4'-9"	—	23.1	2050	
120F	MEDIAN	24'-0"	10'-0"	2'-0"	1'-0"	6'-0"	10	#7	#8	23'-8"	—	48	#5	9'-8"	—	36	#7	6'-5"	—	36	#7	6'-10"	—	24	#5	6'-2"	—	14	#4	11'-8"	—	14	#4	4'-9"	—	14	26.2	2910
120S	OUTSIDE	24'-0"	10'-0"	2'-0"	8'-0"	6'-0"	10	#7	#8	23'-8"	—	48	#5	9'-8"	—	36	#7	6'-5"	—	36	#7	7'-10"	—	16	#4	11'-8"	—	16	#4	4'-9"	—	16	#4	4'-9"	—	25.5	2830	



- NOTES:
- MINIMUM ALLOWABLE SOIL BEARING PRESSURE NOT TO BE LESS THAN 3000 P.S.F.
 - ALL MATERIAL, FABRICATION AND CONSTRUCTION REQUIREMENTS SHALL BE IN ACCORDANCE WITH SECTION 734 OF THE IDOT STANDARD SPECIFICATIONS.
 - ALL REBARS SHALL BE EPOXY COATED.
 - FOR SIZE AND NUMBER OF COATED STEEL CONDUITS, SEE CONSTRUCTION ELECTRICAL DRAWINGS.

APPROVED: *Jeff Daly*
 CHIEF ENGINEER
 DATE: 1-1-2007

DATE	REVISIONS

Illinois Tollway
 Open Roads for a Faster Future

OVERHEAD SIGN STRUCTURE
 SPAN TYPE, "F" BARRIER FOUNDATION
 STANDARD F3-00