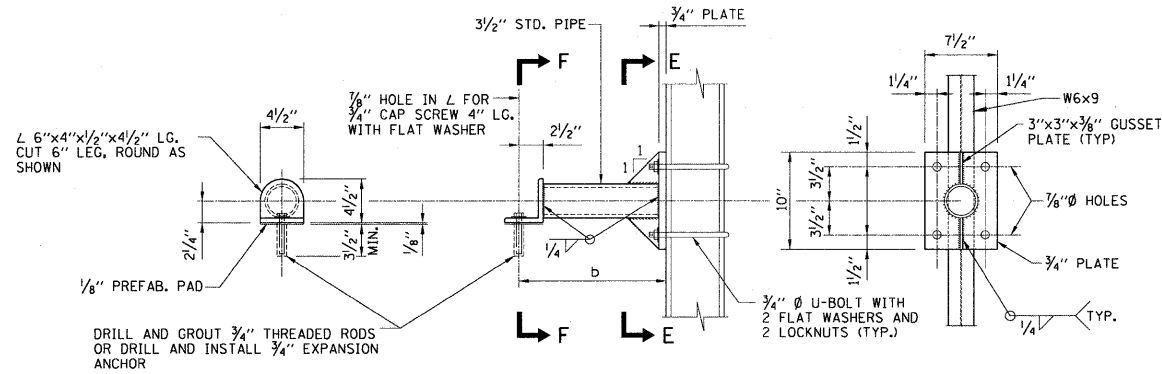


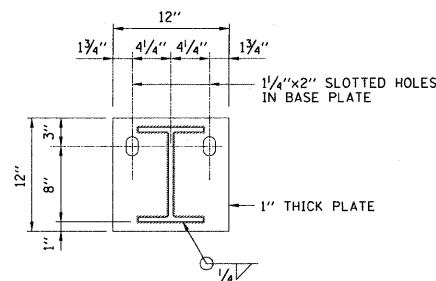
SECTION A-A



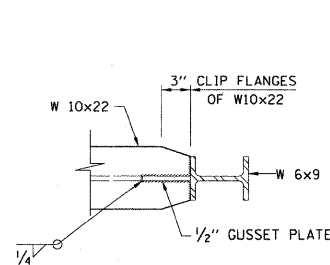
SECTION F-F

DETAIL Z

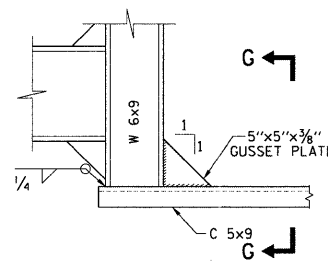
SECTION E-E



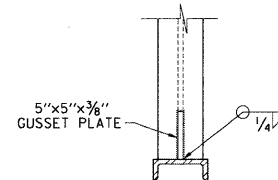
SECTION C-C



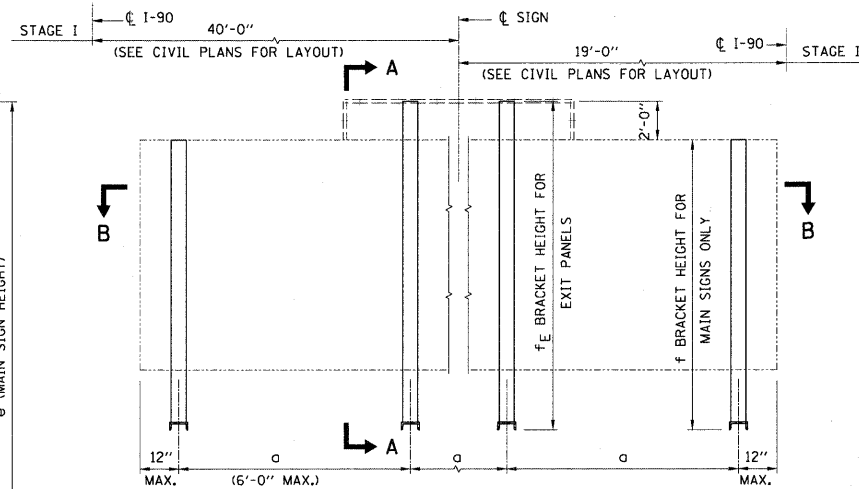
SECTION D-D



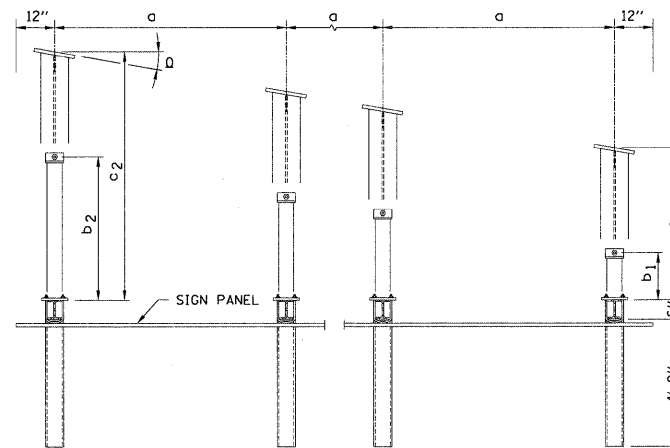
DETAIL Y



SECTION G-G



TYPICAL FRONT ELEVATION
(LOOKING SOUTH)



SECTION B-B

SIGN NO.	ROUTE	STATION	BRIDGE NAME	NO. BR'K'TS	NO. BR'K'TS	a	b ₁	b ₂	c ₁	c ₂	d	e	f	f _e	g	MAIN SIGN SIZE	EXIT PANEL WIDTH
	I-90	142+60***	ROCKTON ROAD	6	0	5'-0"±	1'-8"***	1'-8"***	4'-9"	4'-9"	9"	10'-0"	11'-6"***	N/A	2'-4"	10' X 27'	N/A

- BRACKET SPACING MUST BE DETERMINED PER CRITERIA INDICATED IN NOTES 12, 13 AND 14. MAXIMUM BRACKET SPACING IS 6'-0".
- DIMENSIONS AS INDICATED SATISFY THE SPECIFIED MINIMUM REQUIREMENT AND INCLUDE LIMITED AMOUNT OF CONSTRUCTION TOLERANCE.
- SIGN PANEL TO BE RELOCATED FROM EXISTING SIGN TRUSS AT STA. 147+54.

NOTES:

- ALL STRUCTURE STEEL SHAPES AND PLATES SHALL CONFORM TO THE REQUIREMENTS OF AASHTO M-270 GRADE 36.
- ALL STRUCTURAL STEEL PIPE SHALL BE ASTM A53 GRADE B OR C WITH A MINIMUM YIELD OF 46,000 PSI. IF A500 PIPE IS SUBSTITUTED FOR A53 THEN THE OUTSIDE DIAMETER SHALL BE AS DETAILED AND THE WALL THICKNESS GREATER THAN OR EQUAL TO A53.
- ALL CAP SCREWS, BOLTS, U-BOLTS, WASHERS AND LOCKNUTS SHALL BE IN ACCORDANCE WITH SUBSECTION 733.02 OF THE IDOT STANDARD SPECIFICATIONS AND SHALL BE GALVANIZED IN ACCORDANCE WITH AASHTO M-232.
- ALL WELDS TO BE CONTINUOUS UNLESS OTHERWISE SHOWN. ALL WELDING TO BE DONE IN ACCORDANCE WITH THE CURRENT AWS D1.1 STRUCTURAL WELDING CODE (STEEL) AND THE IDOT STANDARD SPECIFICATIONS.
- ALL FABRICATION SHALL BE COMPLETE AND READY FOR ASSEMBLY BEFORE GALVANIZING. NO PUNCHING, DRILLING, CUTTING, NOR WELDING SHALL BE PERMITTED AFTER GALVANIZING.
- ALL STRUCTURAL STEEL PLATES AND SHAPES SHALL BE HOT-DIPPED GALVANIZED IN ACCORDANCE WITH AASHTO M111.
- CONTRACTOR SHALL FIELD CHECK ALL BRIDGE DIMENSIONS SHOWN ON PLANS BEFORE SUBMITTING SHOP DRAWINGS.
- THE COST OF FURNISHING AND INSTALLING THE BEARING PADS AS HEREIN SPECIFIED SHALL BE INCLUDED WITH THE COST OF BRIDGE (CONCRETE) MOUNTED SIGN SUPPORT.
- PRE-FAB BEARING PADS: FABRIC BEARING PADS SHALL CONSIST OF A FABRIC AND RUBBER BODY MADE WITH NEW, UNVULCANIZED RUBBER AND UNUSED FABRIC FIBERS.
- METHOD OF MEASUREMENT SHALL BE IN ACCORDANCE WITH SUBSECTION 733.10 (b) OF THE IDOT STANDARD SPECIFICATIONS. THIS WORK WILL BE PAID FOR AT THE CONTRACT UNIT PRICE PER LINEAR FOOT OF BRIDGE (CONCRETE) MOUNTED SIGN SUPPORT.
- SIGN STRUCTURE WIRING SHALL BE IN ACCORDANCE WITH THE SUPPLEMENTAL SPECIFICATIONS.
- CENTER LINE OF EXPANSION ANCHOR INTO PARAPET SHALL BE AT LEAST 12" TO CENTERLINE OF OPEN/EXP. JOINT IN PARAPET. CONTRACTOR SHALL VERIFY THE MINIMUM DISTANCES BETWEEN EXPANSION ANCHORS & PARAPET OPEN/EXP. JOINT PRIOR TO ERECTION OF SIGN SUPPORT.
- BRACKET SPACING MUST BE COORDINATED WITH RAILING SPACING AND THE CONTRACTOR MUST TEMPORARILY REMOVE SECTIONS OF RAILING TO FACILITATE UPPER BRACKET INSTALLATION. RAILING MUST BE RESTORED TO ORIGINAL CONDITION AFTER UPPER BRACKET IS INSTALLED. IF IT IS DETERMINED THAT EXISTING RAILING CAN NOT BE REMOVED, THE EXPANSION ANCHOR SHALL BE INSTALLED PER MIN. EDGE DISTANCE REQUIREMENT AS SHOWN IN SECTION A-A.
- NON-DESTRUCTIVE PACHOMETER TESTING MUST BE PERFORMED TO LOCATE PRESTRESSING STRAND AND PRIMARY TENSION AND SHEAR REINFORCEMENT IN EXISTING EXTERIOR PPC GIRDER PRIOR TO FIELD DRILLING OF EXISTING PPC GIRDER. SPACE HOLES TO MISS STRAND AND PRIMARY REINFORCEMENT BY 2" MIN. MINIMIZE SPALLING DURING FIELD DRILLING OF EXISTING PPC GIRDER.
- V.I.F. DENOTES VERIFY IN FIELD.



DATE	REVISIONS
6-1-2009	CHANGED ANGLE SIZE FOR DETAIL "Z"

BRIDGE (CONCRETE) MOUNTED SIGN SUPPORT	
DATE	1-1-2007



USER NAME =	USERNAME	DESIGNED -	RH	REVISED -	
PLOT SCALE =	1/2 1/16 "/td> <td>DRAWN -</td> <td>RH</td> <td>REVISED -</td> <td></td>	DRAWN -	RH	REVISED -	
PLOT DATE =	10/19/2011	CHECKED -	CMM	REVISED -	
		DATE -	10/14/2011	REVISED -	

STATE OF ILLINOIS
DEPARTMENT OF TRANSPORTATION

BRIDGE (CONCRETE) MOUNTED
SIGN SUPPORT

SCALE: NTS SHEET NO. OF SHEETS STA. TO STA.

F.A.I. RTE.	SECTION	COUNTY	TOTAL SHEETS	SHEET NO.
90	(X2-1)R	WINNEBAGO	510	345
CONTRACT NO. 64C29				
[ILLINOIS] FED. AID PROJECT				