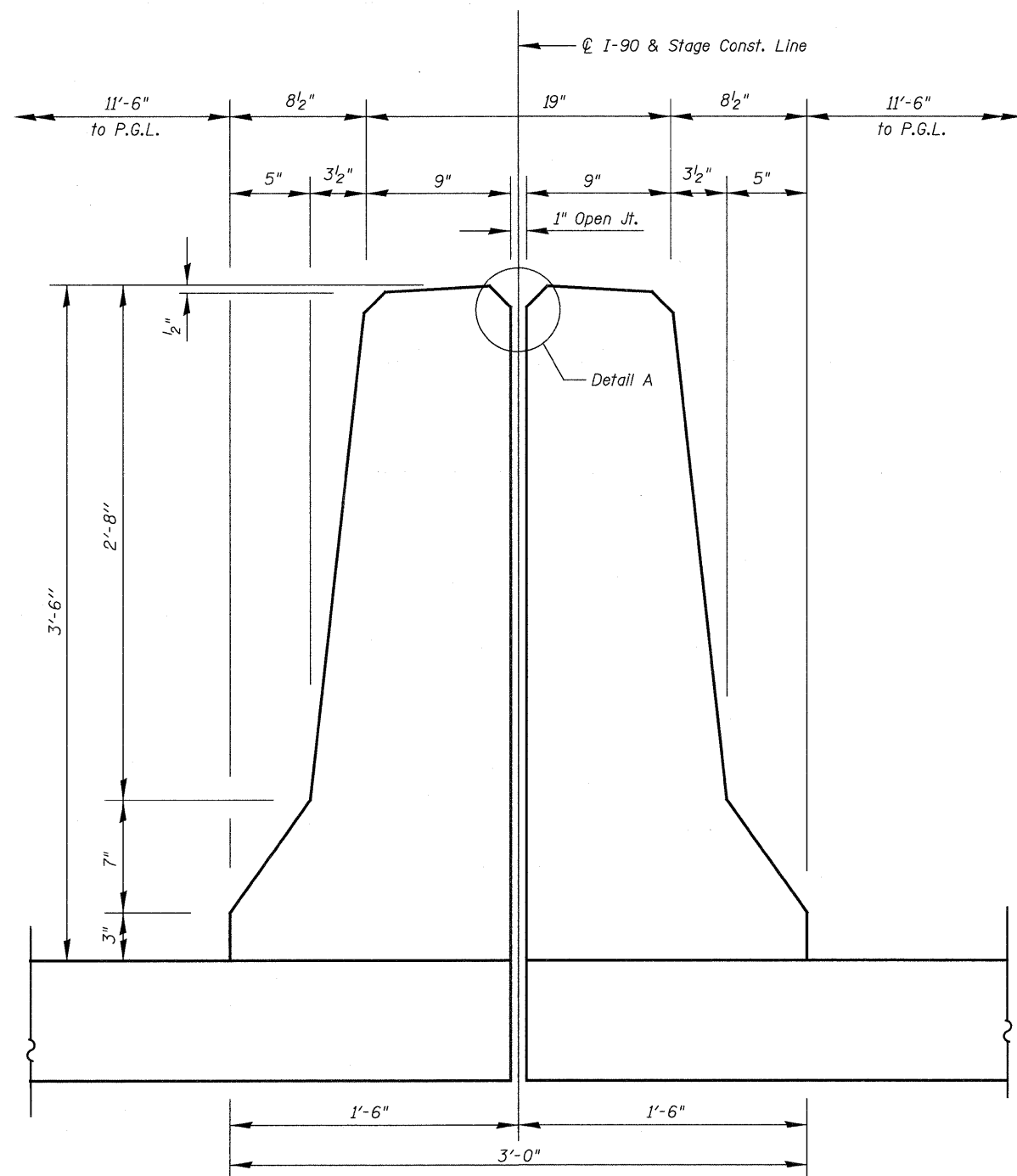


**DETAIL A**

\* COST INCLUDED IN CONCRETE SUPERSTRUCTURE



**PROPOSED MEDIAN PARAPET  
TO MATCH HWY STD. 637006-02**

USER NAME =	DESIGNED - JTT	REVISD -
	CHECKED - VAC	REVISD -
PLOT SCALE =	DRAWN - JBB	REVISD -
PLOT DATE =	CHECKED - JTT	REVISD -

F.A.I. RTE.	SECTION	COUNTY	TOTAL SHEETS	SHEET NO.
90	(X2-1)R	WINNEBAGO	510	363
				CONTRACT NO. 64C29
ILLINOIS FED. AID PROJECT				