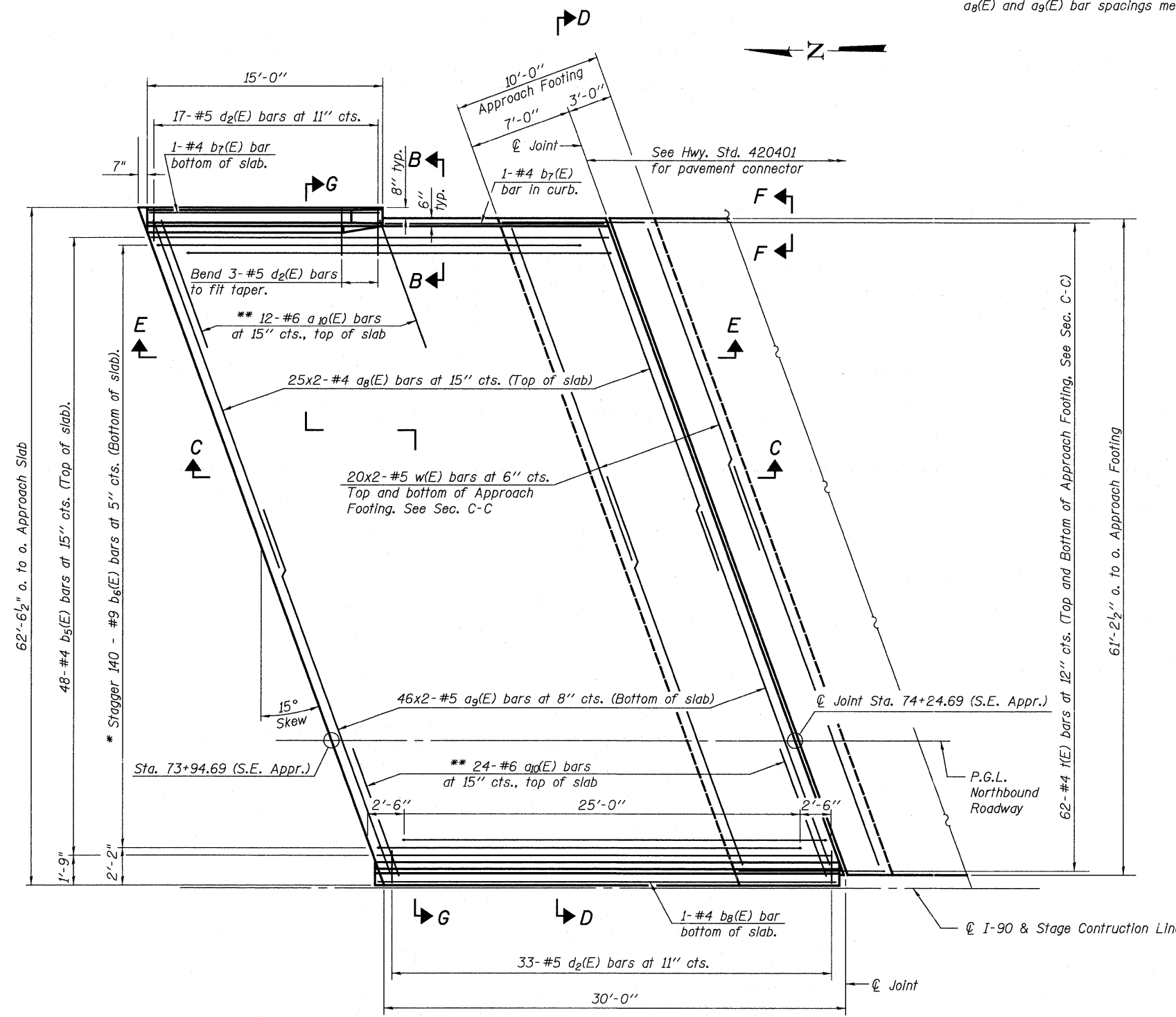
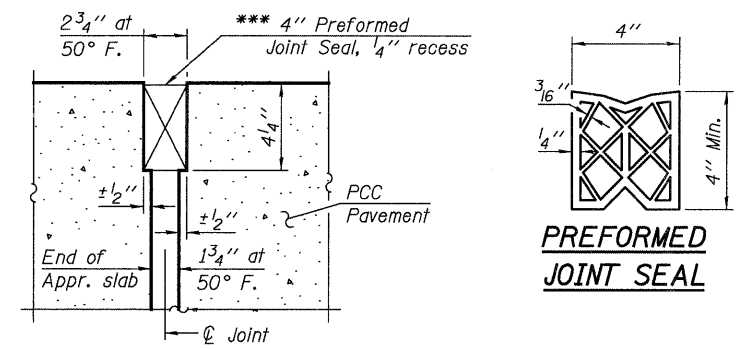


Notes:  
See sheet 22 of 48 for Sections C-C, D-D and G-G.  
a<sub>8</sub>(E) and a<sub>9</sub>(E) bar spacings measured along  $\phi$  Rdwy.



**PLAN**

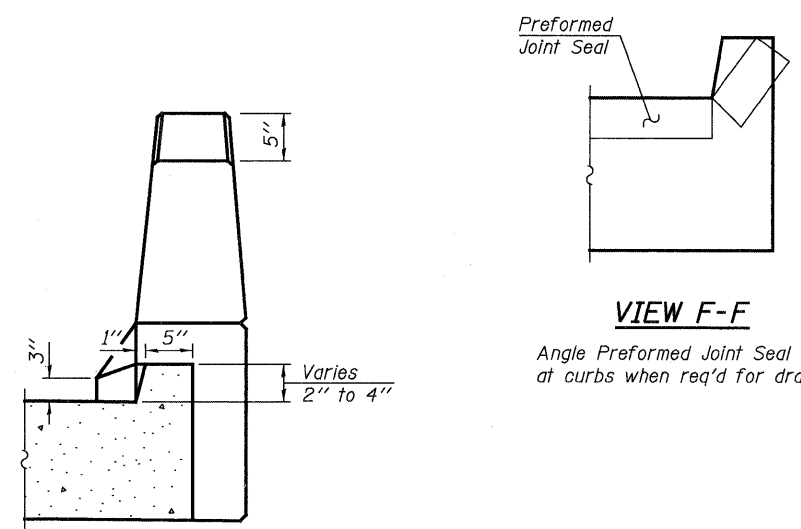
\* Tilt #9 b<sub>6</sub>(E) bars as required to maintain clearance.  
\*\* Space between a<sub>8</sub>(E) bars, typ. each parapet.



**RIGID PAVEMENT**

**DETAIL A**

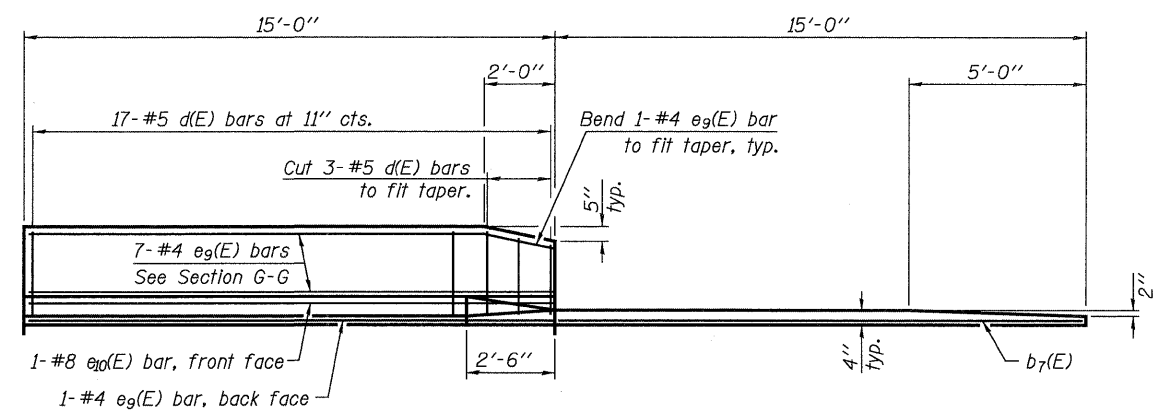
\*\*\* Cost included with Concrete Superstructure.



**VIEW F-F**

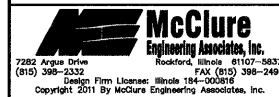
Angle Preformed Joint Seal at 45° at curbs when req'd for drainage.

**VIEW B-B**



**VIEW E-E**

(Sheet 1 of 2)



USER NAME =	DESIGNED - JTT	REVISED -
PLOT SCALE =	CHECKED - VAC	REVISED -
PLOT DATE =	DRAWN - JBB	REVISED -
	CHECKED - JTT	REVISED -

**STATE OF ILLINOIS  
DEPARTMENT OF TRANSPORTATION**

**BRIDGE APPROACH SLAB DETAILS S.E.  
STRUCTURE NO. 101-0194**

BRIDGE SHEET NO. 21 OF 48 SHEETS

F.A.I. RTE. 90	SECTION (X2-1)R	COUNTY WINNEBAGO	TOTAL SHEETS 510	SHEET NO. 366
				CONTRACT NO. 64C29
ILLINOIS FED. AID PROJECT				