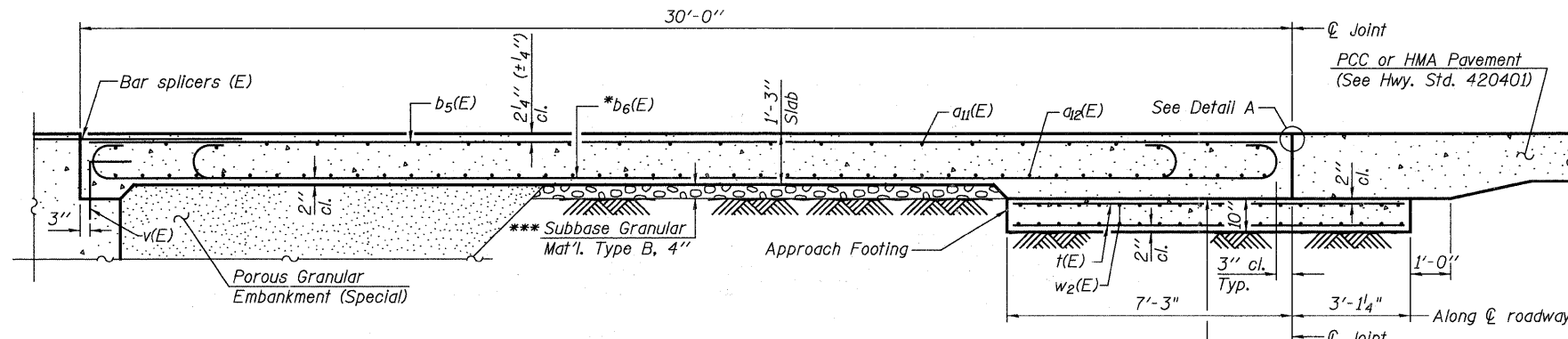


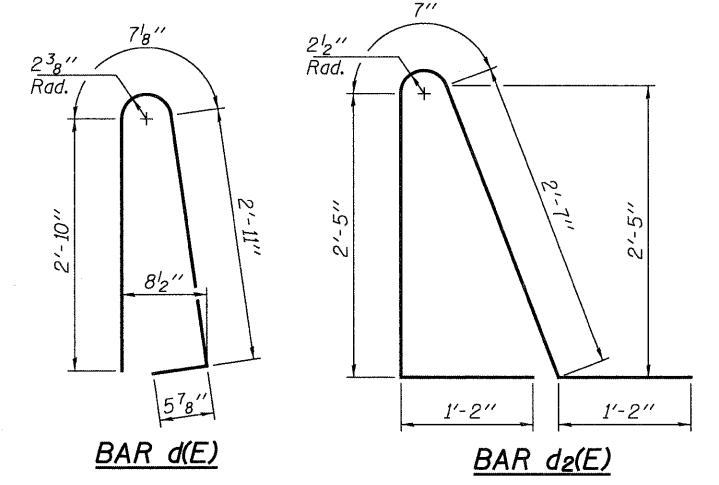
Notes:
 See sheet 23 of 48 for Detail A and View B-B.
 Approach slab and parapet concrete shall be paid for as Concrete Superstructure.
 Approach footing concrete shall be paid for as Concrete Structures.
 Reinforcement shall be paid for as Reinforcement Bars, Epoxy Coated.
 For v(E) bar details, see sheet 28 of 48.
 The approach footing maximum applied service bearing pressure (Q_{max}) = 2.0 ksf.
 For bar splicer details, see sheet 42 of 48.
 Cost of excavation for approach footing included with Concrete Structures.
 For Porous Granular Embankment (Special) and drainage treatment details, see sheet 2 of 48.
 For additional parapet details, see sheet 17 of 48.



SECTION C-C

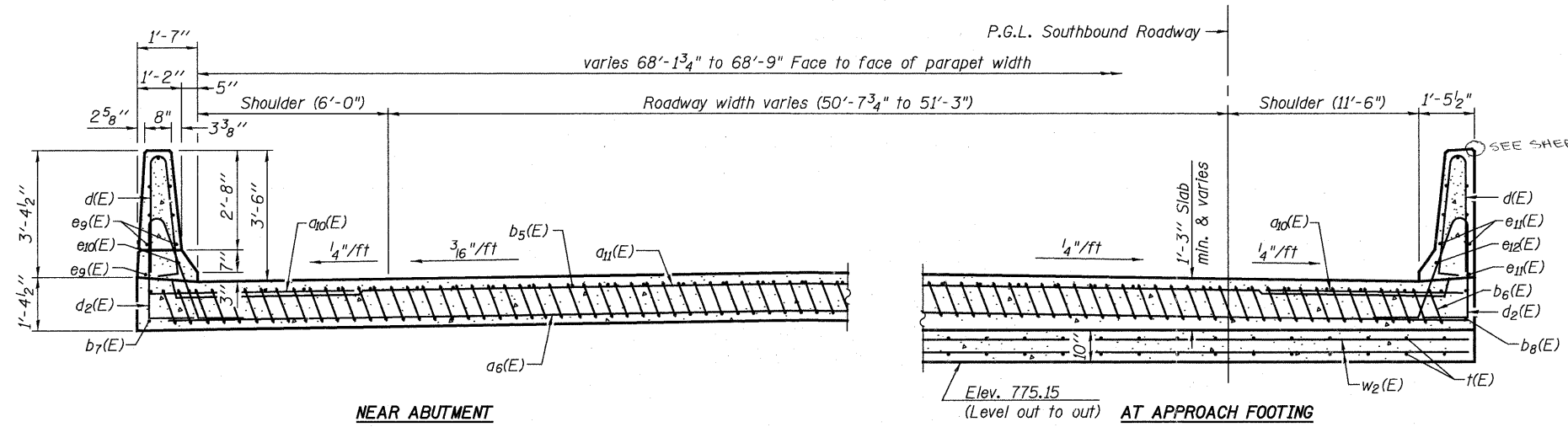
* Tilt #9 $b_1(E)$ bars as required to maintain clearance.
 *** Cost included with Concrete Superstructure.

*** 10 mil. Polyethylene bond breaker on steel trowel finish



BAR d(E)

BAR d2(E)

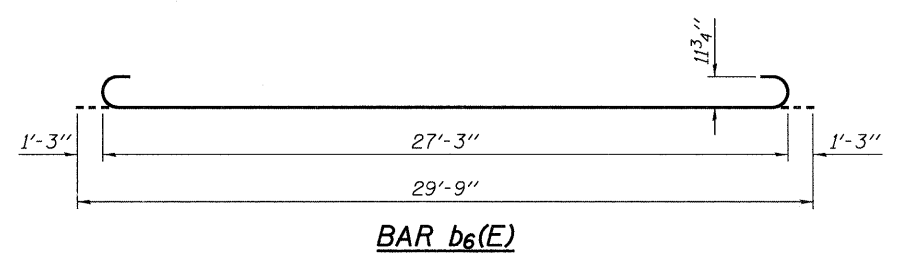


NEAR ABUTMENT

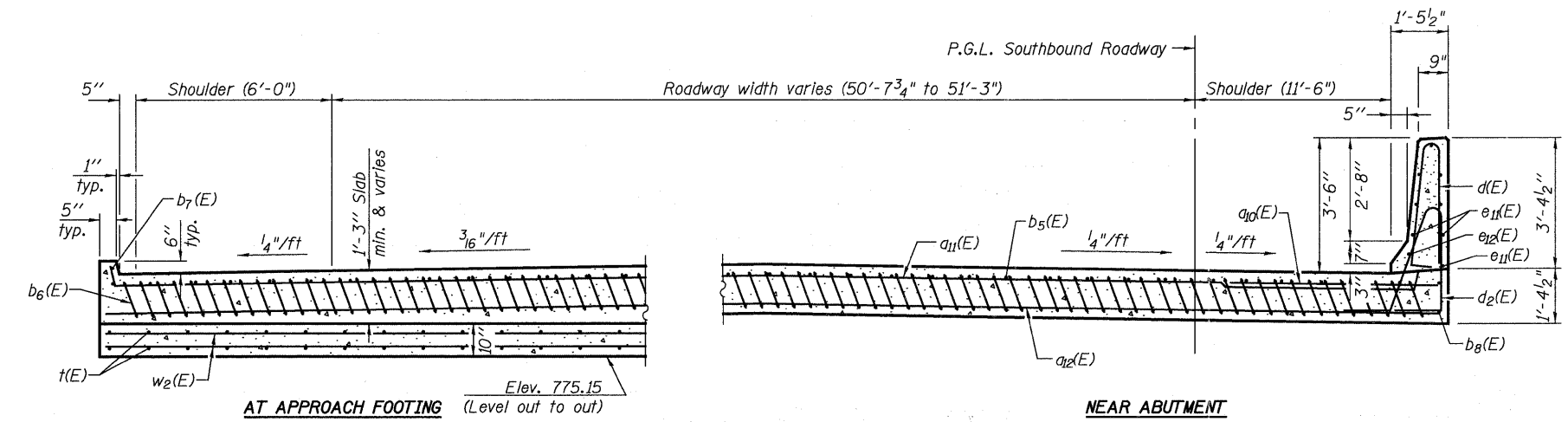
SECTION G-G

(See Plan for dimensions not shown)

AT APPROACH FOOTING



BAR b6(E)

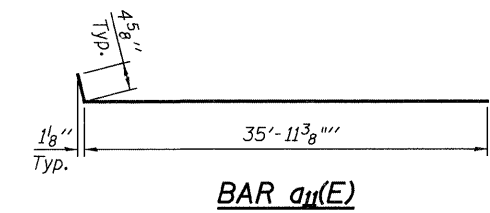


AT APPROACH FOOTING

SECTION D-D

(See Plan for dimensions not shown)

NEAR ABUTMENT



BAR a11(E)

LAP LENGTH

#4 bars = 2'-1"
 #5 bars = 2'-7"

BILL OF MATERIAL

Bar	No.	Size	Length	Shape
$a_{10}(E)$	36	#6	6'-6"	—
$a_{11}(E)$	50	#4	38'-8"	—
$a_{12}(E)$	92	#5	38'-4"	—
$b_5(E)$	56	#4	29'-8"	—
$b_6(E)$	164	#9	29'-9"	—
$b_7(E)$	2	#4	14'-8"	—
$b_8(E)$	1	#4	29'-8"	—
$d(E)$	50	#5	6'-10"	U
$d_2(E)$	50	#5	7'-11"	U
$e_9(E)$	8	#4	14'-8"	—
$e_{10}(E)$	1	#8	14'-8"	—
$e_{11}(E)$	8	#4	29'-8"	—
$e_{12}(E)$	1	#8	29'-8"	—
$t(E)$	144	#4	10'-0"	—
$w_2(E)$	80	#5	37'-11"	—
Concrete Superstructure			Cu. Yd.	113.0
Concrete Structures			Cu. Yd.	21.9
Reinforcement Bars, Epoxy Coated			Pound	28,309

(Sheet 2 of 2)



USER NAME =
 DESIGNED - JTT
 CHECKED - VAC
 DRAWN - JBB
 PLOT SCALE =
 PLOT DATE =

DESIGNED - JTT
 CHECKED - VAC
 DRAWN - JBB
 PLOT DATE =

REVISED -
 REVISED -
 REVISED -
 REVISED -

**STATE OF ILLINOIS
 DEPARTMENT OF TRANSPORTATION**

**BRIDGE APPROACH SLAB DETAILS N.W.
 STRUCTURE NO. 101-0193**
 BRIDGE SHEET NO. 24 OF 48 SHEETS

F.A.I. RTE.	SECTION	COUNTY	TOTAL SHEETS	SHEET NO.
90	(X2-1)R	WINNEBAGO	510	369
				CONTRACT NO. 64C29
[ILLINOIS] FED. AID PROJECT				