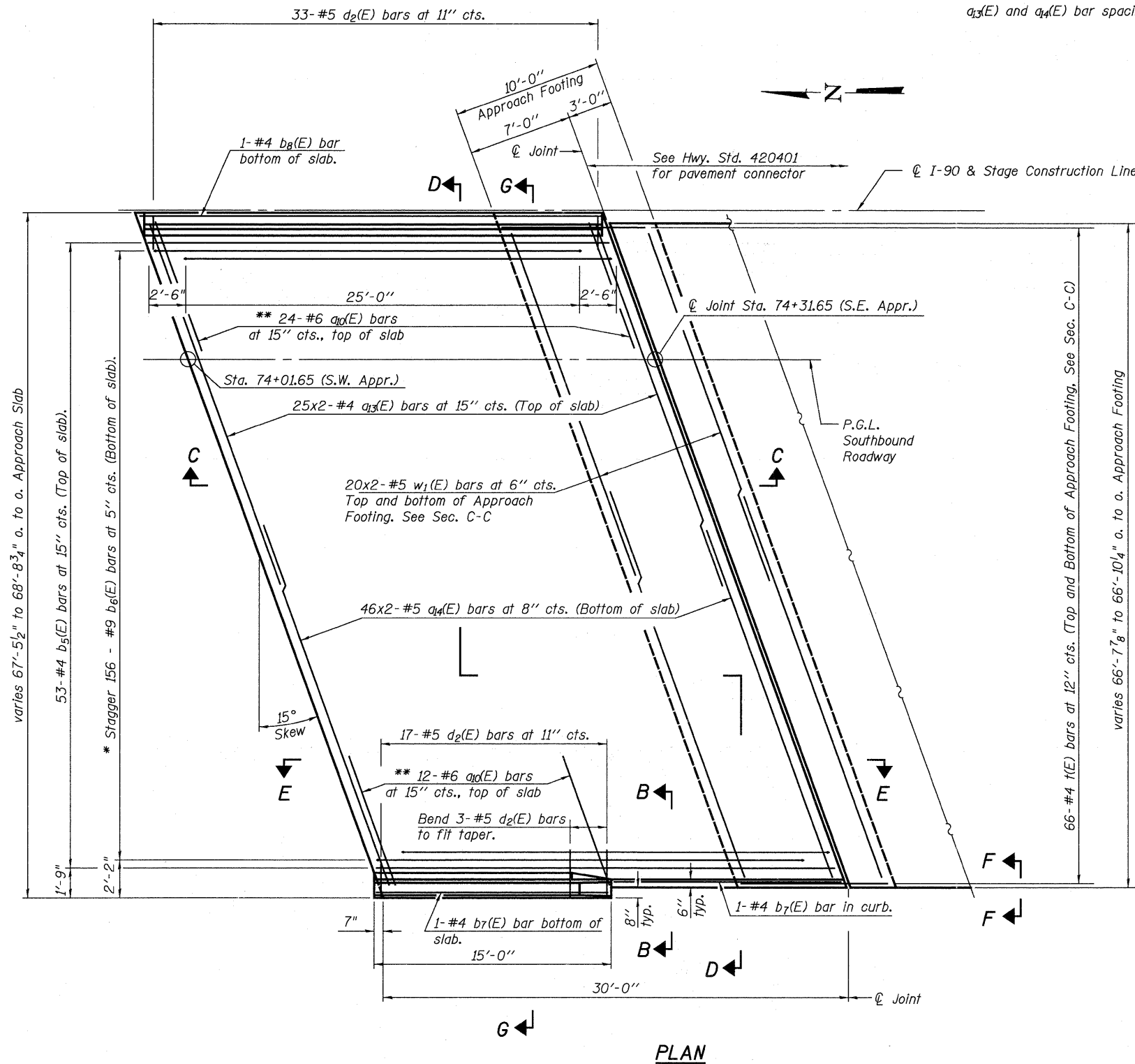
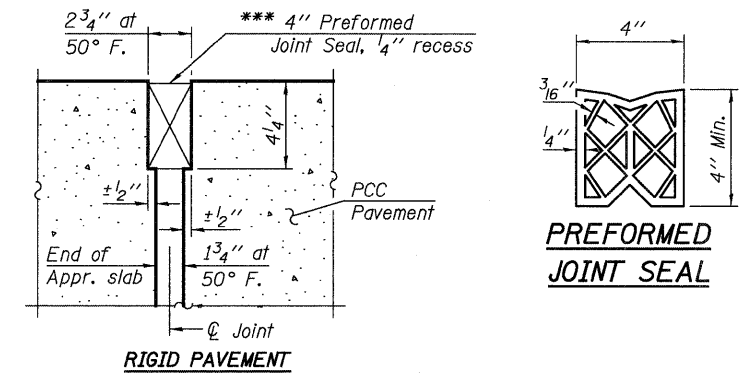


Notes:
See sheet 26 of 48 for Sections C-C, D-D and G-G.
 $a_{3(E)}$ and $a_{4(E)}$ bar spacings measured along ϕ Rdwy.

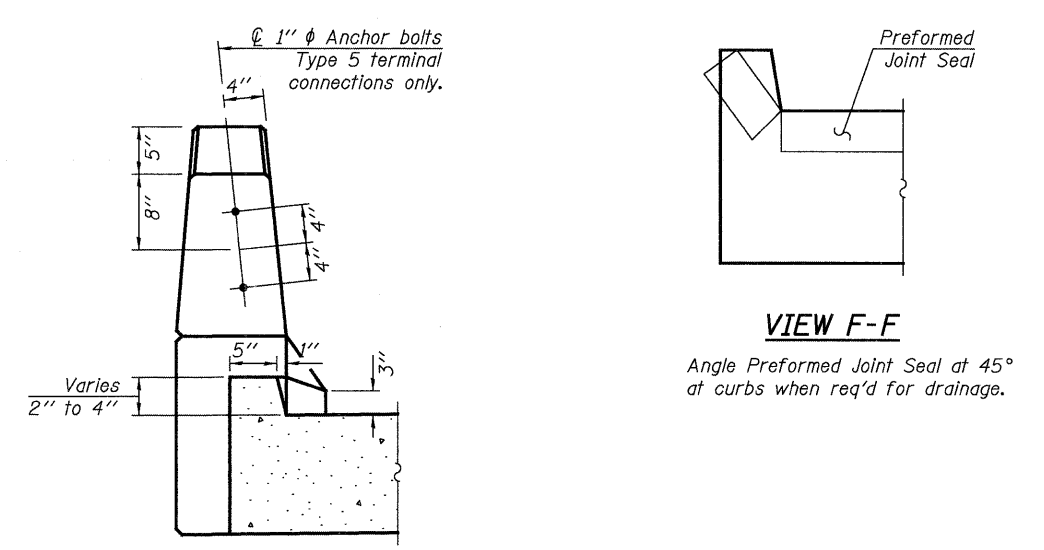


* Tilt #9 $b_6(E)$ bars as required to maintain clearance.
** Space between $a_{13(E)}$ bars, typ. each parapet.



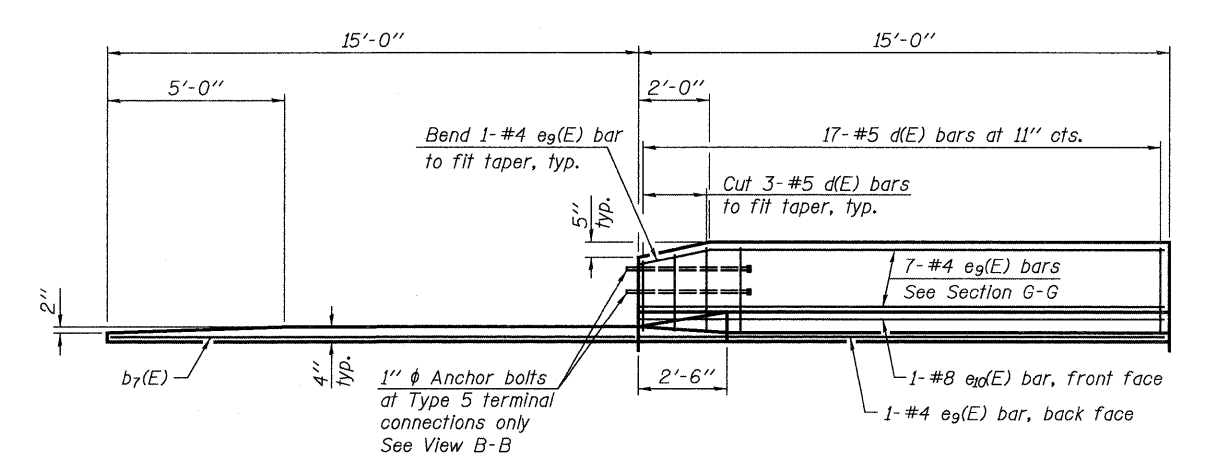
DETAIL A

*** Cost included with Concrete Superstructure.



VIEW B-B

VIEW F-F
Angle Preformed Joint Seal at 45° at curbs when req'd for drainage.



VIEW E-E

(Sheet 1 of 2)



USER NAME =	DESIGNED - JTT	REVISED -
PLOT SCALE =	CHECKED - VAC	REVISED -
PLOT DATE =	DRAWN - JBB	REVISED -
	CHECKED - JTT	REVISED -

STATE OF ILLINOIS
DEPARTMENT OF TRANSPORTATION

BRIDGE APPROACH SLAB DETAILS S.W.
STRUCTURE NO. 101-0193

BRIDGE SHEET NO. 25 OF 48 SHEETS

F.A.I. RTE. 90	SECTION (X2-1)R	COUNTY WINNEBAGO	TOTAL SHEETS 510	SHEET NO. 370
CONTRACT NO. 64C29			ILLINOIS FED. AID PROJECT	