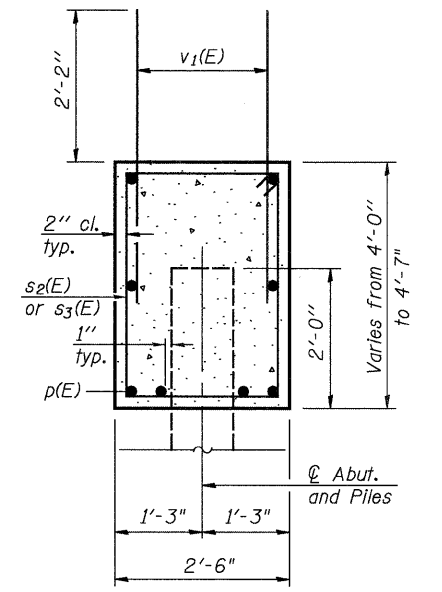


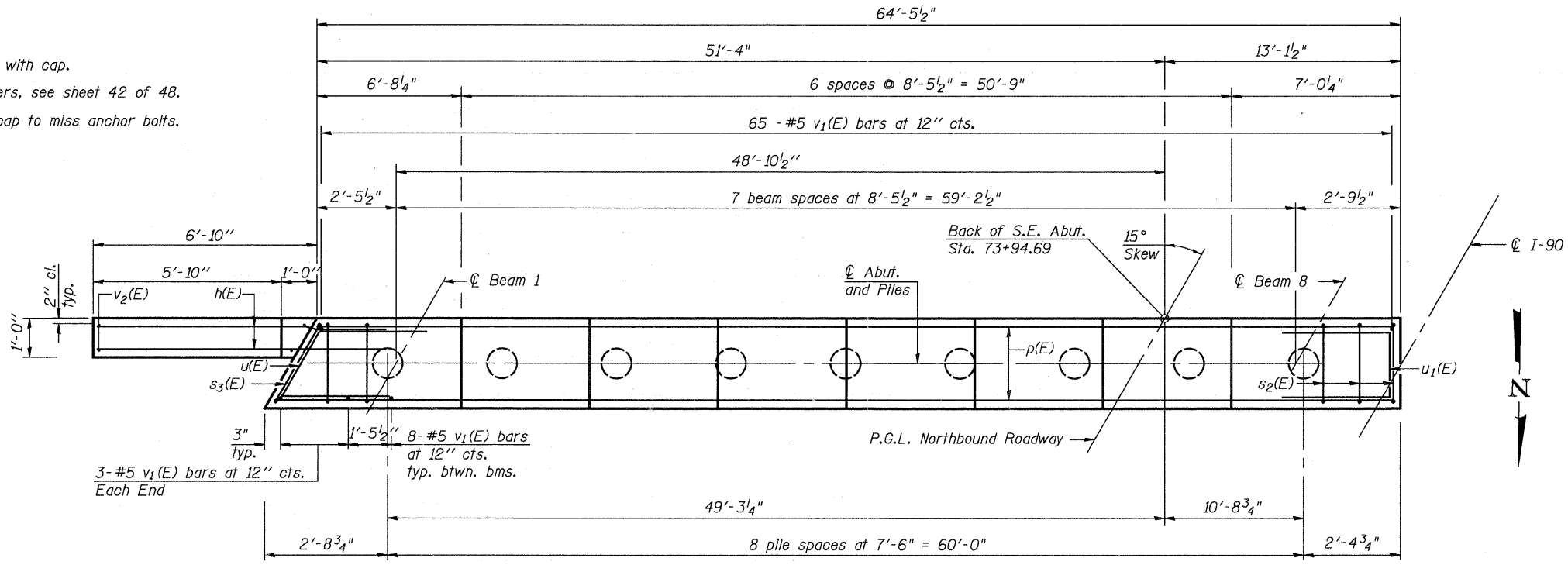
ELEVATION
(Looking South)

MINIMUM BAR LAP
#7 bar = 4'-2"

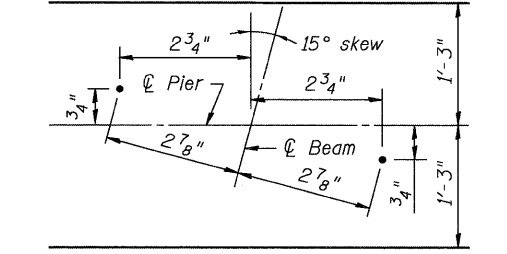


SEC. THRU ABUT.

Notes:
Pour steps monolithically with cap.
For details of Bar Splicers, see sheet 42 of 48.
Space reinforcement in cap to miss anchor bolts.



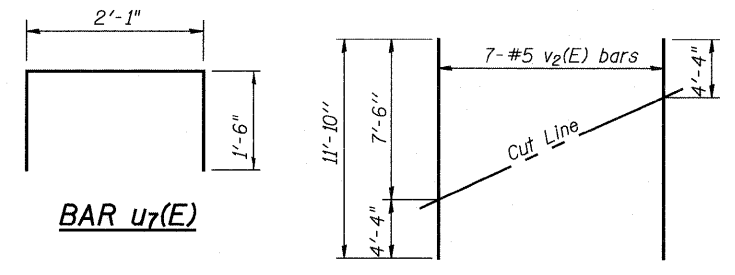
PLAN



TYPICAL ANCHOR BOLT LOCATION

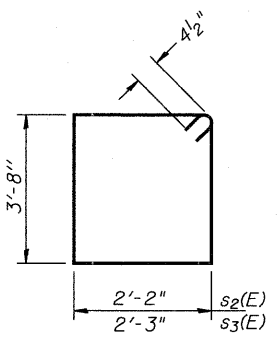
PILE DATA

Type: 14" ϕ Metal Shell w/ 0.25" walls
Nominal Required Bearing: 364 Kips/Pile
Factored Resistance Available: 200 Kips/Pile
Est. Length: 46 Feet
No. Production Piles: 8
No. Test Piles: 1

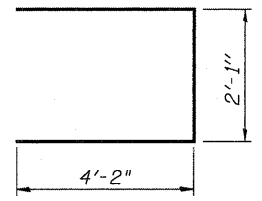


FIELD CUTTING DIAGRAM

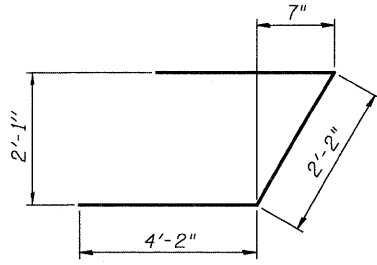
Order v2(E) full length. Cut as shown and use remainder of bars in opposite face.



BARS s2(E) & s3(E)



BAR u1(E)

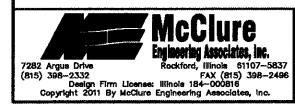


BAR u(E)

BILL OF MATERIAL

Bar	No.	Size	Length	Shape
h(E)	16	#5	9'-8"	—
h6(E)	3	#5	16'-5"	—
p(E)	16	#7	34'-6"	—
s2(E)	61	#4	12'-5"	□
s3(E)	1	#4	12'-7"	□
u(E)	4	#6	10'-6"	┘
u1(E)	4	#6	10'-5"	┘
u7(E)	17	#4	5'-1"	┘
v1(E)	127	#5	4'-10"	—
v2(E)	7	#5	11'-10"	—
Structure Excavation			Cu. Yd.	36.1
Concrete Structures			Cu. Yd.	26.6
Reinforcement Bars, Epoxy Coated			Pound	2765
Furnishing Metal Shell Piles, 14" ϕ x 0.250"			Foot	370
Driving Piles			Foot	370
Test Pile, Metal Shells			Each	1

Bars indicated thus 1 x 2-#5 etc. indicates 1 line of bars with 2 lengths per line.



USER NAME =	DESIGNED - JTT	REVISIONS -
PLLOT SCALE =	CHECKED - VAC	REVISIONS -
PLLOT DATE =	DRAWN - JBB	REVISIONS -
	CHECKED - JTT	REVISIONS -

STATE OF ILLINOIS
DEPARTMENT OF TRANSPORTATION

SOUTHEAST ABUTMENT DETAILS
STRUCTURE NO. 101-0194

BRIDGE SHEET NO. 34 OF 48 SHEETS

F.A.I. RTE.	SECTION	COUNTY	TOTAL SHEETS	SHEET NO.
90	(X2)-1R	WINNEBAGO	510	379
			CONTRACT NO. 64C29	
ILLINOIS FED. AID PROJECT				