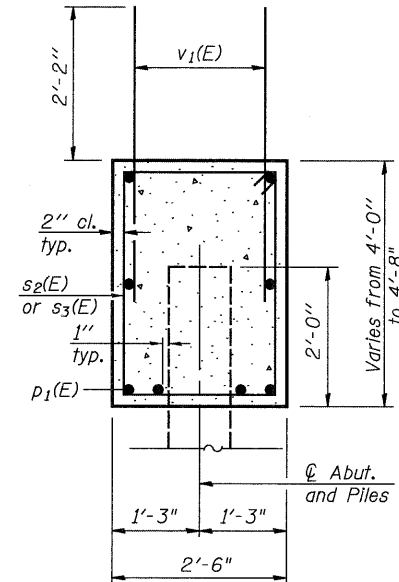


**PILE DATA**

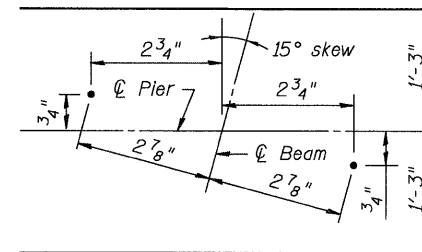
Type: 14"  $\phi$  Metal Shell w/ 0.25" walls  
 Nominal Required Bearing: 364 Kips/Pile  
 Factored Resistance Available: 200 Kips/Pile  
 Est. Length: 46 Feet  
 No. Production Piles: 9  
 No. Test Piles: 1

**ELEVATION**  
 (Looking South)

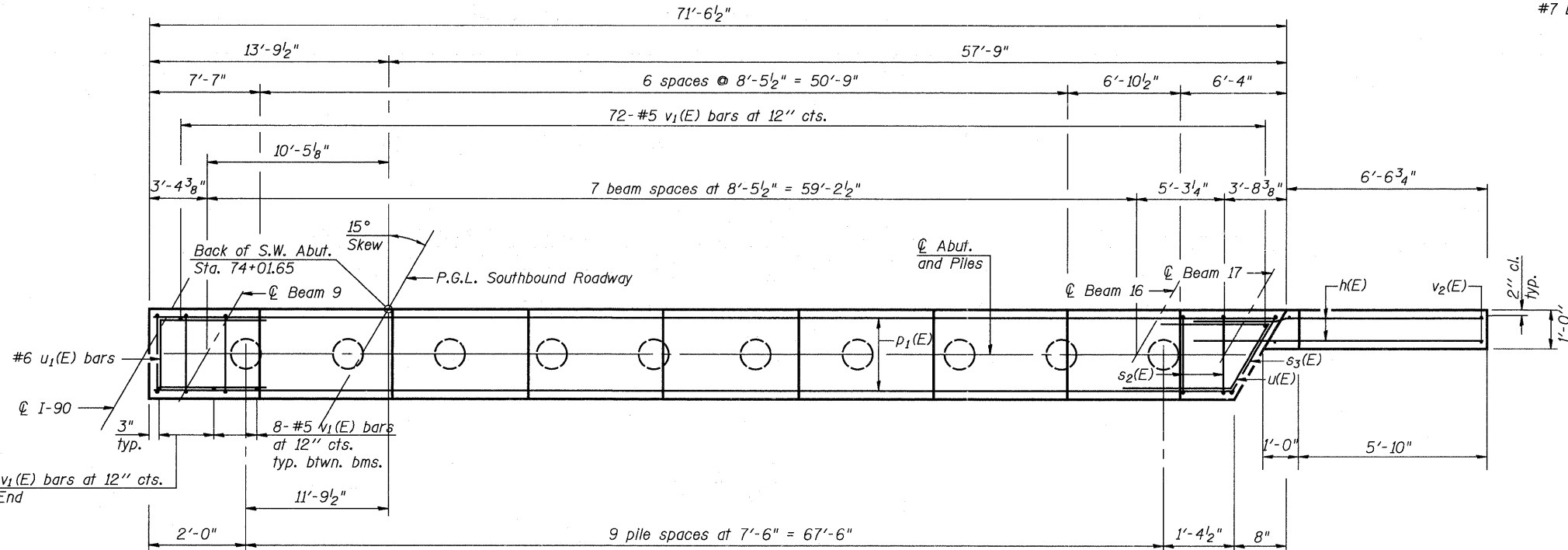
**MINIMUM BAR LAP**  
 #7 bar = 4'-2"



**SEC. THRU ABUT.**

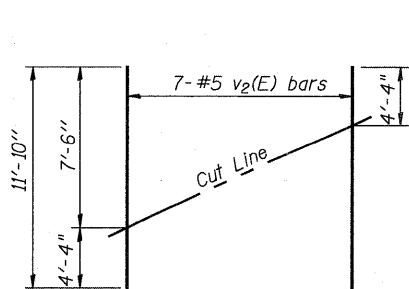


**TYPICAL ANCHOR BOLT LOCATION**



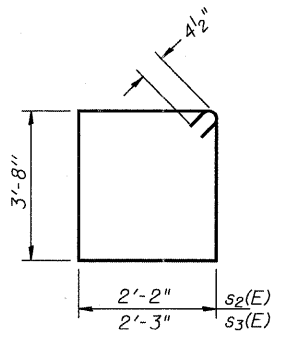
**PLAN**

Notes:  
 Pour steps monolithically with cap.  
 For details of Bar Splacers, see sheet 42 of 48.  
 Space reinforcement in cap to miss anchor bolts.

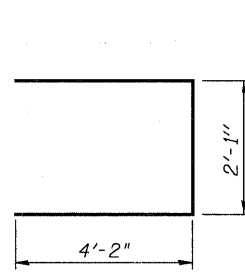


**FIELD CUTTING DIAGRAM**

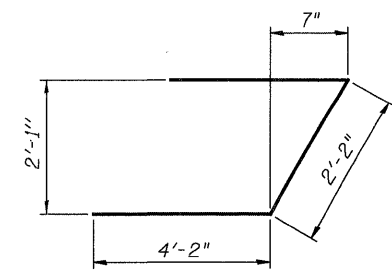
Order v2(E) full length. Cut as shown and use remainder of bars in opposite face.



**BARS s2(E) & s3(E)**



**BAR u1(E)**



**BAR u(E)**

**BAR u7(E)**

**BILL OF MATERIAL**

Bar	No.	Size	Length	Shape
h(E)	16	#5	9'-8"	—
h7(E)	3	#5	33'-6"	—
p1(E)	16	#7	37'-8"	—
s2(E)	78	#4	12'-5"	□
s3(E)	1	#4	12'-7"	□
u(E)	4	#6	10'-6"	┌
u1(E)	4	#6	10'-5"	┌
u7(E)	34	#4	5'-1"	┌
v1(E)	142	#5	4'-10"	—
v2(E)	7	#5	11'-10"	—
Structure Excavation			Cu. Yd.	38.4
Concrete Structures			Cu. Yd.	29.4
Reinforcement Bars, Epoxy Coated			Pound	3197
Furnishing Metal Shell Piles, 14" $\phi$ x 0.250"			Foot	415
Driving Piles			Foot	415
Test Pile, Metal Shells			Each	1

Bars indicated thus 1 x 2-#5 etc. indicates 1 line of bars with 2 lengths per line.



USER NAME =	DESIGNED - JTT	REVISED -
PLLOT SCALE =	CHECKED - VAC	REVISED -
PLLOT DATE =	DRAWN - JBB	REVISED -
	CHECKED - JTT	REVISED -

**STATE OF ILLINOIS**  
**DEPARTMENT OF TRANSPORTATION**

**SOUTHWEST ABUTMENT DETAILS**  
**STRUCTURE NO. 101-0193**

BRIDGE SHEET NO. 36 OF 48 SHEETS

F.A.I. RTE. 90	SECTION (X2-1)R	COUNTY WINNEBAGO	TOTAL SHEETS 510	SHEET NO. 381
				CONTRACT NO. 64C29
ILLINOIS FED. AID PROJECT				