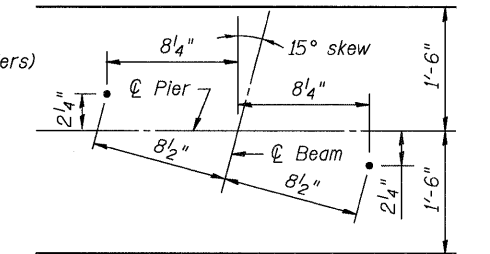
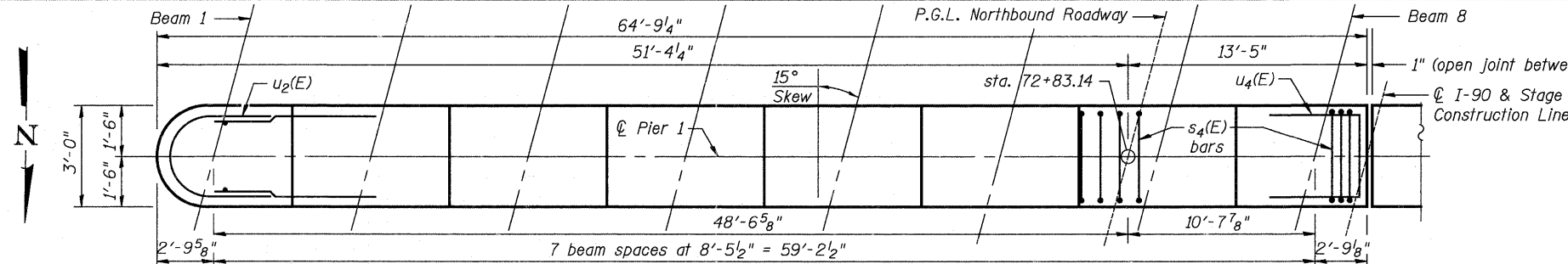


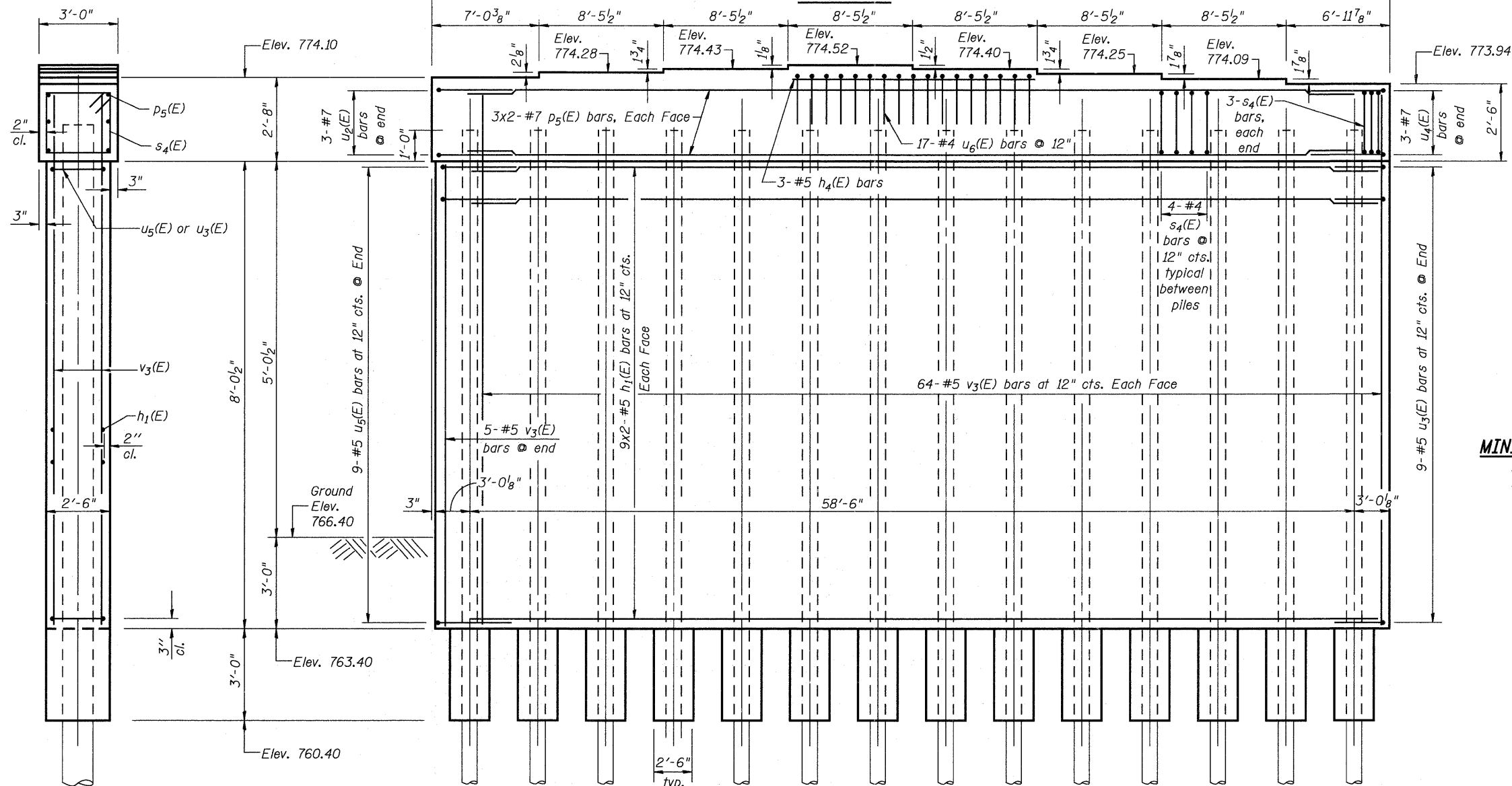
Notes:
 Space reinforcement in cap to miss anchor bolts.
 Pour steps monolithically with cap.
 For details of piles, see sheet 41 of 48.

PILE DATA

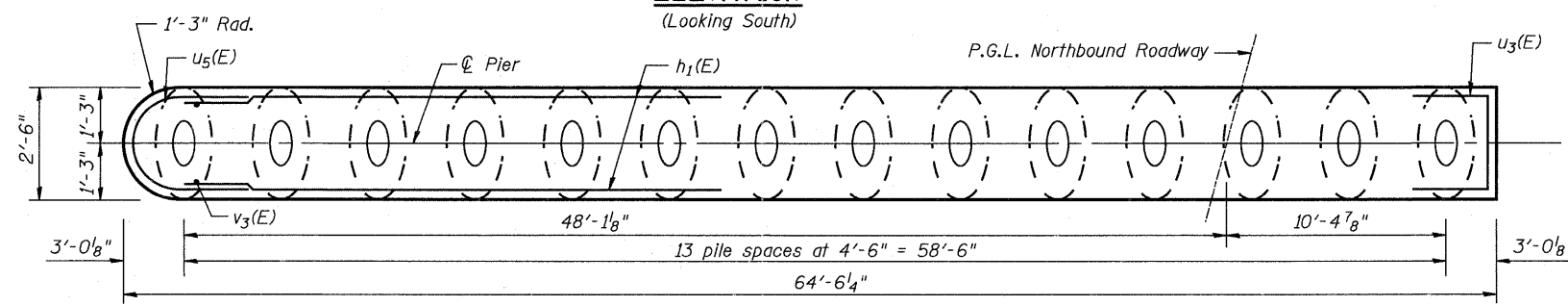
Type: 14" ϕ Metal Shell w/ 0.25" walls
 Nominal Required Bearing: 416 Kips/Pile
 Factored Resistance Available: 191 Kips/Pile
 Est. Length: 82 Feet
 No. Production Piles: 14
 No. Test Piles: 0



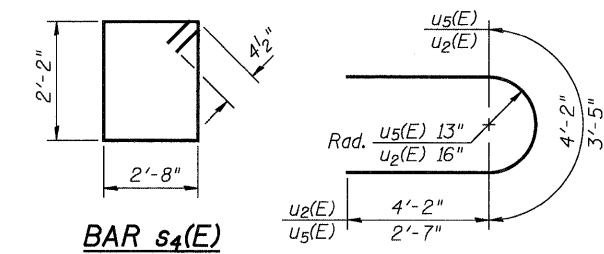
TYPICAL ANCHOR BOLT LOCATION



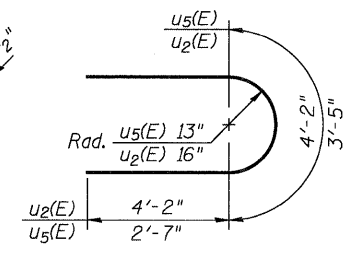
ELEVATION
(Looking South)



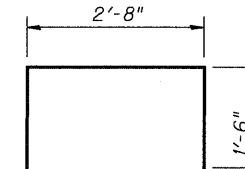
STEM PLAN



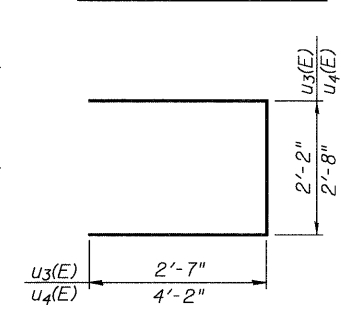
BAR s4(E)



BAR u5(E) & u2(E)



BAR u6(E)



BAR u3(E) & u4(E)

MINIMUM BAR LAP

#5 bar = 2'-7"
 #7 bar = 4'-2"

BILL OF MATERIAL

Bar	No.	Size	Length	Shape
h1(E)	36	#5	32'-9"	—
h4(E)	3	#5	16'-7"	—
p5(E)	12	#7	33'-7"	—
s4(E)	58	#4	10'-5"	□
u2(E)	3	#7	12'-6"	U
u3(E)	9	#5	7'-4"	U
u4(E)	3	#7	11'-0"	U
u5(E)	9	#5	8'-7"	U
u6(E)	17	#4	5'-8"	U
v3(E)	133	#5	10'-2"	—
Structure Excavation		Cu. Yd.	49.5	
Concrete Structures		Cu. Yd.	63.1	
Reinforcement Bars, Epoxy Coated		Pound	4,277	
Furnishing Metal Shell Piles, 14" ϕ x 0.250"		Foot	1150	
Driving Piles		Foot	1150	
Concrete Encasement		Cu. Yd.	6.0	

Bars indicated thus 1 x 2-#5 etc. indicates 1 line of bars with 2 lengths per line.

McClure Engineering Associates, Inc.
 7282 Argus Drive Rockford, Illinois 61107-5837
 (815) 398-2332 FAX (815) 398-2496
 Design Firm License: Illinois 184-000816
 Copyright 2011 By McClure Engineering Associates, Inc.

McClure Engineering Associates, Inc.
 7282 Argus Drive Rockford, Illinois 61107-5837
 (815) 398-2332 FAX (815) 398-2496
 Design Firm License: Illinois 184-000816
 Copyright 2011 By McClure Engineering Associates, Inc.

USER NAME =	DESIGNED - JTT	REVISOR -
PLOT SCALE =	CHECKED - VAC	REVISIONS -
PLOT DATE =	DRAWN - JBB	REVISIONS -
	CHECKED - JTT	REVISIONS -

STATE OF ILLINOIS
 DEPARTMENT OF TRANSPORTATION

PIER 1 NORTHBOUND DETAILS
 STRUCTURE NO. 101-0194
 BRIDGE SHEET NO. 37 OF 48 SHEETS

F.A.I. RTE.	SECTION	COUNTY	TOTAL SHEETS	SHEET NO.
90	(X2-1R)	WINNEBAGO	510	382
				CONTRACT NO. 64C29
ILLINOIS FED. AID PROJECT				