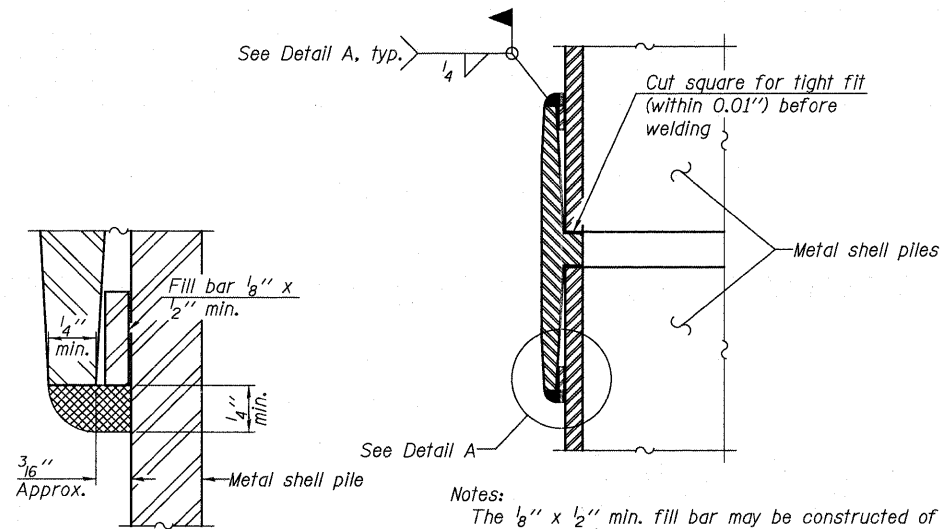


**METAL SHELL PILE TABLE**

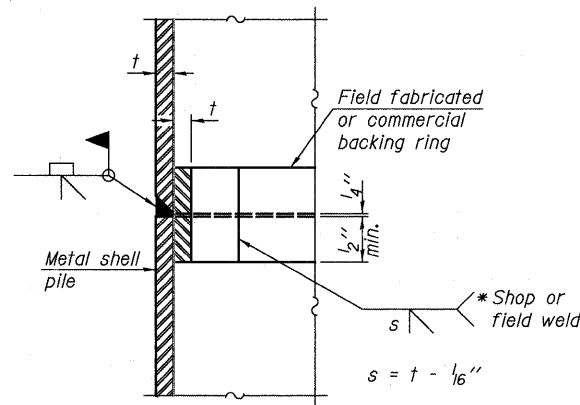
Designation and outside diameter	Wall thickness t	Weight per foot (Lbs./ft.)	Inside volume (yd. <sup>3</sup> /ft.)
111	0.250"	36.71	0.0368



**DETAIL A**

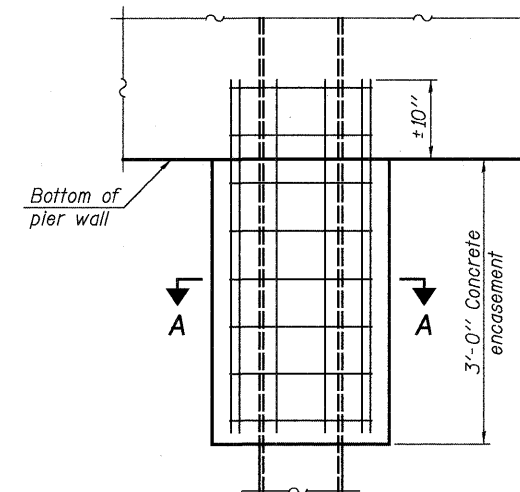
**Notes:**  
 The 1/8" x 1/2" min. fill bar may be constructed of 2 bars with a 1/8" max. gap between them.  
 Pile segments shall be driven to solid contact with splicer before welding.

**WELDED COMMERCIAL SPLICE**



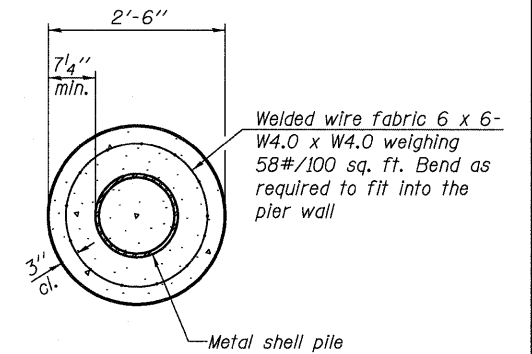
**COMPLETE PENETRATION WELD SPLICE**

\* Field fabricated backing ring may be made from pile shell by removing segment to allow reducing circumference and vertically rejoin with partial joint penetration weld.



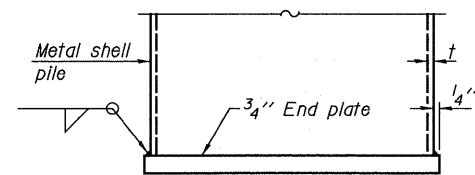
**ELEVATION**

**CONCRETE ENCASEMENT AT PIERS**

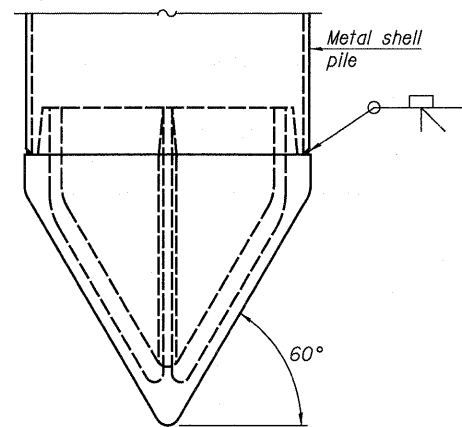


**SECTION A-A**

**Note:**  
 Forms for encasement may be omitted when soil conditions permit.



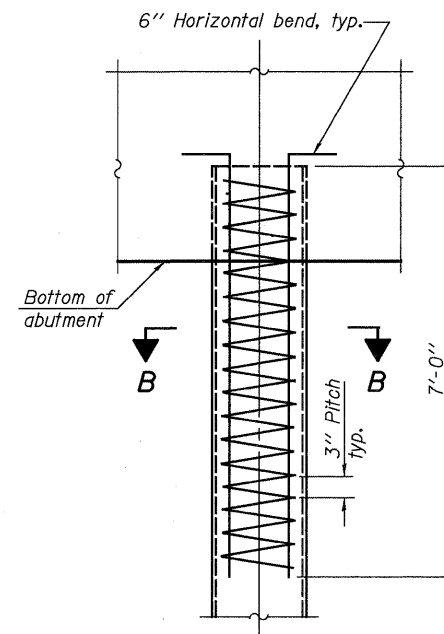
**END PLATE ATTACHMENT**



**METAL SHELL PILE SHOE ATTACHMENT**

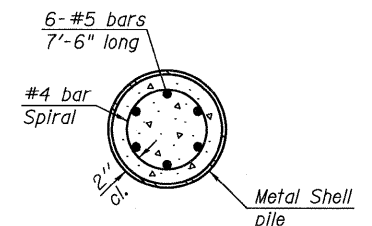
(See Note A)

**Note A:**  
 When called for on the plans, the Contractor shall furnish metal shell pile shoes consisting of a single piece conical pile point as shown. The pile shoes shall be cast in one piece steel according to either ASTM A 148 Grade 90-60 or AASHTO M 103 Grade 65-35 and shall provide full bearing over the full circumference of the metal shell pile. The pile shoe shall have tapered leads to assure proper alignment and fitting and shall be secured to the pile with a circumferential weld.



**ELEVATION**

**METAL SHELL REINFORCEMENT AT ABUTMENTS**



**SECTION B-B**

**Note:**  
 The metal shell piles shall be according to ASTM A 252 Grade 3.

F-MS

7-1-10

**McClure**  
 Engineering Associates, Inc.  
 7282 Argus Drive  
 Rockford, Illinois 61107-9837  
 (815) 398-2332  
 Design Firm License: Illinois 184-000519  
 Copyright 2011 by McClure Engineering Associates, Inc.

USER NAME =	DESIGNED - JTT
PLOT SCALE =	CHECKED - VAC
PLOT DATE =	DRAWN - JBB
	CHECKED - JTT

REVISD -	REVISD -
REVISD -	REVISD -
REVISD -	REVISD -
REVISD -	REVISD -

**STATE OF ILLINOIS**  
**DEPARTMENT OF TRANSPORTATION**

**METAL SHELL PILE DETAILS**  
**STRUCTURE NO. 101-0193 & 101-0194**

BRIDGE SHEET NO. 41 OF 48 SHEETS

F.A.T. RTE.	SECTION	COUNTY	TOTAL SHEETS	SHEET NO.
90	(X2-1)R	WINNEBAGO	510	386
			CONTRACT NO. 64C29	
ILLINOIS FED. AID PROJECT				