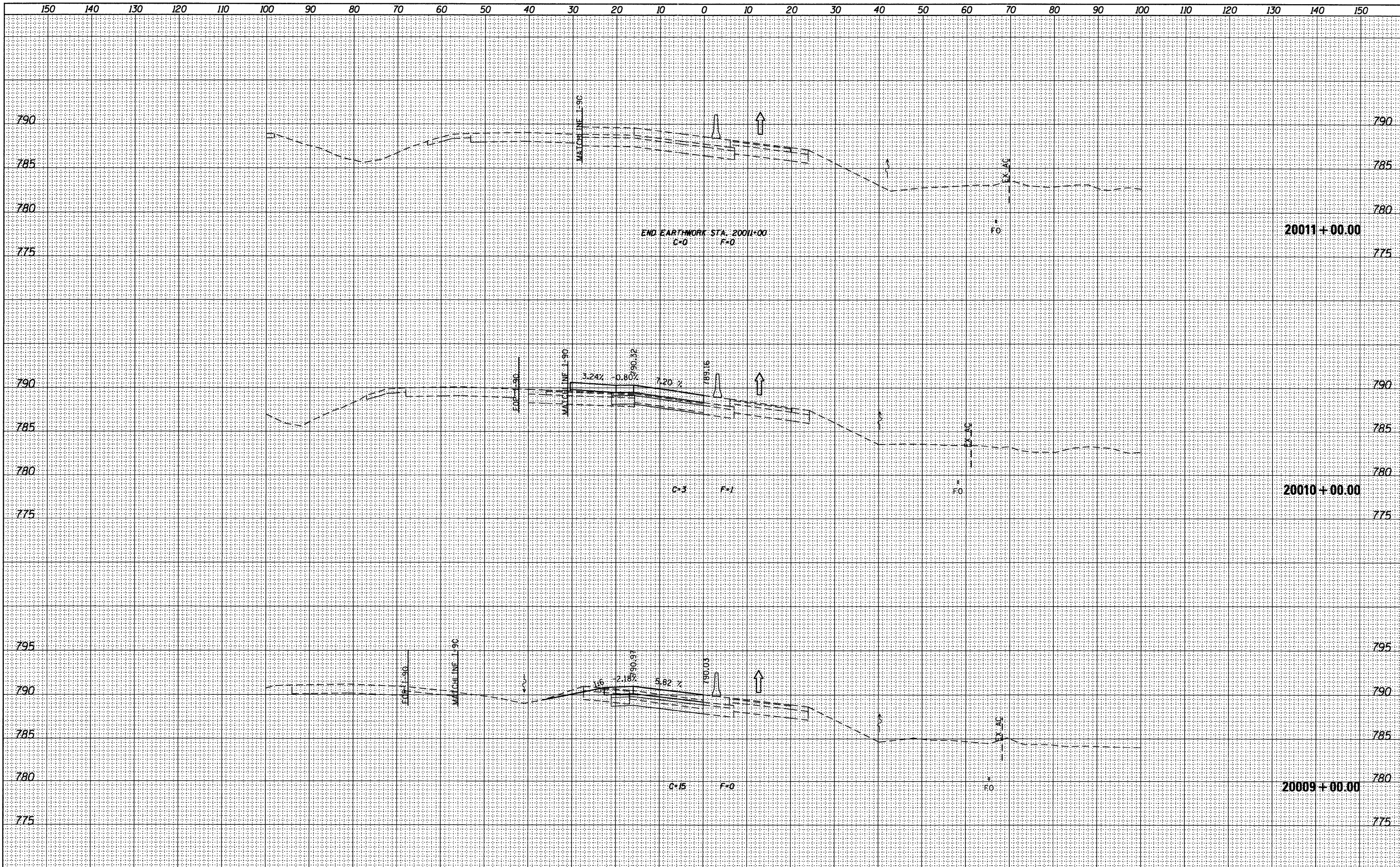


DATE	
BY	
FINAL SURVEY	
PLOTTED	
REPLATE	
NOTE BOOK	
AREAS	
CHECKED	
NO.	

DATE	
BY	
ORIGINAL SURVEY	
PLOTTED	
REPLATE	
NOTE BOOK	
AREAS	
CHECKED	
NO.	



**McClure LOCHNER**  
Engineering Associates, Inc.  
**RVA**  
Engineering

USER NAME =	USERNAME	DESIGNED -	MM	REVISED -	
FILE NAME =	sht-xsst-rampb-stg2B.dgn	DRAWN -	MS	REVISED -	
PLOT SCALE =	10.0000' / 1"	CHECKED -	MM	REVISED -	
PLOT DATE =	10/19/2011	DATE -	10/21/2011	REVISED -	

**STATE OF ILLINOIS  
DEPARTMENT OF TRANSPORTATION**

<b>CROSS SECTIONS</b>	
<b>IL 75 RAMP B - STAGE 2B</b>	
SCALE: H: 1"=50'	V: 1"=5'
SHEET NO. 2 OF 2 SHEETS	STA. 20009+00.00 TO STA. 20011+00.00

F.A.I. RTE.	SECTION	COUNTY	TOTAL SHEETS	SHEET NO.
90	(X2-1)R	WINNEBAGO	510	478
CONTRACT NO. 64C29				
ILLINOIS FED. AID PROJECT				