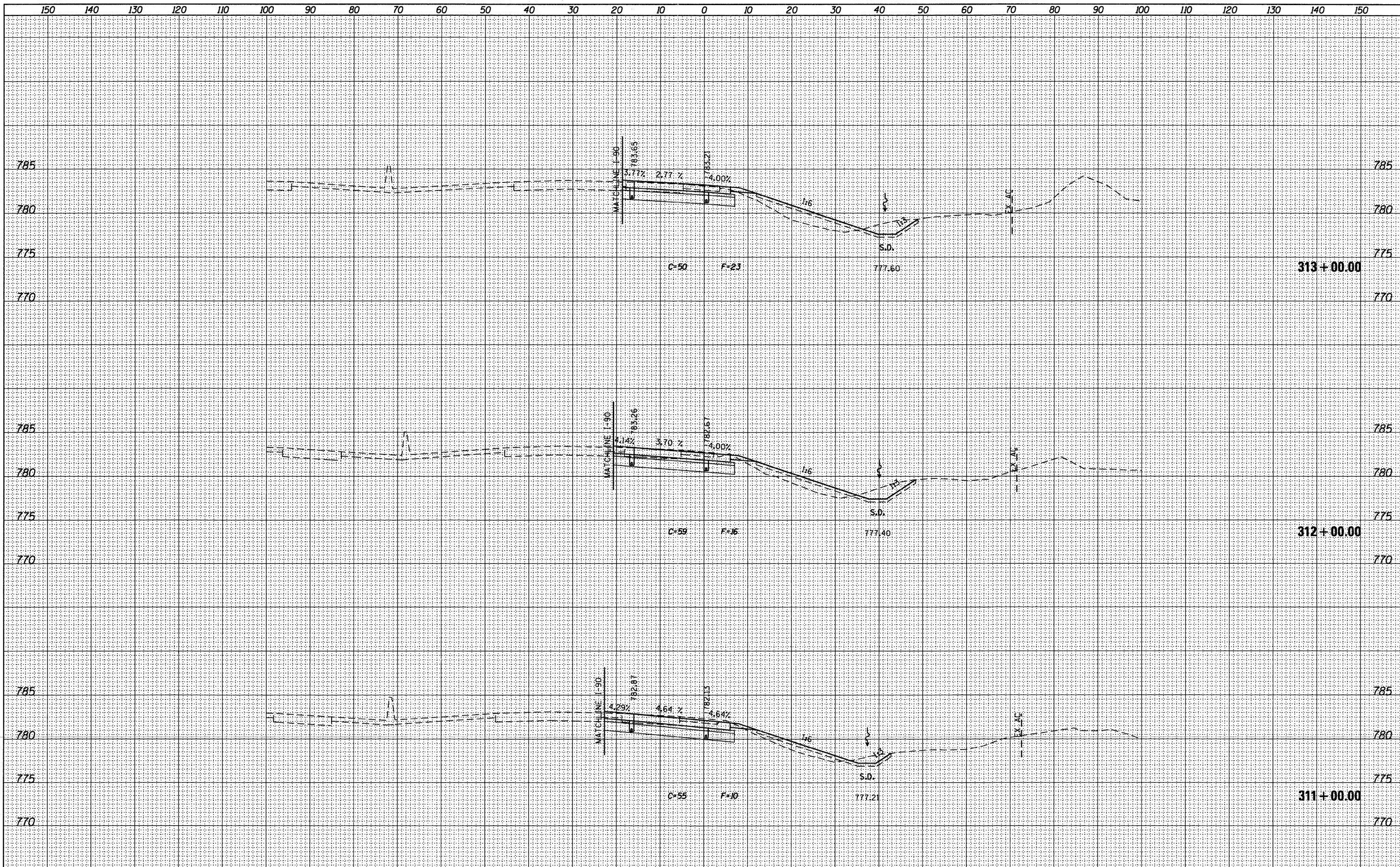


DATE	
BY	
FINAL SURVEY	SURVEYED
NOTE BOOK	PLOTTED
NO.	REVISIONS
	AREAS CHECKED

DATE	
BY	
ORIGINAL SURVEY	SURVEYED
NOTE BOOK	PLOTTED
NO.	REVISIONS
	AREAS CHECKED



McClure LOCHNER
Engineering Associates, Inc.
RWA
Engineering Associates, Inc.

USER NAME = .USERNAME.	DESIGNED - MM	REVISED -
FILE NAME = D286606-shr-xsshtneramp.dgn	DRAWN - MS	REVISED -
PLOT SCALE = 10.0000' / 1" =	CHECKED - MM	REVISED -
PLOT DATE = 10/19/2011	DATE - 10/21/2011	REVISED -

**STATE OF ILLINOIS
DEPARTMENT OF TRANSPORTATION**

**CROSS SECTIONS
ROCKTON RD NE RAMP**

SCALE: H: 1"=10'
V: 1"=5'

SHEET NO. 7 OF 8 SHEETS STA. 311+00.00 TO STA. 313+00.00

F.A.I. RTE.	SECTION	COUNTY	TOTAL SHEETS	SHEET NO.
90	(X2-1)R	WINNEBAGO	510	487
CONTRACT NO. 64C29			ILLINOIS FED. AID PROJECT	