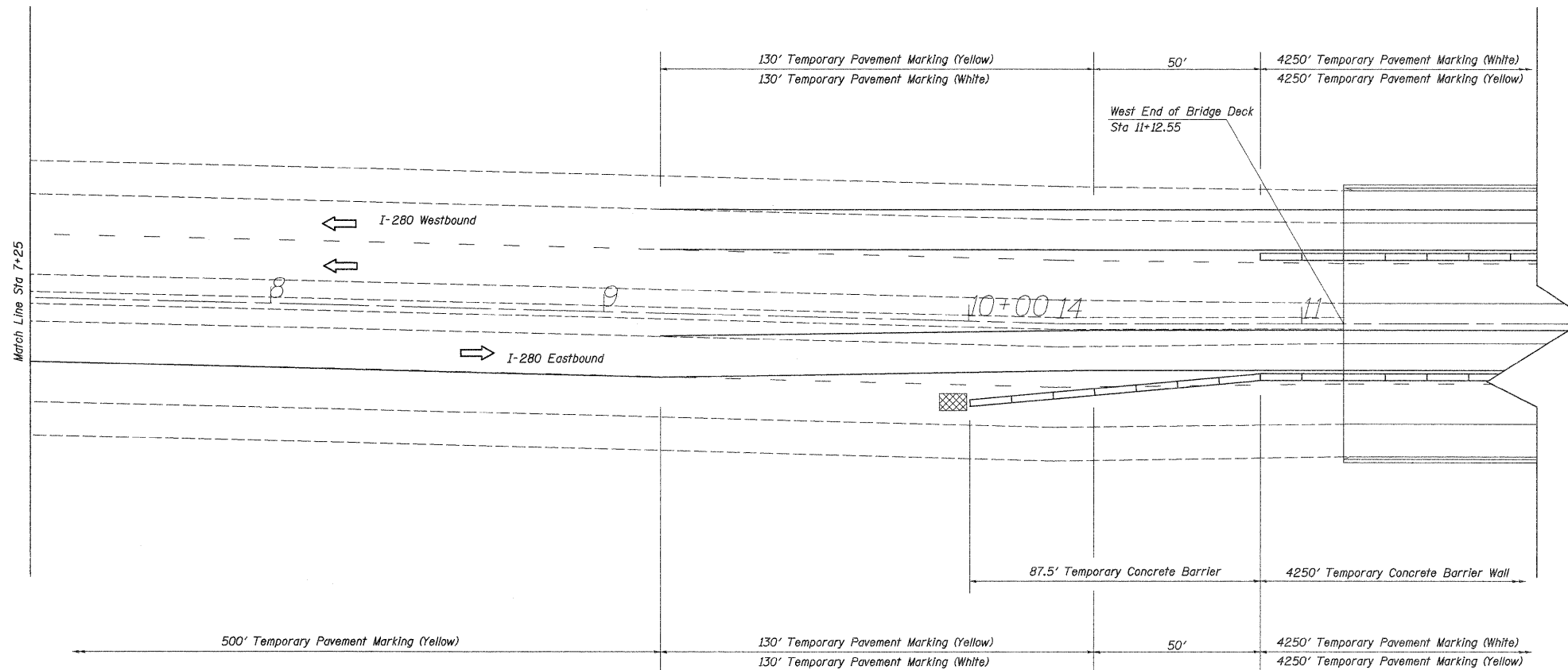
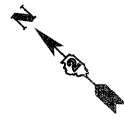


Traffic Control Plan Stage II

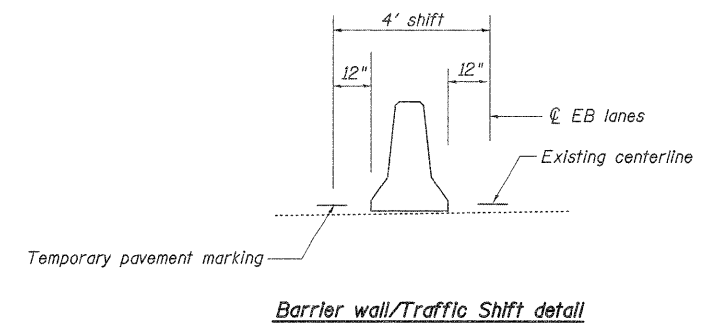
Iowa approach

Refer to Standard 701402 for additional signs and devices.



Relocate Temporary Concrete Barrier Wall	
Stage II	Ft
Eastbound	87.5+4250 = 4,337.5
Westbound	87.5+4250 = 4,337.5
Total	8,675 Ft

Relocate Temporary Impact Attenuators	
Stage II	Each
Eastbound	1
Westbound	1
Total	2 Each



FILE NAME =	USER NAME = linkedj	DESIGNED -	REVISED -	STATE OF ILLINOIS DEPARTMENT OF TRANSPORTATION	Traffic Control Plan Structure No. 081-0106 Stage II Iowa Approach	F.A.I. RTE.	SECTION	COUNTY	TOTAL SHEETS	SHEET NO.
C:\BR\CADD\plans\Rock Island County\081-0106\PLA\eng.dgn		DRAWN -	REVISED -			280	(81-181M-2)	Rock Island	30	13
PLOT SCALE = 22.4984' / in.		CHECKED -	REVISED -			CONTRACT NO. 64F22				
PLOT DATE = Thu Oct 13 09:58:09 2011		DATE -	REVISED -			ILLINOIS FED. AID PROJECT				