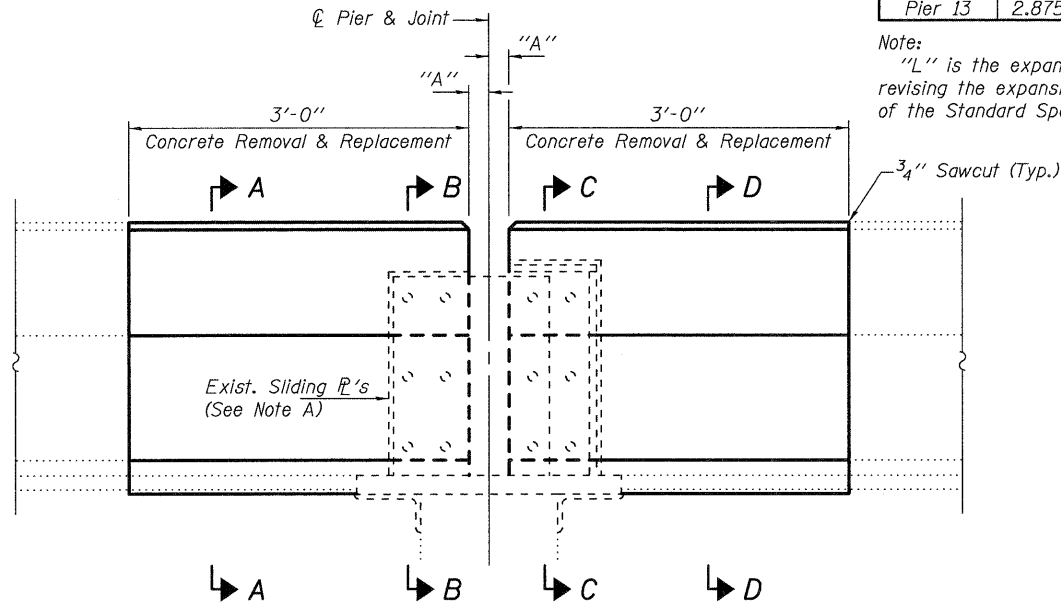


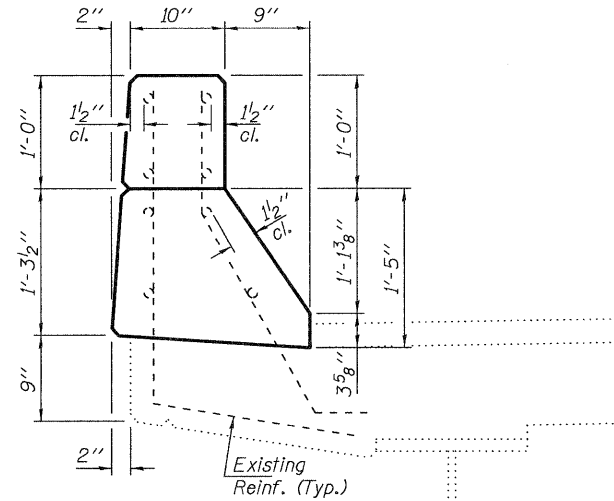
TABLE FOR DIMENSION "A" AT 50°F.

Location	Dim. "A"	"L"	Location	Dim. "A"	"L"
W. Abut.	1.125"	200 ft.	Pier 14	2.875"	770 ft.
Pier 3	1.625"	300 ft.	Pier 17	2.125"	550 ft.
Pier 7	2.125"	500 ft.	Pier 20	2.125"	500 ft.
Pier 10	1.625"	350 ft.	Pier 24	1.625"	400 ft.
Pier 13	2.875"	400 ft.	E. Abut.	1.125"	200 ft.

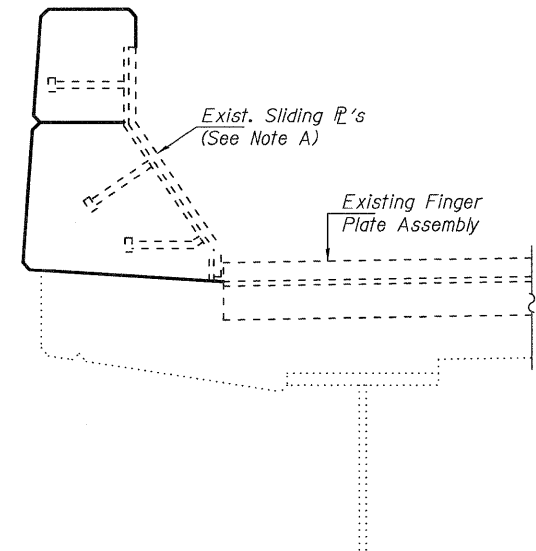
Note:
"L" is the expansion length that is to be utilized when revising the expansion joint opening as per Article 520.04 of the Standard Specifications.



TYPICAL ELEVATION VIEW OF PARAPET AT PIER EXPANSION JOINTS

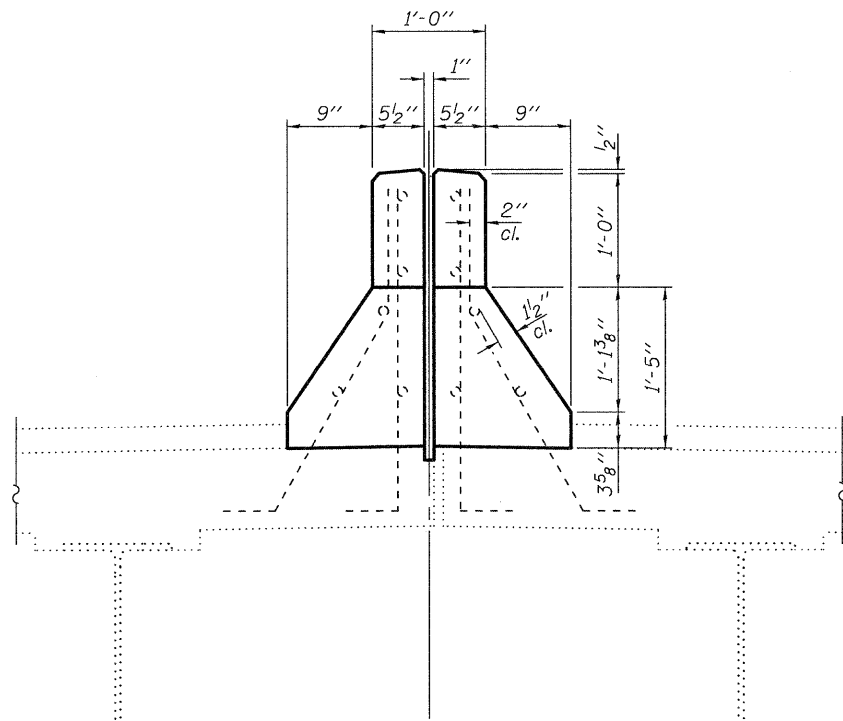


SECTION A-A
(at edge parapet)

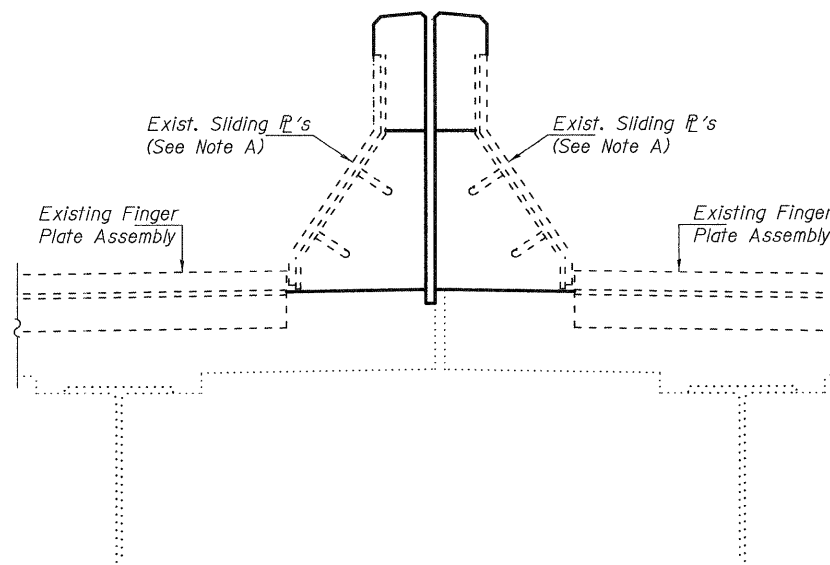


SECTION B-B
(at edge parapet)

Note A:
Existing steel plates and studs embedded in the parapet shall be removed with care and shall be reused in the new construction. If the plates are damaged in the removal process, the Contractor shall replace them at his expense.



SECTION D-D
(at center parapet)



SECTION C-C
(at center parapet)

TABLE OF PARAPET REMOVAL & REPLACEMENT LOCATIONS

Location	North Parapet	Median Parapet	South Parapet
W. Abut.			
Pier 3	Yes	Yes	Yes
Pier 7	Yes	Yes	Yes
Pier 10	Yes	Yes	Yes
Pier 13	Yes	Yes	Yes
Pier 14			
Pier 17	Yes	Yes	Yes
Pier 20	Yes	Yes	Yes
Pier 24	Yes	Yes	Yes
E. Abut.		Yes	
Span 13		Yes	
Span 20			Yes

BILL OF MATERIAL

ITEM	UNIT	QUANTITY
Concrete Removal	Cu. Yd.	16.5
Concrete Superstructure	Cu. Yd.	16.5