

1-20-2012 LETTING ITEM 036

STATE OF ILLINOIS  
DEPARTMENT OF TRANSPORTATION  
DIVISION OF HIGHWAYS

**PROPOSED  
HIGHWAY PLANS**

FAI ROUTE 39 (I-39)  
SECTION D2 MRS 2012-1

BRIDGE RESURFACING  
WINNEBAGO COUNTY

C-92-007-12

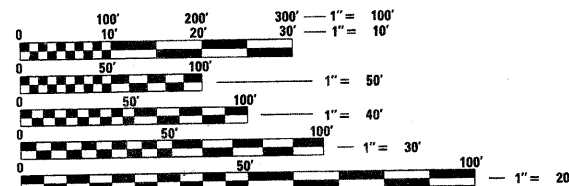
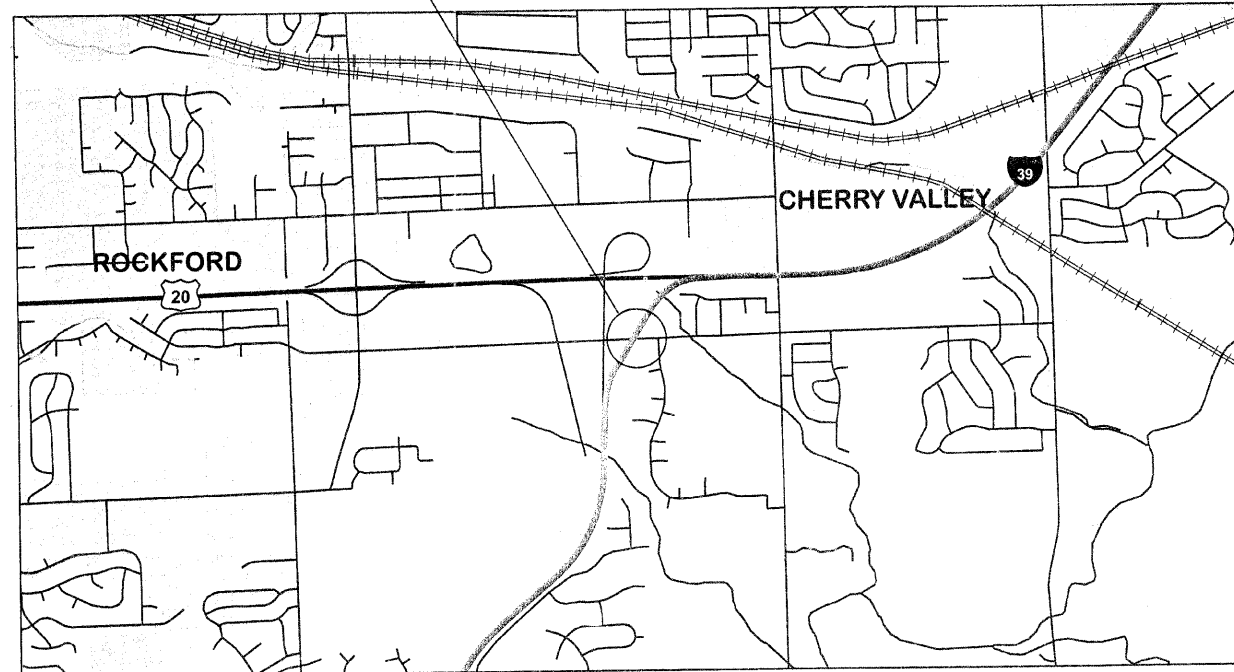
FOR INDEX OF SHEETS, SEE SHEET NO. 3

F.A.I. RTE.	SECTION	COUNTY	TOTAL SHEETS	SHEET NO.
39	D2 MRS 2012-1	Winnebago	10	1
		ILLINOIS	CONTRACT NO. 64H32	

D-92-004-12



Project Location  
Structure No. 101-0140



FULL SIZE PLANS HAVE BEEN PREPARED USING STANDARD ENGINEERING SCALES. REDUCED SIZED PLANS WILL NOT CONFORM TO STANDARD SCALES. IN MAKING MEASUREMENTS ON REDUCED PLANS, THE ABOVE SCALES MAY BE USED.

J.U.L.I.E.  
JOINT UTILITY LOCATION INFORMATION FOR EXCAVATION  
1-800-892-0123  
OR 811

PROJECT ENGINEER: MAHMOUD ETEMADI 815/284-5393  
PLAN TECHNICIAN: DAN LINK 815/284-5416

CONTRACT NO. 64H32

STATE OF ILLINOIS  
DEPARTMENT OF TRANSPORTATION  
DIVISION OF HIGHWAYS

SUBMITTED Oct 13 20 11  
Eric S. Therkildsen  
DEPUTY DIRECTOR OF HIGHWAYS, REGION ENGINEER

December 9 20 11  
Scott E. Stett, P.E.  
Acting ENGINEER OF DESIGN AND ENVIRONMENT

December 9 20 11  
William R. Fey  
Interim DIRECTOR OF HIGHWAYS, CHIEF ENGINEER

**PRINTED BY THE AUTHORITY  
OF THE STATE OF ILLINOIS**

# GENERAL NOTES

The final top 100 mm (four inches) of soil in any right-of-way area disturbed by the Contractor must be capable of supporting vegetation. The soil must be from the A horizon (zero to 2' deep) of soil profiles of local soils.

All Borrow/Waste/Use sites must be approved by the Department prior to removing any material from the project or initiating any earthmoving activities, including temporary stockpiling outside the limits of construction.

The Contractor shall seed all disturbed areas within the project limits. Seeding Class 4 or 2A shall be used, except in front of properties where the grass will be mowed, then use Seeding, Class 1. Class 2A shall be used on front slopes and ditch bottoms. Class 4 shall be used behind Type A gutter, on all backslopes and areas behind the backslope, and beyond the toe of front slope on fill sections without ditches. This work will be included in the contract unit price per Ton for HOT-MIX ASPHALT SURFACE COURSE, MIX "D", N90.

Fertilizer shall be applied to all disturbed areas and incorporated into the seedbed prior to seeding or placement of sod at the rate specified in Sections 250 and 252 of the Standard Specifications. This work shall be included in the cost of HOT-MIX ASPHALT SURFACE COURSE, MIX "D", N90.

Mulch Method II shall be applied over all seeded areas. This shall be included in the cost of the HOT-MIX ASPHALT SURFACE COURSE, MIX "D", N90.

The following Mixture Requirements are applicable for this project:

Mixture Uses(s): Surface  
 PG: SBS PG 70-22  
 Design Air Voids 4.0 @ N90  
 Mixture Composition IL 9.5 or 12.5  
 (Gradation Mixture)  
 Friction Aggregate D  
 20 Year ESAL 34.2  
 112 lbs/sy/in

Bituminous and Aggregate prime coat shall be placed in accordance with Section 406 of the Standard Specifications. The cost of the prime coats shall be included in the contract unit price per metric ton (ton) for HOT-MIX ASPHALT SURFACE COURSE, MIX "D", N90.

The Contractor shall be responsible for protecting utility property during construction operations as outlined in Article 107.31 of the Standard Specifications. A minimum of 48 hours advance notice is required for non-emergency work. The JULIE number is 800-892-0123.

A contingency quantity of 5 cubic feet has been included to repair Polymer Concrete nosing at bridge expansion joints as needed. At the time of plan preparation the existing nosing was in good condition but shall any nosing break-up or deteriorate over the winter months it shall be repaired as directed by the Engineer

# INDEX OF SHEETS

1. Cover Sheet
2. General Notes, Index of Sheets, Standards
3. Summary of Quantities
4. General Plan & Elevation
5. Deck Plan & Cross Section
6. Approach Repairs
7. Detour Map
8. Detour Plan
9. Detour Plan
10. Detour Plan

# STANDARDS

- 701101-02 Off-Road Operations, Multilane, 15' (4.5 m) to 24" (600 mm) From Pavement Edge
- 701400-05 Approach to Lane Closure, Freeway/Expressway
- 701401-06 Lane Closure, Freeway/Expressway
- 701426-04 Lane Closure, Multilane, Intermittent or Moving Operation, for Speeds > 45 MPH
- 701451-01 Ramp Closure Freeway/Expressway
- 701901-02 Traffic Control Devices
- 720011-01 Metal Posts for Signs, Markers and Delineators
- 728001-01 Telescoping Steel Sign Support
- 729001-01 Applications of Types A and B Metal Posts (For Signs & Markers)

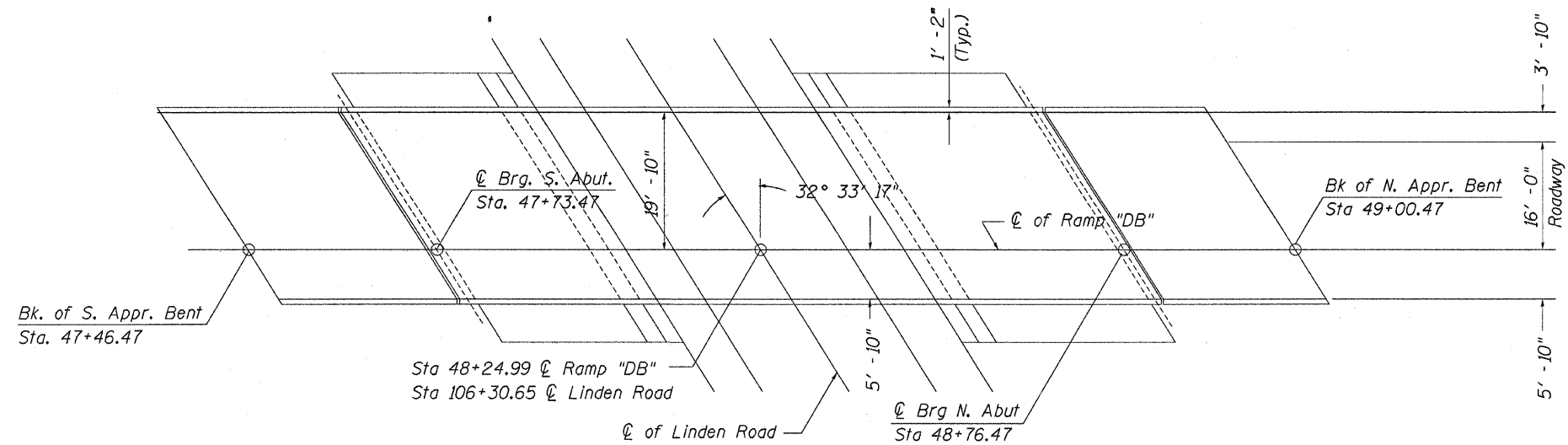
FILE NAME = D:\BRV\CADD\plans\Winnebago County\1010140\PLANeng.dgn	USER NAME = lmkdJ	DESIGNED -	REVISED -	<b>STATE OF ILLINOIS DEPARTMENT OF TRANSPORTATION</b>	<b>General Notes, Index of Sheets, Standards</b>		F.A.I. RTE.	SECTION	COUNTY	TOTAL SHEETS	SHEET NO.
	PLOT SCALE = 50.0000' / in.	DRAWN -	REVISED -				39	D2 MRS 2012-1	Winnebago	10	2
PLOT DATE = Thu Oct 13 08:26:16 2011	CHECKED -	REVISED -	DATE -	SCALES:	SHEET NO. OF SHEETS	STA. TO STA.	ILLINOIS FED. AID PROJECT CONTRACT NO. 64H32				

# SUMMARY OF QUANTITIES

PAY ITEM #	DESCRIPTION	UNIT	URBAN 100% STATE TOTAL QUANTITY -0014-	BRIDGE 0014	APPROACH 0005
40603345	HOT-MIX ASPHALT SURFACE COURSE, MIX "D", N90	TON	61	34	27
67100100	MOBILIZATION	L SUM	1	0.5	0.5
70100205	TRAFFIC CONTROL AND PROTECTION, STANDARD 701401	EACH	1	0	1
70100820	TRAFFIC CONTROL AND PROTECTION, STANDARD 701451	L SUM	1		1
* 78001110	PAINT PAVEMENT MARKING - LINE 4"	FOOT	603	308	295
X0322121	SHEET WATERPROOFING MEMBRANE SYSTEM	SQ YD	399	399	
X7015005	CHANGEABLE MESSAGE SIGN	CAL DA	30		30
Z0004556	HOT-MIX ASPHALT SURFACE REMOVAL (DECK)	SQ YD	399	399	
Z0010910	COLD MILLING (SPECIAL)	SQ YD	228		228
Z0021922	SILICONE JOINT SEALER	FOOT	144	130	14
Z0041895	POLYMER CONCRETE	CU FT	5	5	

\*Specialty Items

FILE NAME =	USER NAME = linkdj	DESIGNED -	REVISED -	<b>STATE OF ILLINOIS DEPARTMENT OF TRANSPORTATION</b>	<b>Summary of Quantities</b>	F.A.I. RTE.	SECTION	COUNTY	TOTAL SHEETS	SHEET NO.
D:\BR\CADD plans\Winnnebago County\101214	PLA\lanq.dgn	DRAWN -	REVISED -			39	D2 MRS 2012-1	Winnnebago	10	3
PLOT SCALE = 50.0000' / 1"	CHECKED -	REVISED -	REVISED -			CONTRACT NO. 64H32			ILLINOIS FED. AID PROJECT	
PLOT DATE = Thu Oct 13 08:26:23 2011	DATE -	REVISED -	REVISED -			SCALE: _____	SHEET NO. _____ OF _____ SHEETS	STA. _____ TO STA. _____		



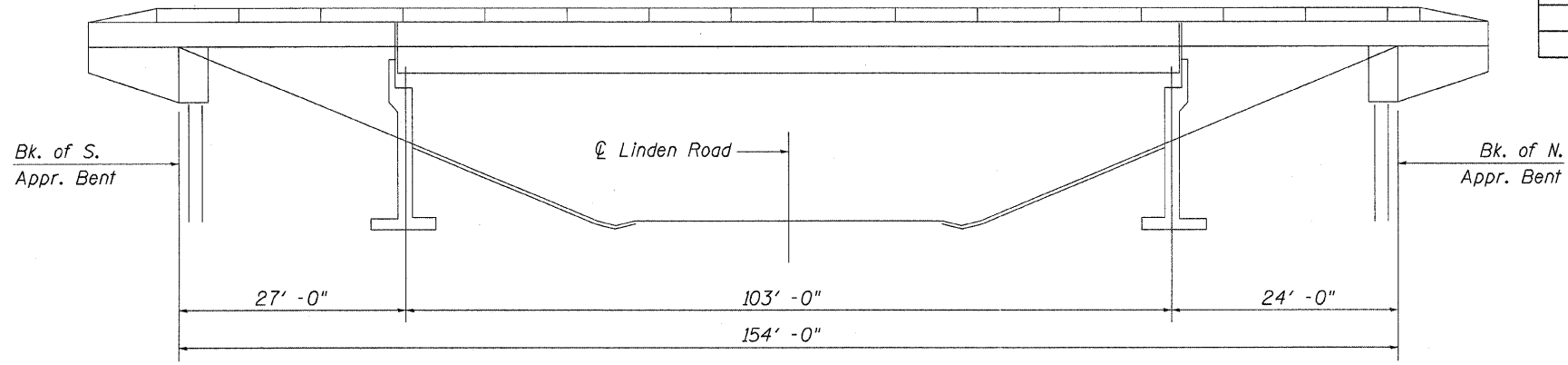
PLAN

GENERAL NOTES

Plan dimensions and details relative to existing plans are subject to nominal construction variations. The Contractor shall field verify existing dimensions and details affecting new construction and make necessary approved adjustments prior to construction or ordering of materials. Such variations shall not be cause for additional compensation for a change in scope of the work, however, the Contractor will be paid for the quantity actually furnished at the unit price bid for the work.

TOTAL BILL OF MATERIAL

	Unit	Quantity
HOT-MIX ASPHALT SURFACE REMOVAL (DECK)	Sq Yd	399
HOT-MIX ASPHALT SURFACE COURSE, MIX "D", N90	Ton	34
SHEET WATERPROOFING MEMBRANE SYSTEM	Sq Yd	399
PAINT PAVEMENT MARKING - LINE 4"	Foot	308
SILICONE JOINT SEALER	Foot	144

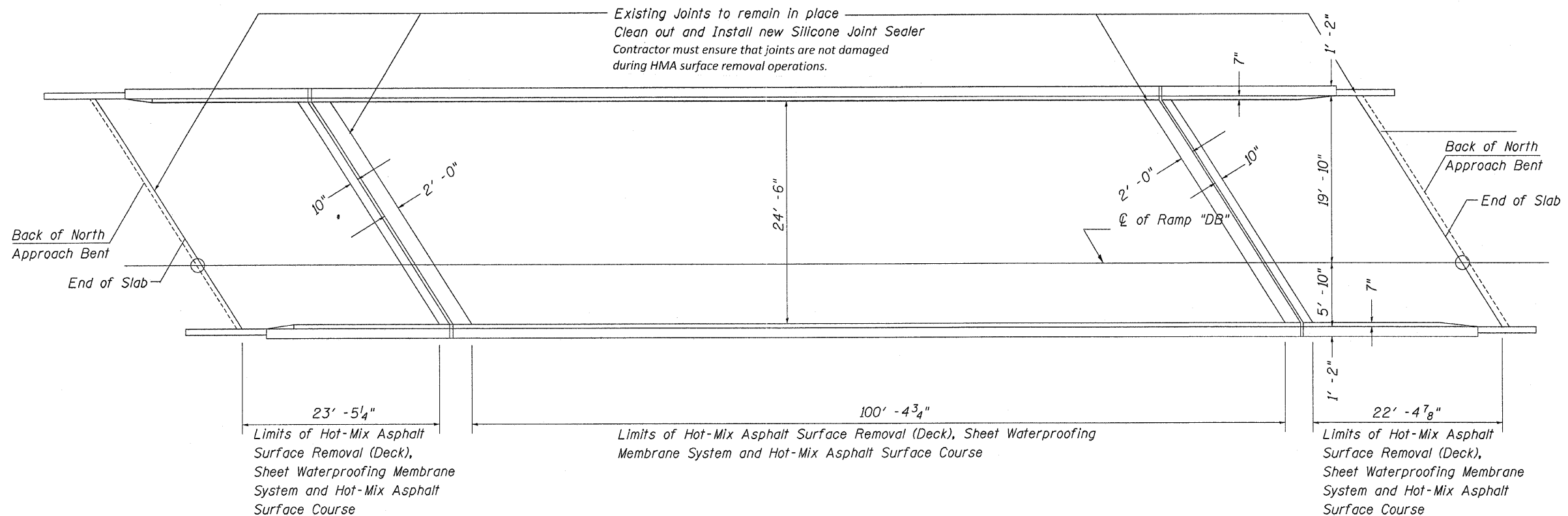


ELEVATION



*David Carl Puzev* 12/8/11  
Expires 11/30/12

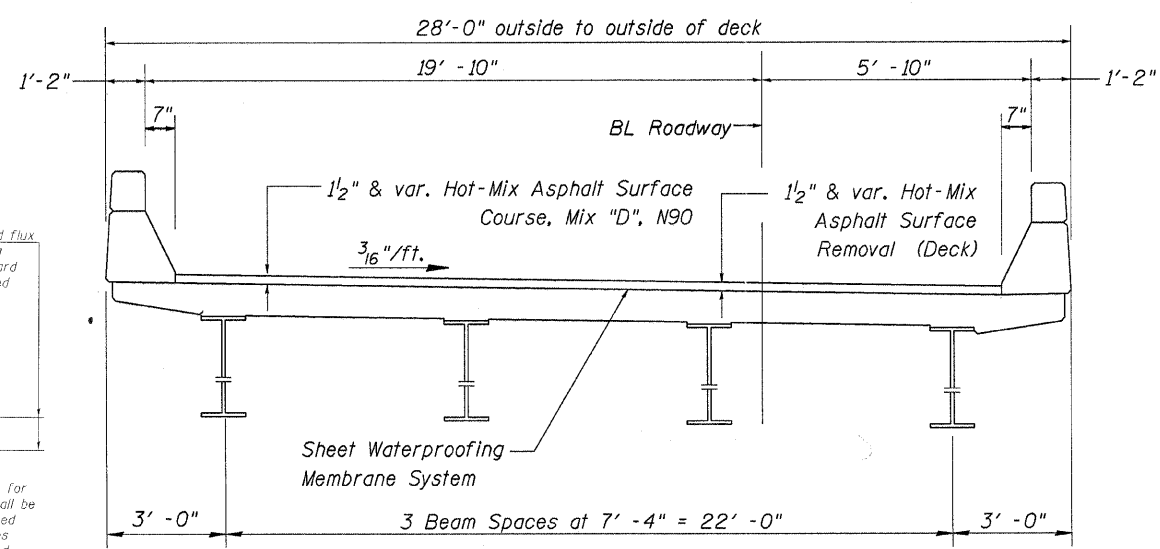
FILE NAME =	USER NAME = linkdj	DESIGNED - DJL	REVISED -	<b>STATE OF ILLINOIS DEPARTMENT OF TRANSPORTATION</b>	<b>General Plan &amp; Elevation</b>		F.A.I. RTE. 39	SECTION 02 MRS 2012-1	COUNTY Winnebago	TOTAL SHEETS 10	SHEET NO. 4	
0:\BR\CADD plans\Winnebago County\10101\PLANeng.dgn		DRAWN -	REVISED -		SCALE: _____	SHEET NO. 1 OF 3 SHEETS	STA. _____ TO STA. _____	CONTRACT NO. 64H32		ILLINOIS FED. AID PROJECT		
	PLOT SCALE = 50.0000' / 1" =	CHECKED - GGE	REVISED -									
	PLOT DATE = Thu Oct 13 08:26:47 2011	DATE -	REVISED -									



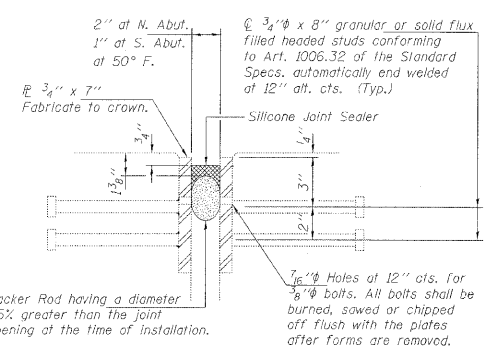
PLAN

BILL OF MATERIAL  
(Bridge)

	Unit	Quantity
<b>POLYMER CONCRETE</b>	<b>CU FT</b>	<b>5</b>
HOT-MIX ASPHALT SURFACE REMOVAL (DECK)	Sq Yd	399
HOT-MIX ASPHALT SURFACE COURSE, MIX "D", N90	Ton	34
SHEET WATERPROOFING MEMBRANE SYSTEM	Sq Yd	399
PAINT PAVEMENT MARKING - LINE 4"	Foot	308
SILICONE JOINT SEALER	Foot	130

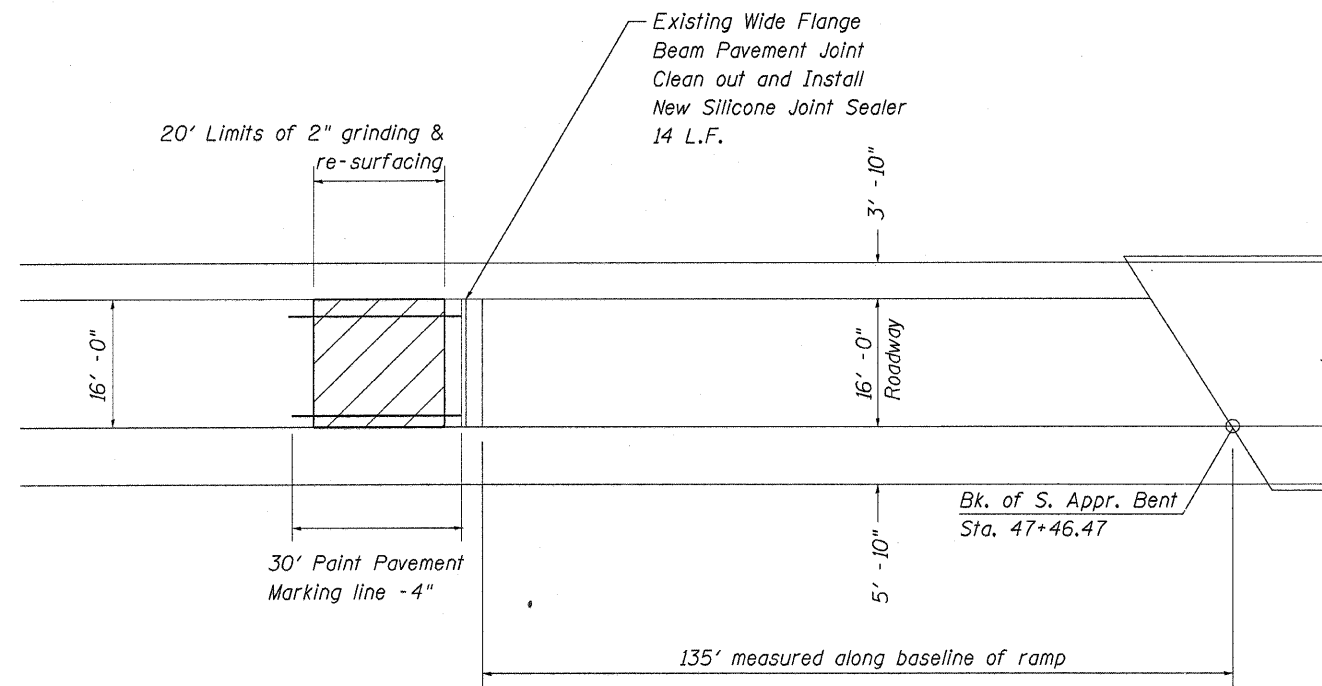


DECK CROSS SECTION

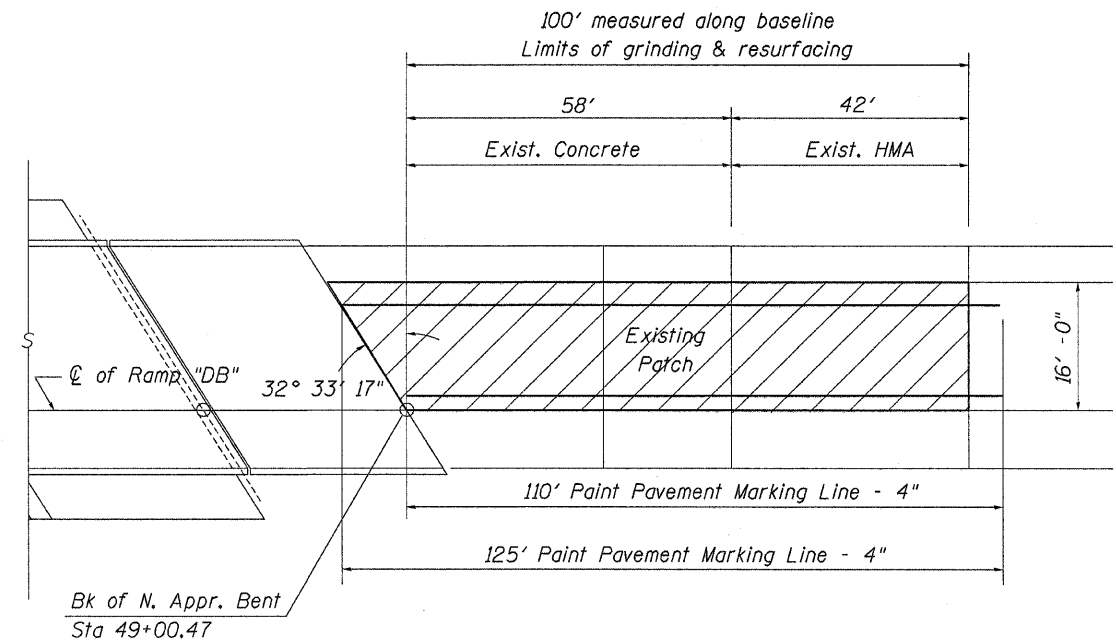


SILICONE JOINT SEALER DETAIL

FILE NAME =	USER NAME = linkdj	DESIGNED - <b>HJL</b>	REVISED - _____	<b>STATE OF ILLINOIS DEPARTMENT OF TRANSPORTATION</b>	<b>Deck Plan &amp; Cross-Section</b>	F.A.I. RTE. 39	SECTION 02 MRS 2012-1	COUNTY Winnebago	TOTAL SHEETS 10	SHEET NO. 5		
0:\BRY\CADD\plans\Winnebago County\1010140\PLANeng.dgn	PLOT SCALE = 50.0000' / in.	CHECKED - <b>SFE</b>	REVISED - _____			SCALE: _____	SHEET NO. <b>2</b> OF <b>3</b> SHEETS	STA. _____ TO STA. _____	CONTRACT NO. 64H32			
	PLOT DATE = Thu Oct 13 00:26:53 2011	DATE - _____	REVISED - _____			[ILLINOIS] FED. AID PROJECT						



SOUTH APPROACH



NORTH APPROACH

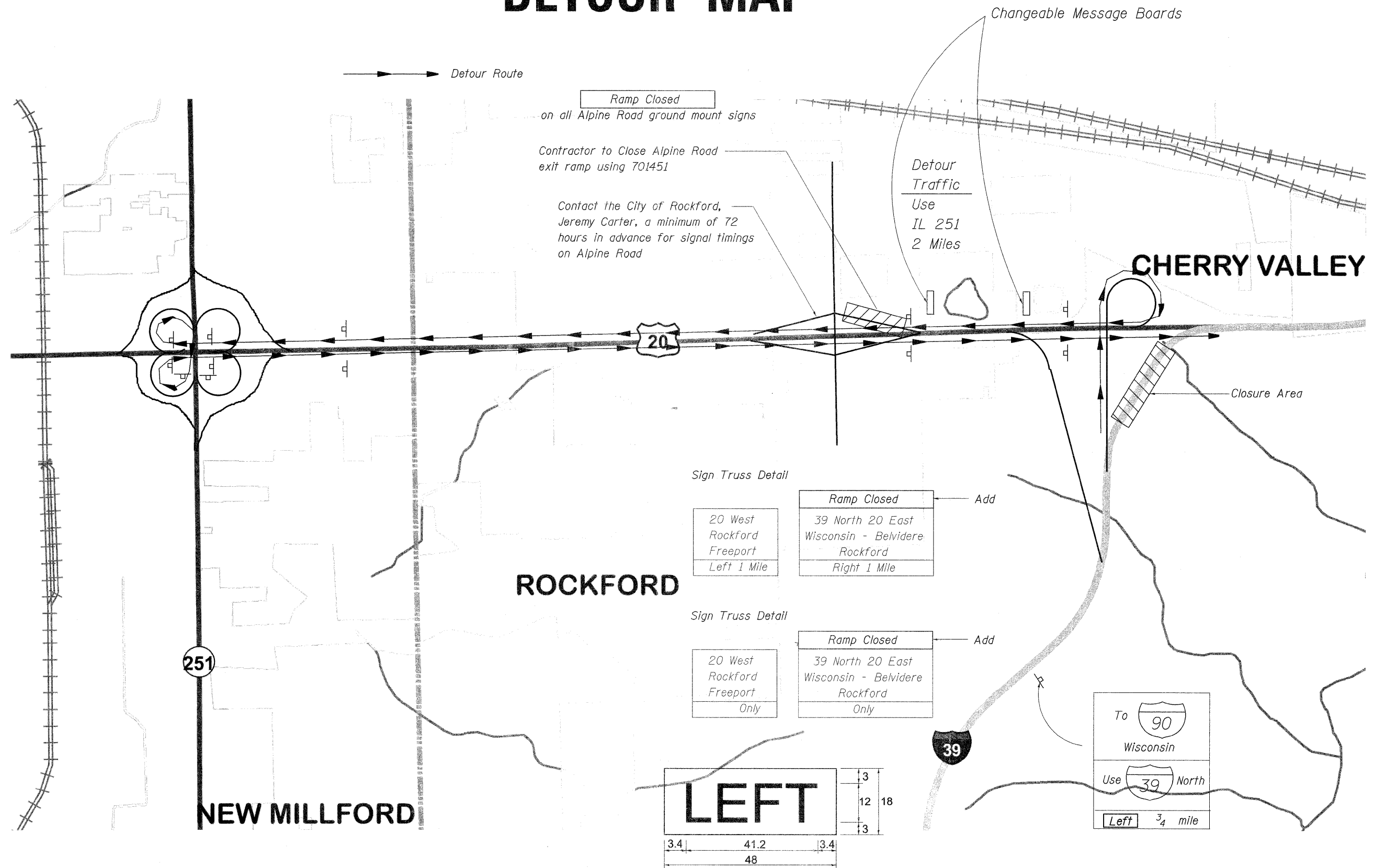
PLAN

BILL OF MATERIAL  
(Approach)

<u>Paint Pavement Marking Line - 4"</u>	
Right Edgeline (White)	Foot
South approach	30
Bridge deck	154
North Approach	110
Left Edgeline (Yellow)	
South approach	30
Bridge deck	154
North Approach	125
Total 603 Ft	

	Unit	Quantity
COLD MILLING (SPECIAL)	Sq Yd	228
HOT-MIX ASPHALT SURFACE COURSE, MIX "D", N90	Ton	27
PAINT PAVEMENT MARKING - LINE 4"	Foot	295
SILICONE JOINT SEALER	Foot	14

# DETOUR MAP



**Ramp Closed**  
on all Alpine Road ground mount signs

Contractor to Close Alpine Road exit ramp using 701451

Contact the City of Rockford, Jeremy Carter, a minimum of 72 hours in advance for signal timings on Alpine Road

Detour Traffic Use IL 251 2 Miles

Changeable Message Boards

**CHERRY VALLEY**

**ROCKFORD**

**251**

**NEW MILLFORD**

Sign Truss Detail

20 West  
Rockford  
Freeport  
Left 1 Mile

**Ramp Closed**  
39 North 20 East  
Wisconsin - Belvidere  
Rockford  
Right 1 Mile

Sign Truss Detail

20 West  
Rockford  
Freeport  
Only

**Ramp Closed**  
39 North 20 East  
Wisconsin - Belvidere  
Rockford  
Only

**LEFT**

3.4 | 41.2 | 3.4  
48

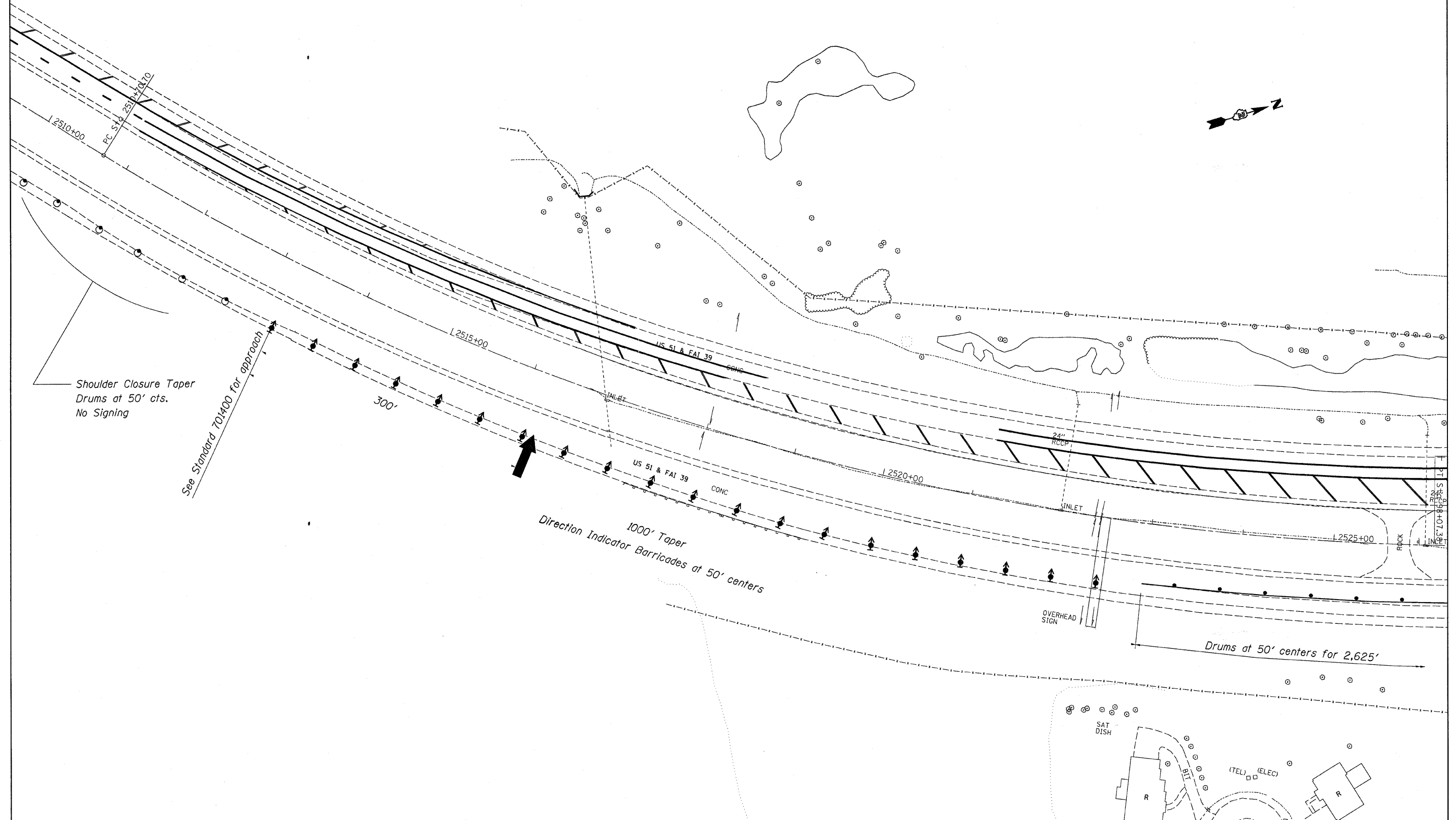
3  
12  
3

To **90**  
Wisconsin  
Use **39** North  
Left  $\frac{3}{4}$  mile

No border, White on Yellow;  
"LEFT" Black E Mod 2K

FILE NAME =	USER NAME = linkdj	DESIGNED -	REVISED -	<b>STATE OF ILLINOIS DEPARTMENT OF TRANSPORTATION</b>	<b>Detour Map</b>	F.A.I. RTE.	SECTION	COUNTY	TOTAL SHEETS	SHEET NO.	
D:\BR\CADD plans\Winnebago County\101014	PLANeng.dgn	DRAWN -	REVISED -			39	D2 MRS 2012-1	Winnebago	10	7	
PLOT SCALE = 50,0000' / in.		CHECKED -	REVISED -			CONTRACT NO. 64H32					
PLOT DATE = Wed Nov 02 08:56:56 2011		DATE -	REVISED -			ILLINOIS FED. AID PROJECT					

# TRAFFIC CONTROL PLAN

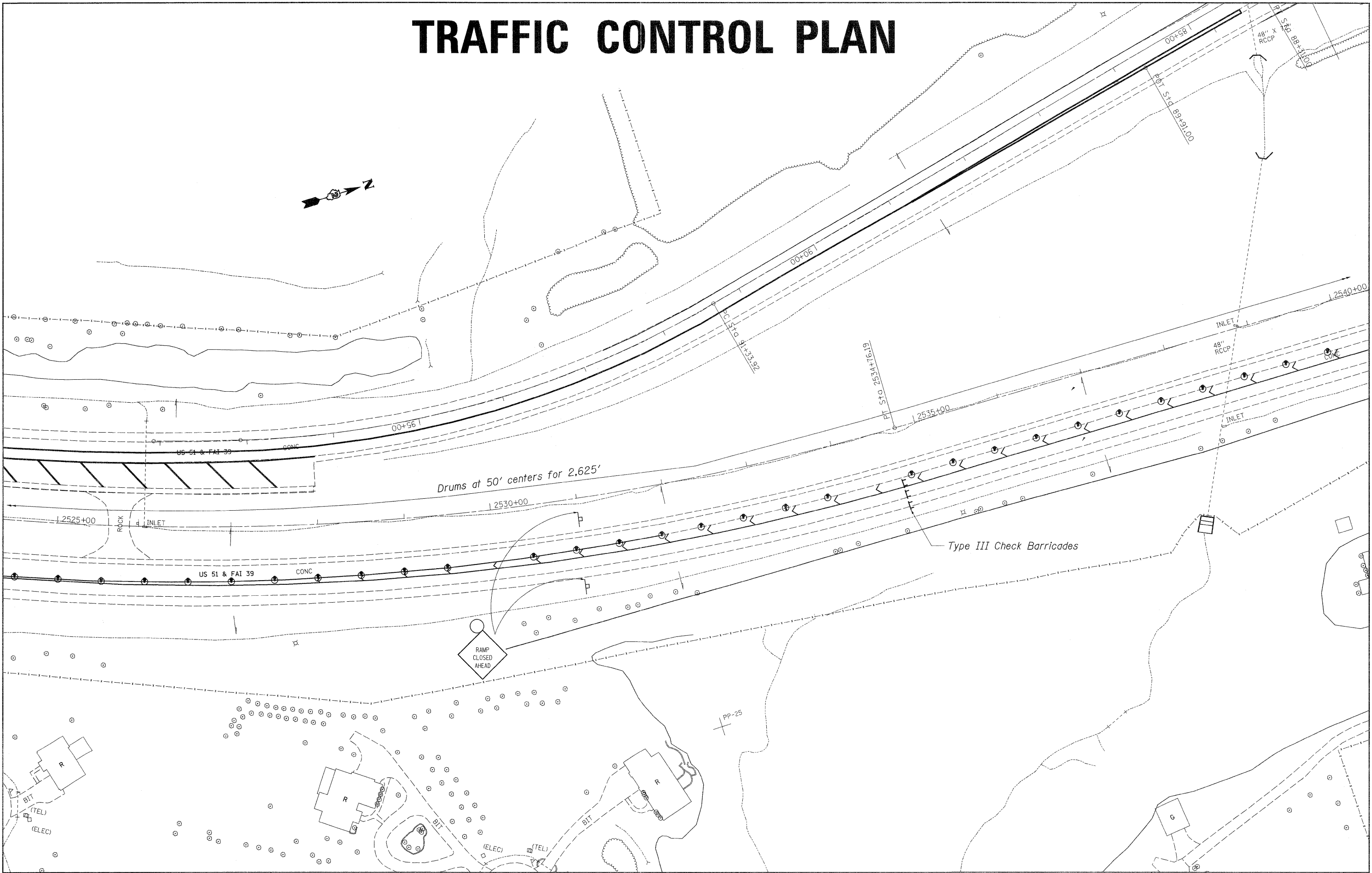


FILE NAME = G:\BRY\CADD plans\Winnebago County\10101\02\PLANeng.dgn	USER NAME = linkdj	DESIGNED -	REVISED -	<b>STATE OF ILLINOIS DEPARTMENT OF TRANSPORTATION</b>	<b>Detour Plan Sheet 1 of 3</b>	F.A.I. RTE. 39	SECTION D2 MRS 2012-1	COUNTY Winnebago	TOTAL SHEETS 10	SHEET NO. 8
	PLOT SCALE = 50,0000' / in.	CHECKED -	REVISED -			CONTRACT NO. 64H32				
	PLOT DATE = Thu Oct 13 08:32:28 2011	DATE -	REVISED -			[ILLINOIS] FED. AID PROJECT				

SCALE: \_\_\_\_\_ SHEET NO. \_\_\_\_\_ OF \_\_\_\_\_ SHEETS STA. \_\_\_\_\_ TO STA. \_\_\_\_\_

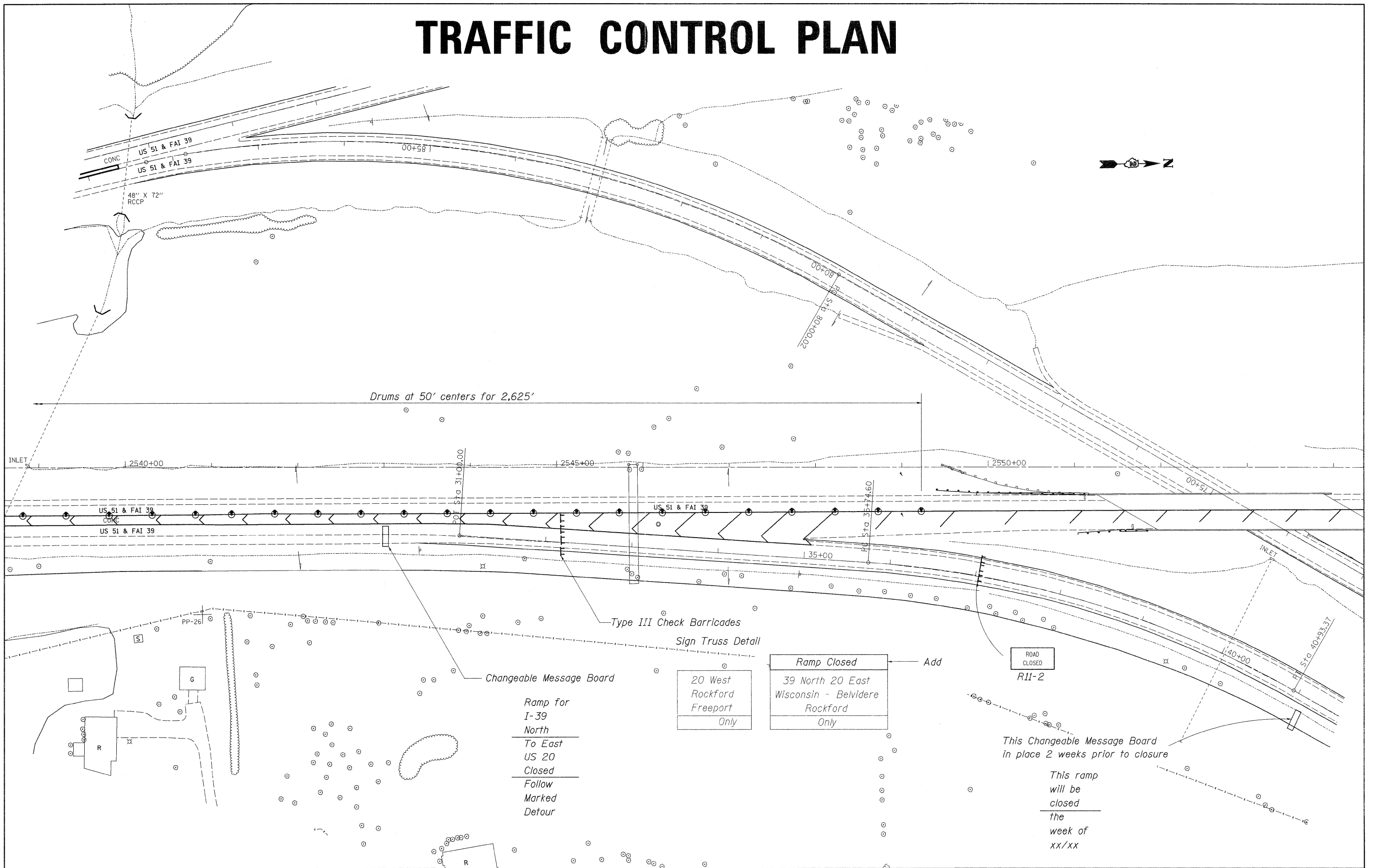


# TRAFFIC CONTROL PLAN



FILE NAME =	USER NAME = linkdj	DESIGNED -	REVISED -	<b>STATE OF ILLINOIS DEPARTMENT OF TRANSPORTATION</b>	<b>Detour Plan Sheet 2 of 3</b>	F.A.I. RTE.	SECTION	COUNTY	TOTAL SHEETS	SHEET NO.	
D:\BR\CADD\plans\Winnebago County\10101\0\PLANeng.dgn		DRAWN -	REVISED -			39	D2 MRS 2012-1	Winnebago	10	9	
PLOT SCALE = 50.0000' / 1" =		CHECKED -	REVISED -			CONTRACT NO. 64H32					
PLOT DATE = Thu Oct 13 09:35:51 2011		DATE -	REVISED -			ILLINOIS FED. AID PROJECT					

# TRAFFIC CONTROL PLAN



FILE NAME =	USER NAME = lmkdj	DESIGNED -	REVISED -	<b>STATE OF ILLINOIS DEPARTMENT OF TRANSPORTATION</b>	<b>Detour Plan Sheet 3 of 3</b>	F.A.I. RTE.	SECTION	COUNTY	TOTAL SHEETS	SHEET NO.	
D:\BRY\CADD\plans\Winnebago County\101014\PLANeng.dgn	PLANTeng.dgn	DRAWN -	REVISED -			39	D2 MRS 2012-1	Winnebago	10	10	
PLLOT SCALE = 50.0000' / in.		CHECKED -	REVISED -			CONTRACT NO. 64H32					
PLLOT DATE = Thu Oct 13 09:35:38 2011		DATE -	REVISED -			ILLINOIS FED. AID PROJECT					