

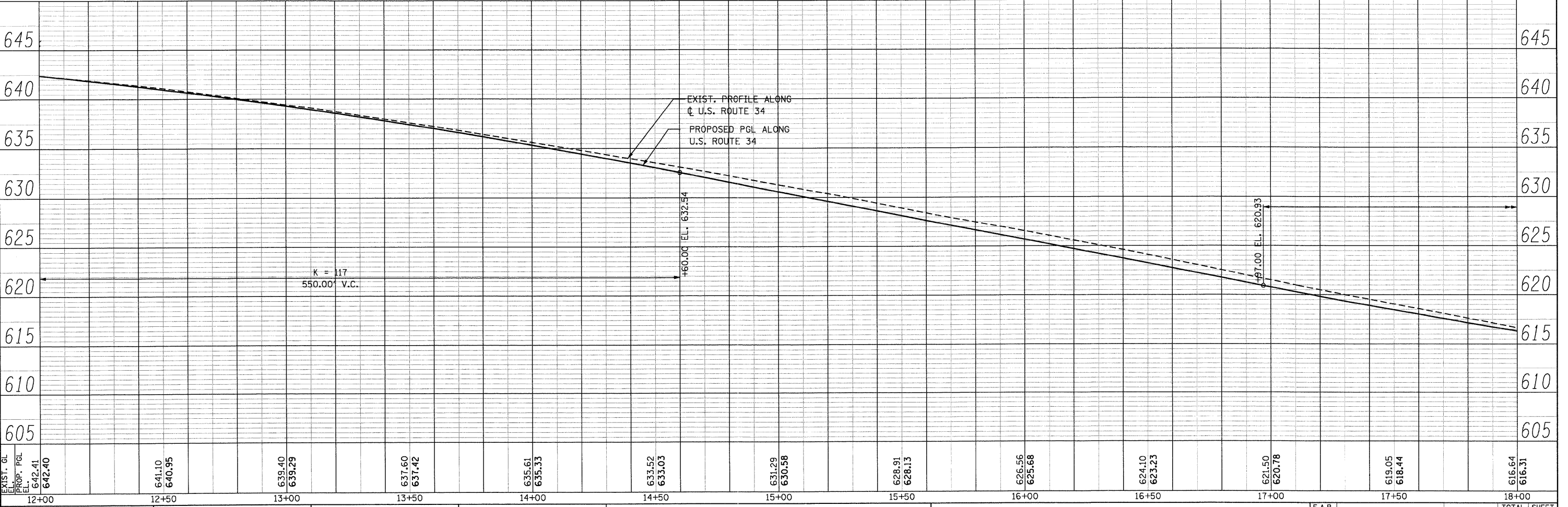
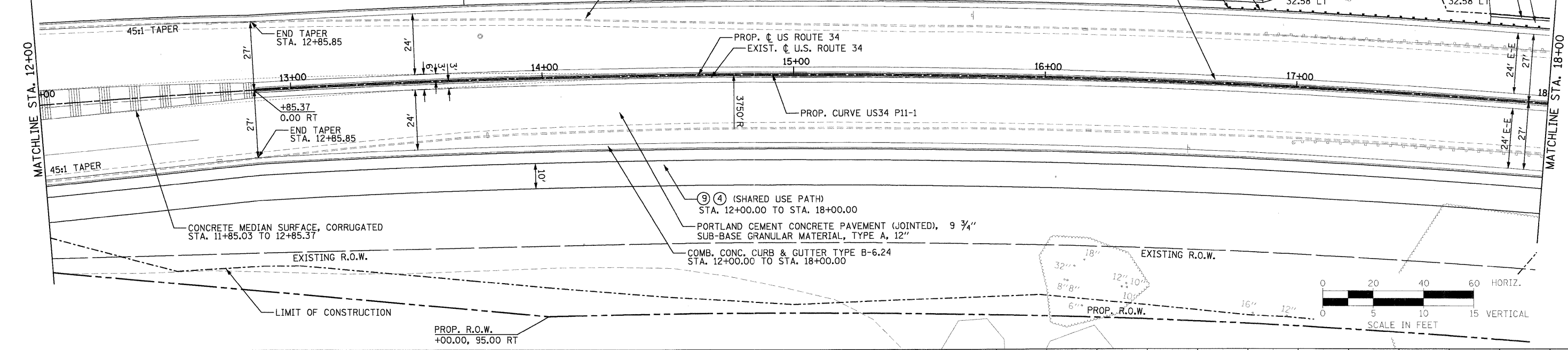
PLAN	SURVEYED	BY	DATE
	NOTED		
	CHECKED		
	RT. OF WAY CHECKED		
	NO. _____		
	DATE FILE NAME		

PROFILE	SURVEYED	BY	DATE
	NOTED		
	CHECKED		
	STRUCTURE NOTATIONS CHECKED		
	NO. _____		

LEGEND:

- ④ AGGREGATE BASE COURSE, TYPE A, 6"
- ⑨ HOT-MIX ASPHALT SURFACE COURSE, MIX "C", N30 - 2"
- ⑳ AGGREGATE SURFACE COURSE, TYPE B, 8"
- ㉑ HOT-MIX ASPHALT SURFACE COURSE, MIX "C", N50 - 3"
- ㉒ AGGREGATE BASE COURSE, TYPE A, 8"
- ㉓ P.C.C. DRIVEWAY PAVEMENT, 8"
- ㉔ P.C.C. DRIVEWAY PAVEMENT, 6"

- DEPRESSED CURB
- HMA SURFACE REMOVAL BUTT JOINT
- PORTLAND CEMENT CONCRETE PAVEMENT (JOINTED), 9 3/4"
- SUB-BASE GRANULAR MATERIAL, TYPE A, 12"
- PROPOSED RETAINING WALL STA. 13+70.00 TO STA. 16+85.00
- COMB. CONC. CURB & GUTTER TYPE B-6.24 STA. 12+00.00 TO STA. 18+00.00
- CONCRETE MEDIAN SURFACE, 4" AGGREGATE BASE COURSE, TYPE A, 6" STA. STA. 13+70.00 TO STA. 16+85.00
- LIMIT OF CONSTRUCTION
- STEEL PLATE BEAM GUARD RAIL STA. 16+84.99 TO STA. 19+27.97
- TRAFFIC BARRIER TERMINAL TY 1 SPL (TANGENT) - 1 EA. STA. 16+71.70 TO STA. 17+21.70
- CONCRETE MEDIAN SURFACE, 4" AGGREGATE BASE COURSE, TYPE A, 6" STA. STA. 17+75.00 TO STA. 19+57.29
- PROP. RETAINING WALL STA. 17+75.00 TO STA. 19+57.72



PB Americas, Inc.
 230 WEST MONROE STREET,
 SUITE 900
 CHICAGO, IL 60606
 (312)782-8150

FILE NAME = D366985-shr-2plnprf-rural.dgn
 DESIGNED - MMS
 DRAWN - MMS
 CHECKED - KJB
 DATE - 08-18-2011

REVISED -
 REVISED -
 REVISED -
 REVISED -

STATE OF ILLINOIS
DEPARTMENT OF TRANSPORTATION

U.S. 34 PLAN & PROFILE
 SCALE: 1"=20' Horiz
 PNP - 2 OF 27
 STA. 12+00 TO STA. 18+00

F.A.P. RTE.	SECTION	COUNTY	TOTAL SHEETS	SHEET NO.
591	13R-214R-1 & BR-1(1)15R-1	KENDALL	429	59
FINAL SUBMITTAL		CONTRACT NO. 66985		
[ILLINOIS] FED. AID PROJECT				