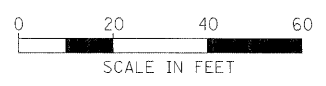
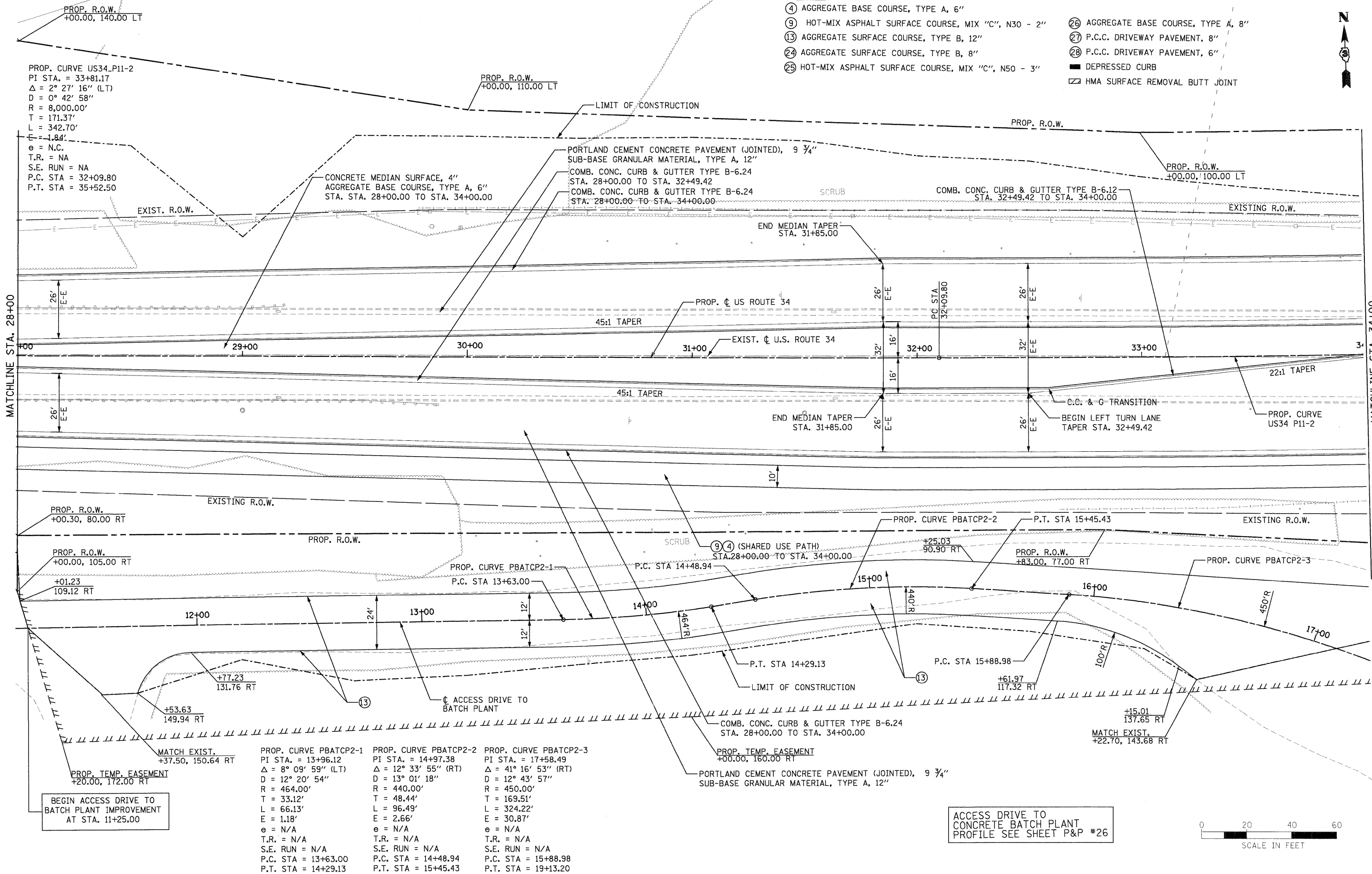


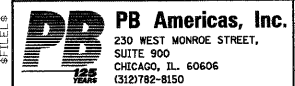
LEGEND:

- ④ AGGREGATE BASE COURSE, TYPE A, 6"
- ⑨ HOT-MIX ASPHALT SURFACE COURSE, MIX "C", N30 - 2"
- ⑬ AGGREGATE SURFACE COURSE, TYPE B, 12"
- ⑲ AGGREGATE SURFACE COURSE, TYPE B, 8"
- ⑳ HOT-MIX ASPHALT SURFACE COURSE, MIX "C", N50 - 3"
- ㉔ AGGREGATE BASE COURSE, TYPE A, 8"
- ㉕ P.C.C. DRIVEWAY PAVEMENT, 8"
- ㉖ P.C.C. DRIVEWAY PAVEMENT, 6"
- DEPRESSED CURB
- ▨ HMA SURFACE REMOVAL BUTT JOINT



PROP. CURVE PBATCP2-1	PROP. CURVE PBATCP2-2	PROP. CURVE PBATCP2-3
PI STA. = 13+96.12	PI STA. = 14+97.38	PI STA. = 17+58.49
Δ = 8° 09' 59" (LT)	Δ = 12° 33' 55" (RT)	Δ = 41° 16' 53" (RT)
D = 12° 20' 54"	D = 13° 01' 18"	D = 12° 43' 57"
R = 464.00'	R = 440.00'	R = 450.00'
T = 33.12'	T = 48.44'	T = 169.51'
L = 66.13'	L = 96.49'	L = 324.22'
E = 1.18'	E = 2.66'	E = 30.87'
e = N/A	e = N/A	e = N/A
T.R. = N/A	T.R. = N/A	T.R. = N/A
S.E. RUN = N/A	S.E. RUN = N/A	S.E. RUN = N/A
P.C. STA = 13+63.00	P.C. STA = 14+48.94	P.C. STA = 15+88.98
P.T. STA = 14+29.13	P.T. STA = 15+45.43	P.T. STA = 19+13.20

ACCESS DRIVE TO CONCRETE BATCH PLANT PROFILE SEE SHEET P&P #26



FILE NAME = D366989-sh1-5pln.dgn
 DESIGNED - MMS
 DRAWN - MMS
 CHECKED - KJB
 DATE - 08-18-2011

REVISIONS:
 REVISIONS -
 REVISIONS -
 REVISIONS -
 REVISIONS -

**STATE OF ILLINOIS
 DEPARTMENT OF TRANSPORTATION**

U.S. 34 PLAN & PROFILE

SCALE: 1"=20' Horz | PNP - 5A OF 27 | STA. 28+00 TO STA. 34+00

F.A.P. RTE.	SECTION	COUNTY	TOTAL SHEETS	SHEET NO.
591	13R-2;14R-1 & BR-1(D);15R-1	KENDALL	429	64
FINAL SUBMITTAL			CONTRACT NO. 66985	
ILLINOIS FED. AID PROJECT				