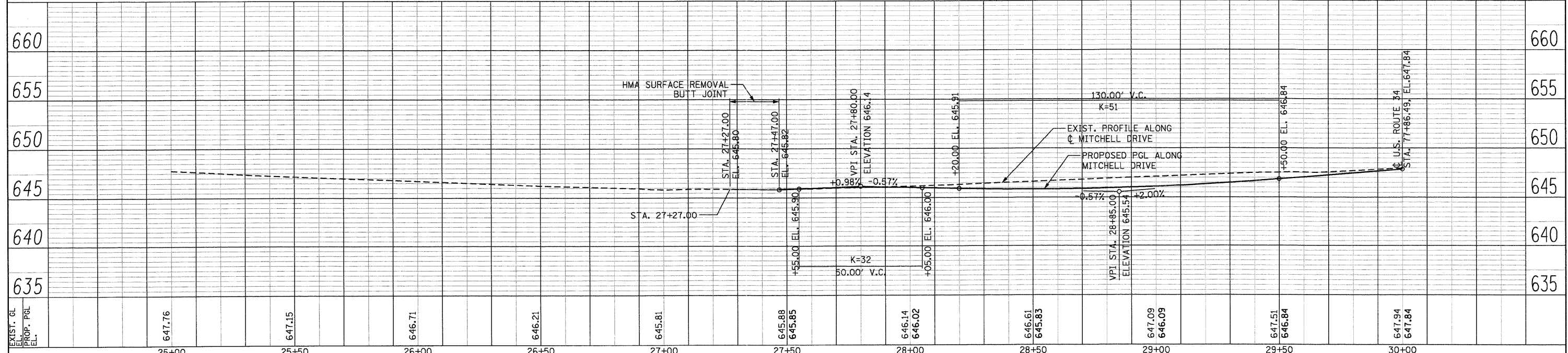
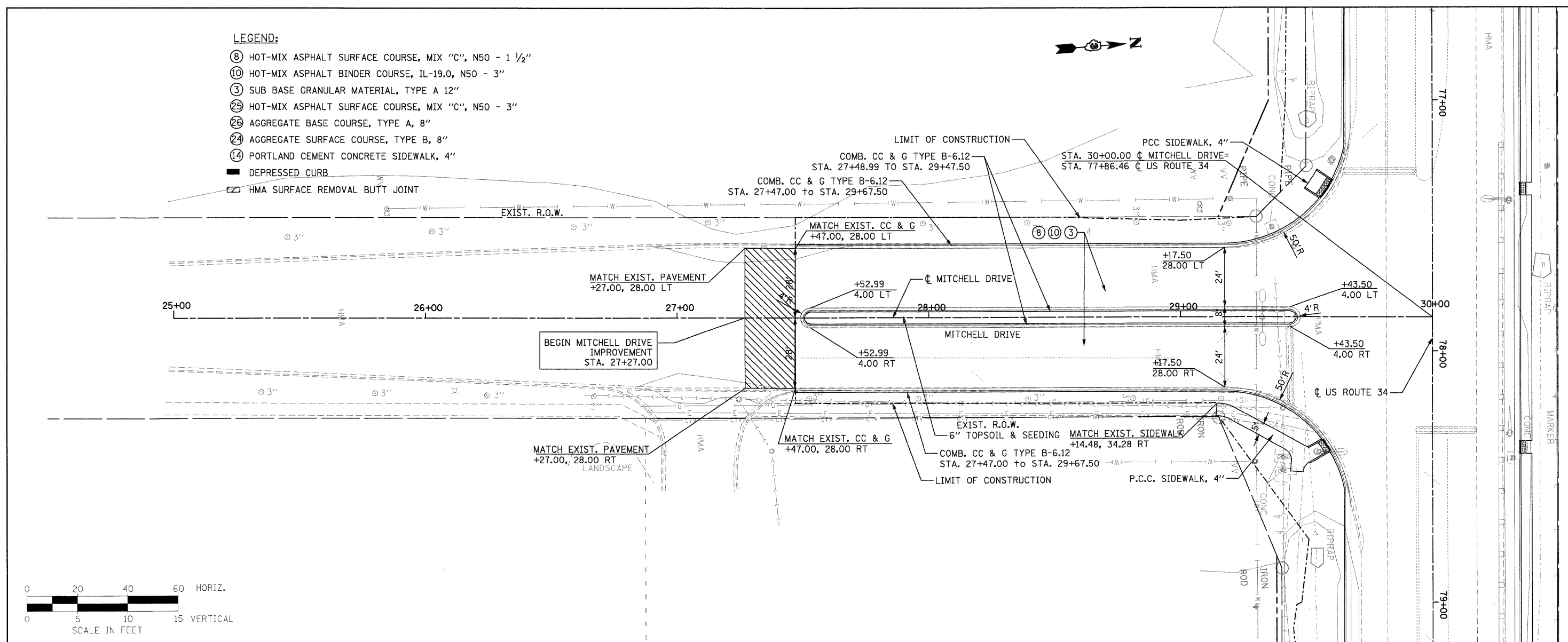
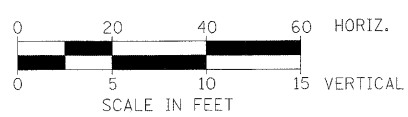


- LEGEND:**
- ⑧ HOT-MIX ASPHALT SURFACE COURSE, MIX "C", N50 - 1 1/2"
  - ⑩ HOT-MIX ASPHALT BINDER COURSE, IL-19.0, N50 - 3"
  - ③ SUB BASE GRANULAR MATERIAL, TYPE A 12"
  - ②5 HOT-MIX ASPHALT SURFACE COURSE, MIX "C", N50 - 3"
  - ②6 AGGREGATE BASE COURSE, TYPE A, 8"
  - ②4 AGGREGATE SURFACE COURSE, TYPE B, 8"
  - ⑭ PORTLAND CEMENT CONCRETE SIDEWALK, 4"
  - DEPRESSED CURB
  - ▨ HMA SURFACE REMOVAL BUTT JOINT

PLAN	SURVEYED	DATE
	PLOTTED	
	GRADED	
	CHECKED	
	REVISIONS	
	NO. OF WAY CHECKED	
	CADD FILE NAME	
	NO.	

PROFILE	SURVEYED	DATE
	PLOTTED	
	GRADED	
	CHECKED	
	REVISIONS	
	NO. OF WAY CHECKED	
	STRUCTURE NOTATIONS CHECKED	
	NO.	



**PB Americas, Inc.**  
230 WEST MONROE STREET,  
SUITE 900  
CHICAGO, IL 60606  
(312)782-8150

FILE NAME = D366985-shr-24pInp.dgn  
DESIGNED - MMS  
DRAWN - MMS  
CHECKED - KJB  
DATE - 08-18-2011

REVISIONS  
REVISED -  
REVISED -  
REVISED -  
REVISED -

**STATE OF ILLINOIS  
DEPARTMENT OF TRANSPORTATION**

**CROSS ROAD PLAN & PROFILE  
MITCHELL DRIVE**  
SCALE: 1"=20' Horz | PNP - 24 OF 27 | STA. TO STA.

F.A.P. RTE.	SECTION	COUNTY	TOTAL SHEETS	SHEET NO.
591	13R-214R-1 & BR-1(0)15R-1	KENDALL	429	85
FINAL SUBMITTAL			CONTRACT NO. 66985	
ILLINOIS FED. AID PROJECT				