

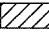



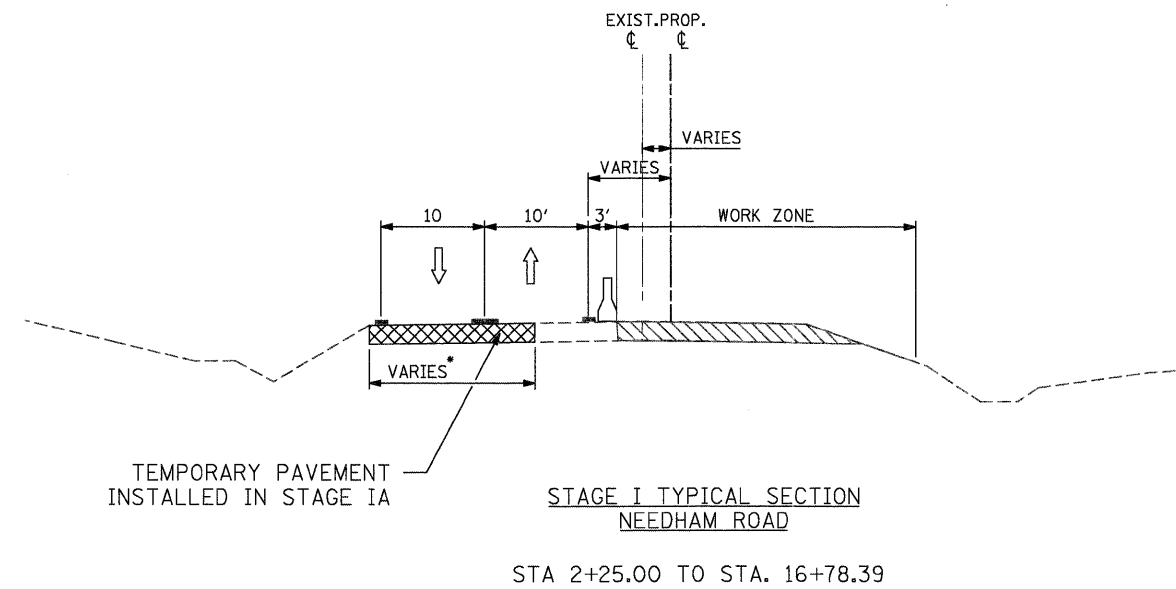
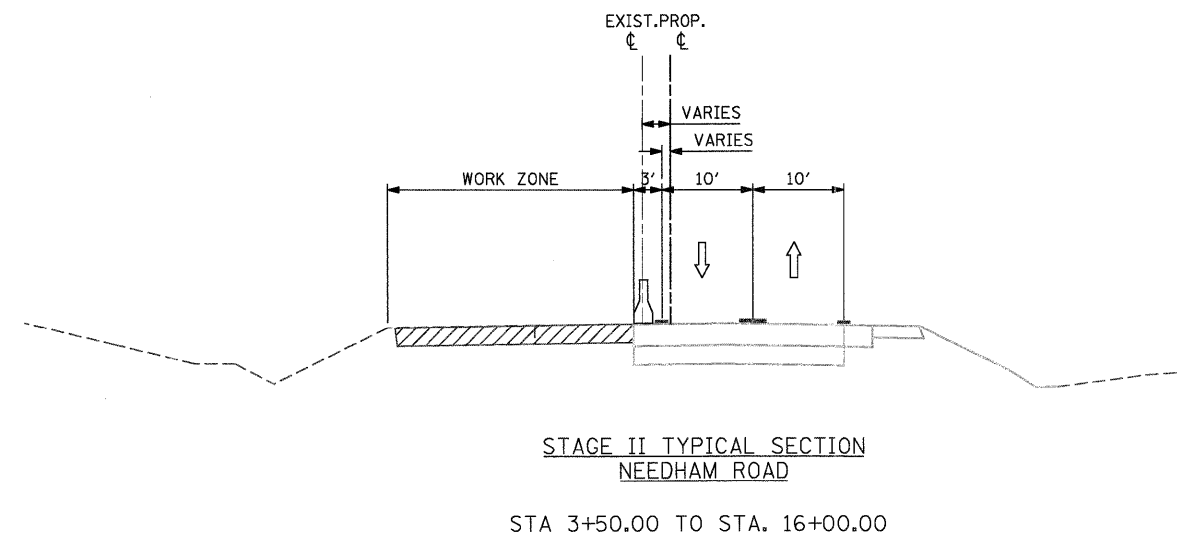


LEGEND

-  VERTICAL PANELS AT 50' SPACING IN CURVES AND 100' SPACING IN TANGENTS
-  DRUMS W/ STEADY BURN LIGHTS AT 25' C-C IN TAPERS AND 50' C-C IN TANGENTS
-  WORK ZONE
-  TEMPORARY PAVEMENT (HMA BINDER IL-19mm) 9"
-  TRAFFIC FLOW ARROW
-  TEMPORARY CONCRETE BARRIER



* 0' TO 20' FROM STA. 2+25.00 TO STA. 3+85.55
 20' FROM 3+85.55 TO STA. 5+92.45
 20' TO 0' FROM 5+92.45 TO STA. 9+35.32
 20' FROM 10+05.89 TO STA. 15+55.07
 20' TO 0' FROM 15+55.07 TO STA. 16+78.39



FILE NAME = D366985-MOT-typical.dgn	DESIGNED - DM	REVISED -
PLOT SCALE =	DRAWN - MMS	REVISED -
PLOT DATE = 19-AUG-2011 08:16	CHECKED - KJB	REVISED -
	DATE - 08-18-2011	REVISED -

**SUGGESTED MAINTENANCE OF TRAFFIC
TYPICAL SECTIONS**

SCALE:	MOT - 6 OF 66	STA. TO STA.
--------	---------------	--------------

F.A.P. RTE.	SECTION	COUNTY	TOTAL SHEETS	SHEET NO.
591	13R-2;14R-1 & BR-1(0);15R-1	KENDALL	429	94
FINAL SUBMITTAL			CONTRACT NO. 66985	
ILLINOIS FED. AID PROJECT				