

LEGEND

- ① TEMP PVMT MARKING, LINE 4" (WHITE)
- ② TEMP PVMT MARKING, LINE 4" (YELLOW)
- ③ TEMP PVMT MARKING, LINE 4" (DOUBLE YELLOW)
- ④ TEMP PVMT MARKING, LINE 12" (YELLOW)
- ⑤ TEMP PVMT MARKING, LINE 8" (WHITE)
- ⑥ TEMP PVMT MARKING, LINE 8" (2' DASH-6' SKIP WHITE)
- ⑦ TEMP PVMT MARKING, LINE 24" (WHITE)

TEMPORARY PAVEMENT (HMA BINDER IL-19mm) 9"

↑ TRAFFIC FLOW ARROW

TEMPORARY CONCRETE BARRIER
↓ SIGN

○ BARRICADE TYPE II OR DRUM WITH STEADY BURN MONODIRECTIONAL LIGHT @ 50' C-C ON TAPER AND 100' C-C ON TANGENT OR AS SHOWN ON THE PLAN

TT BARRICADE TYPE III WITH FLASHING MONODIRECTIONAL LIGHTS

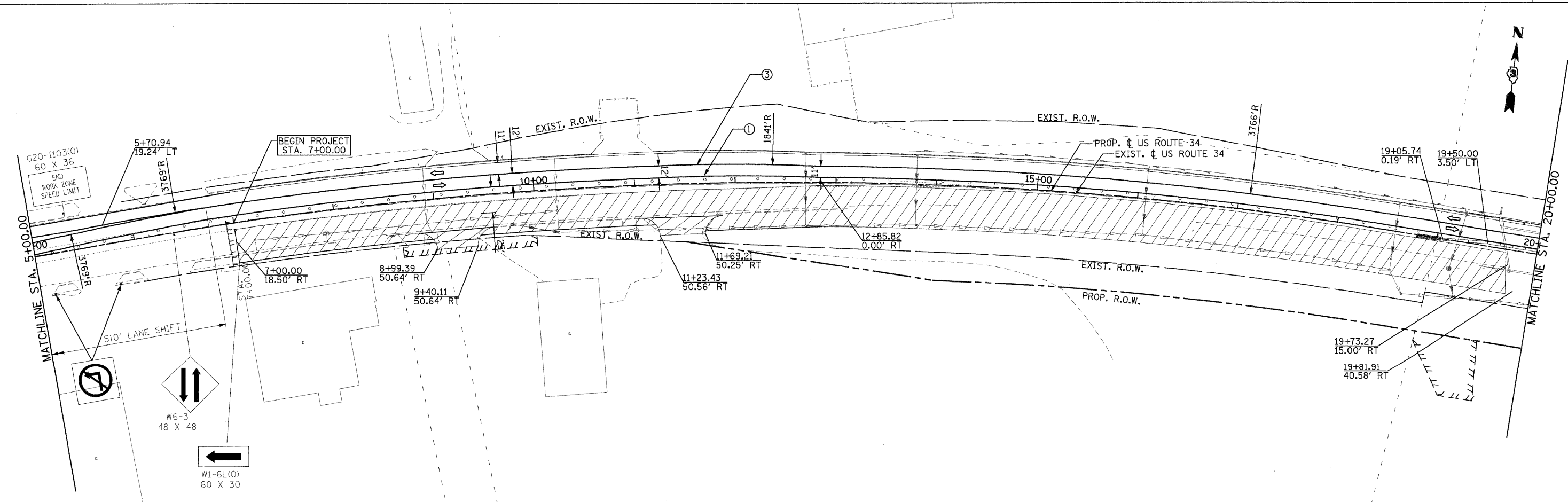
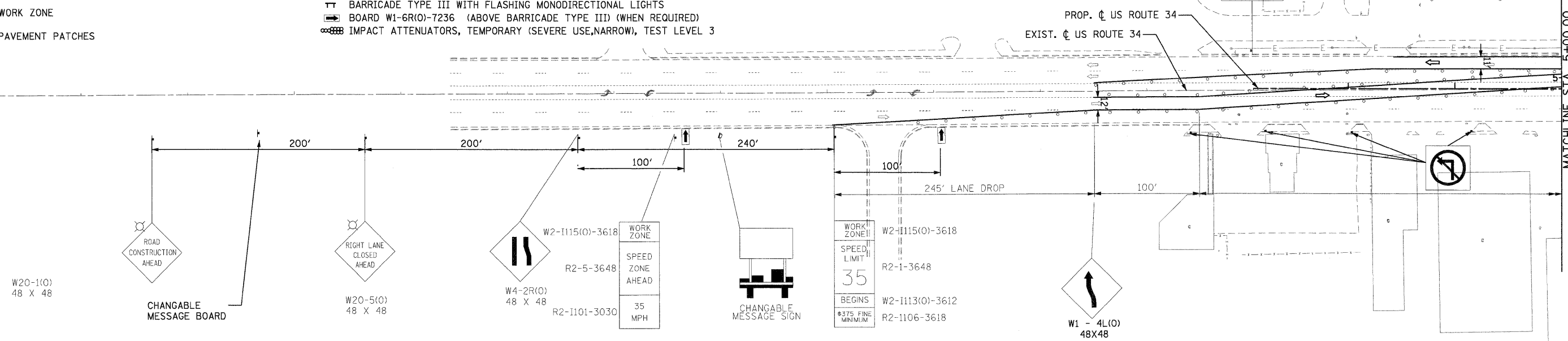
BOARD W1-6R(O)-7236 (ABOVE BARRICADE TYPE II) (WHEN REQUIRED)

IMPACT ATTENUATORS, TEMPORARY (SEVERE USE, NARROW), TEST LEVEL 3

VERTICAL PANELS AT 50' SPACING IN CURVES AND 100' SPACING IN TANGENTS

WORK ZONE

PAVEMENT PATCHES



PB Americas, Inc.
230 WEST MONROE STREET,
SUITE 900
CHICAGO, IL 60606
(312)782-8150

FILE NAME = D366785-mot1101.dgn
DESIGNED - DM
DRAWN - MMS
CHECKED - KJB
DATE - 08-18-2011

REVISED -
REVISED -
REVISED -
REVISED -

**STATE OF ILLINOIS
DEPARTMENT OF TRANSPORTATION**

**SUGGESTED MAINTENANCE OF TRAFFIC
US ROUTE 34 - STAGE II**
SCALE: 1" = 50'
MOT - 17 OF 66
STA. BEGIN TO STA. 20+00

| F.A.P. RTE. | SECTION | COUNTY | TOTAL SHEETS | SHEET NO. |
|---------------------------|---------------------------|---------|--------------------|-----------|
| 591 | 13R-2;14R-1 & BR-10;15R-1 | KENDALL | 429 | 105 |
| FINAL SUBMITTAL | | | CONTRACT NO. 66985 | |
| ILLINOIS FED. AID PROJECT | | | | |