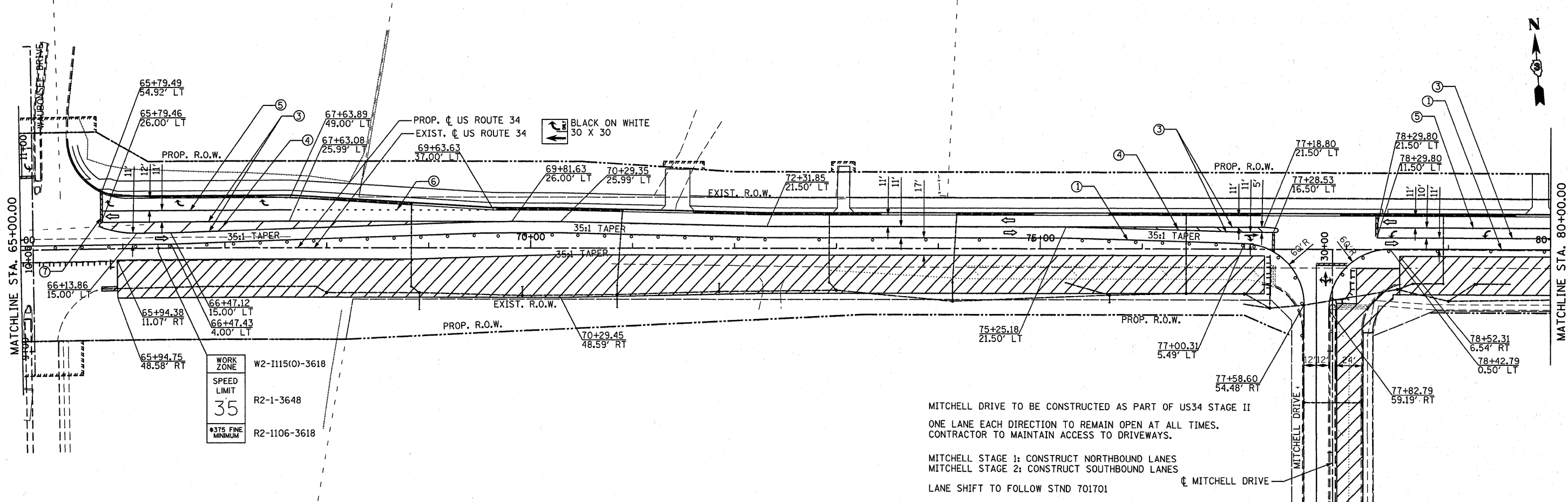
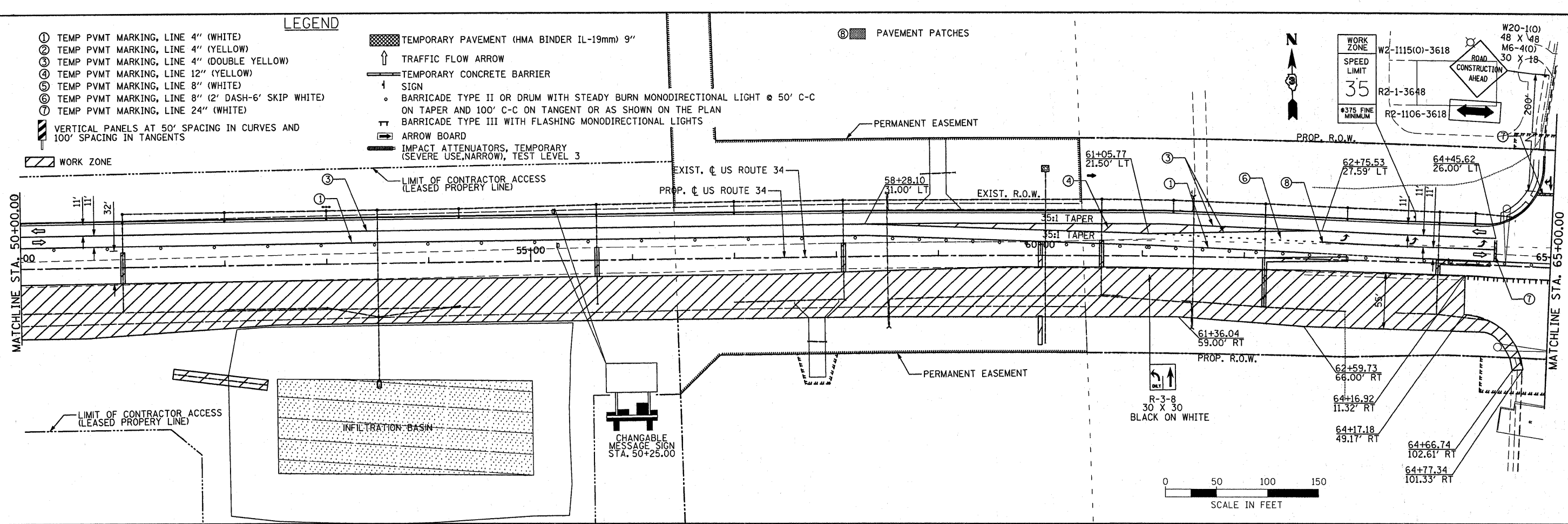


- LEGEND**
- ① TEMP PVMT MARKING, LINE 4" (WHITE)
  - ② TEMP PVMT MARKING, LINE 4" (YELLOW)
  - ③ TEMP PVMT MARKING, LINE 4" (DOUBLE YELLOW)
  - ④ TEMP PVMT MARKING, LINE 12" (YELLOW)
  - ⑤ TEMP PVMT MARKING, LINE 8" (WHITE)
  - ⑥ TEMP PVMT MARKING, LINE 8" (2' DASH-6' SKIP WHITE)
  - ⑦ TEMP PVMT MARKING, LINE 24" (WHITE)
  - VERTICAL PANELS AT 50' SPACING IN CURVES AND 100' SPACING IN TANGENTS

- TEMPORARY PAVEMENT (HMA BINDER IL-19mm) 9"
- TRAFFIC FLOW ARROW
- TEMPORARY CONCRETE BARRIER
- SIGN
- BARRICADE TYPE II OR DRUM WITH STEADY BURN MONODIRECTIONAL LIGHT @ 50' C-C ON TAPER AND 100' C-C ON TANGENT OR AS SHOWN ON THE PLAN
- BARRICADE TYPE III WITH FLASHING MONODIRECTIONAL LIGHTS
- ARROW BOARD
- IMPACT ATTENUATORS, TEMPORARY (SEVERE USE, NARROW), TEST LEVEL 3

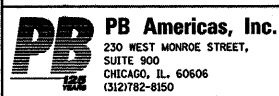
PAVEMENT PATCHES



MITCHELL DRIVE TO BE CONSTRUCTED AS PART OF US34 STAGE II  
 ONE LANE EACH DIRECTION TO REMAIN OPEN AT ALL TIMES.  
 CONTRACTOR TO MAINTAIN ACCESS TO DRIVEWAYS.

MITCHELL STAGE 1: CONSTRUCT NORTHBOUND LANES  
 MITCHELL STAGE 2: CONSTRUCT SOUTHBOUND LANES

LANE SHIFT TO FOLLOW STND 701701



|            |                   |
|------------|-------------------|
| FILE NAME  | = duncanbd        |
| PLOT SCALE | = 50.0000' / 1" = |
| PLOT DATE  | = 11/22/2011      |

|          |              |         |                  |
|----------|--------------|---------|------------------|
| DESIGNED | - DM         | REVISED | - BDD 11/22/2011 |
| DRAWN    | - MMS        | REVISED | -                |
| CHECKED  | - KJB        | REVISED | -                |
| DATE     | - 08-18-2011 | REVISED | -                |

**STATE OF ILLINOIS  
 DEPARTMENT OF TRANSPORTATION**

**SUGGESTED MAINTENANCE OF TRAFFIC  
 US ROUTE 34 - STAGE II**

SCALE: 1" = 50' MOT - 19 OF 66 STA. 50+00 TO STA. 80+00

| F.A.P. RTE.               | SECTION                     | COUNTY  | TOTAL SHEETS       | SHEET NO. |
|---------------------------|-----------------------------|---------|--------------------|-----------|
| 591                       | 13R-2;14R-1 & BR-1(1);15R-1 | KENDALL | 429                | 107       |
| FINAL SUBMITTAL           |                             |         | CONTRACT NO. 66985 |           |
| ILLINOIS FED. AID PROJECT |                             |         |                    |           |