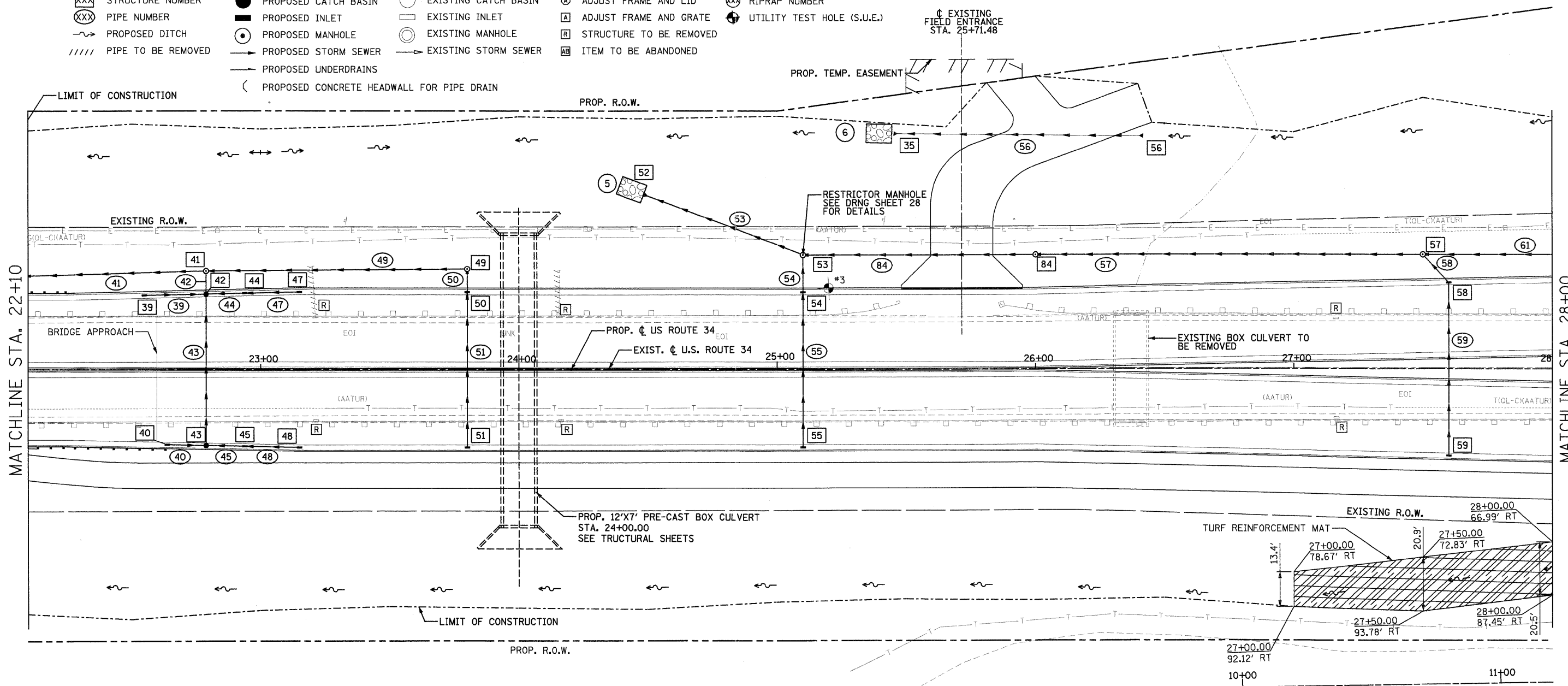


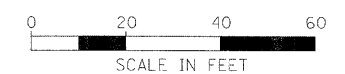


- LEGEND:**
- XXX STRUCTURE NUMBER
 - XXX PIPE NUMBER
 - PROPOSED DITCH
 - PIPE TO BE REMOVED
 - PROPOSED CATCH BASIN
 - PROPOSED INLET
 - PROPOSED MANHOLE
 - PROPOSED STORM SEWER
 - PROPOSED UNDERDRAINS
 - PROPOSED CONCRETE HEADWALL FOR PIPE DRAIN
 - EXISTING CATCH BASIN
 - EXISTING INLET
 - EXISTING MANHOLE
 - EXISTING STORM SEWER
 - ADJUST FRAME AND LID
 - ADJUST FRAME AND GRATE
 - STRUCTURE TO BE REMOVED
 - ITEM TO BE ABANDONED
 - RIPRAP NUMBER
 - UTILITY TEST HOLE (S.U.E.)



MATCHLINE STA. 22+10

MATCHLINE STA. 28+00



PB Americas, Inc.
 230 WEST MONROE STREET,
 SUITE 900
 CHICAGO, IL, 60606
 (312)782-8150

FILE NAME = D366985-sh4-4drain-plendgn	DESIGNED - RJD	REVISED -
PLOT SCALE =	DRAWN - RJD	REVISED -
PLOT DATE = 19-AUG-2011 08:20	CHECKED - PMK	REVISED -
	DATE - 08-18-2011	REVISED -

**STATE OF ILLINOIS
 DEPARTMENT OF TRANSPORTATION**

**DRAINAGE PLAN & PROFILE
 US ROUTE 34**

SCALE: AS SHOWN DRNG - 4A OF 28 STA. 22+00 TO STA. 28+00

F.A.P. RTE.	SECTION	COUNTY	TOTAL SHEETS	SHEET NO.
591	13R-2;14R-1 & BR-1(1);15R-1	KENDALL	429	164
FINAL SUBMITTAL			CONTRACT NO. 66985	
ILLINOIS FED. AID PROJECT				