

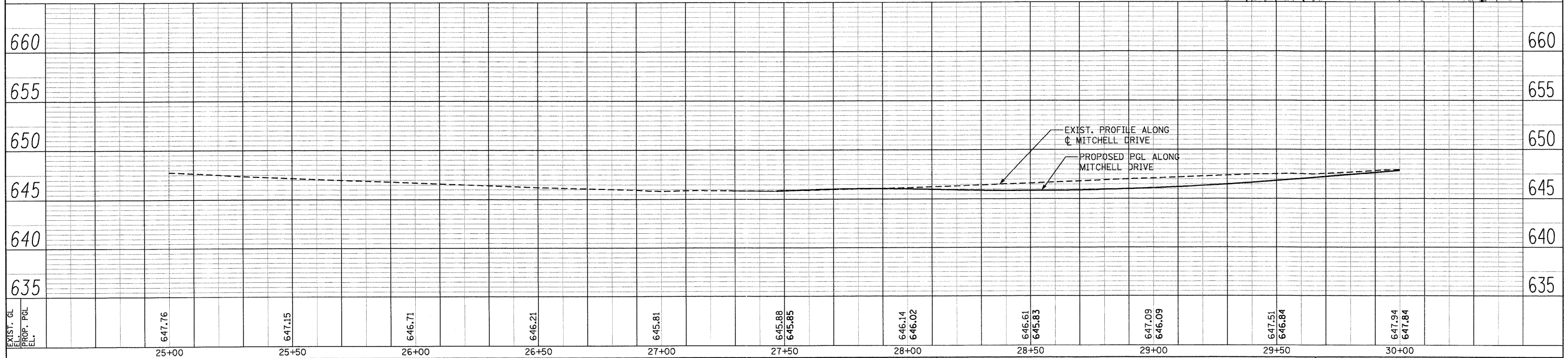
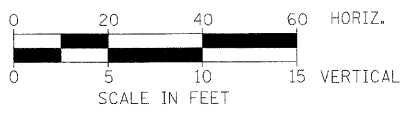
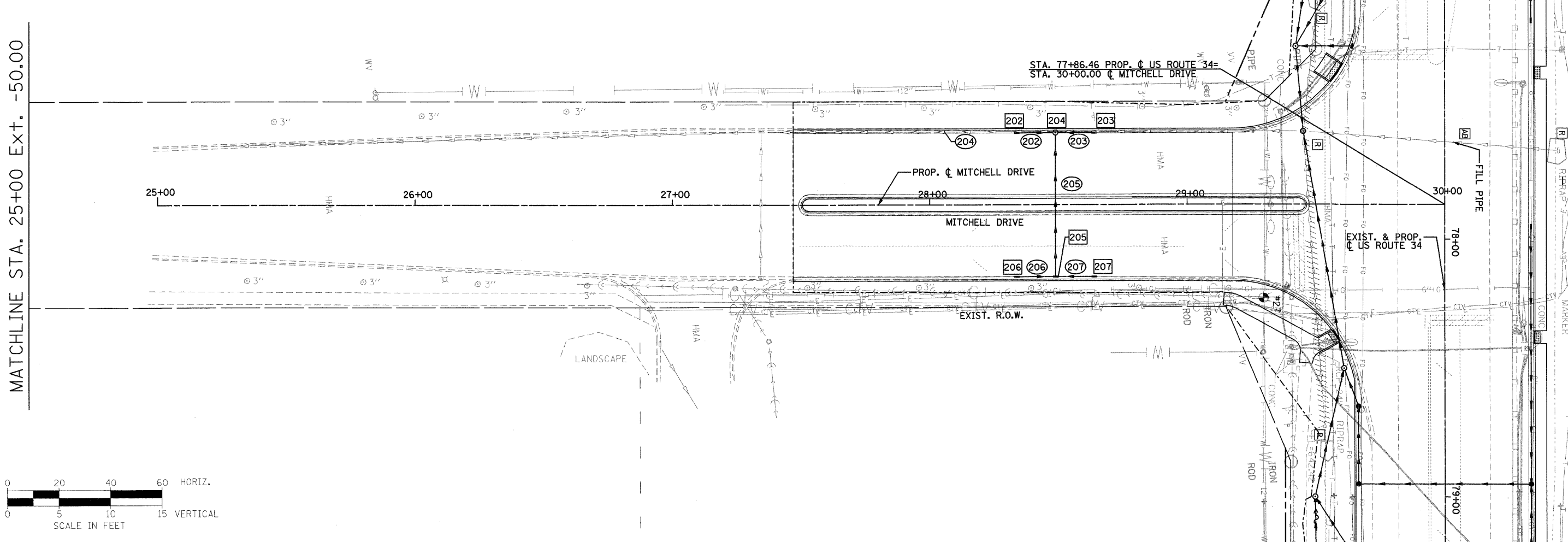
PLAN	SURVEYED	DATE
	ALIGNED	
	NOTED	
	BY	
	NO.	

PROFILE	SURVEYED	DATE
	PLOTTED	
	NOTED	
	BY	
	NO.	

- LEGEND:**
- 1 STRUCTURE NUMBER
 - 1 PIPE NUMBER
 - PROPOSED DITCH
 - PROPOSED CATCH BASIN
 - PROPOSED INLET
 - PROPOSED MANHOLE
 - PROPOSED STORM SEWER
 - EXISTING CATCH BASIN
 - EXISTING INLET
 - EXISTING MANHOLE
 - EXISTING STORM SEWER

MATCHLINE STA. 25+00 EXT. -50.00

MATCHLINE STA. 30+00 EXT. 50.00



PB Americas, Inc.
 230 WEST MONROE STREET,
 SUITE 900
 CHICAGO, IL 60606
 (312)782-8150

FILE NAME = 0366985-sht-24.drain.dgn	DESIGNED - RJD	REVISED -
PLLOT SCALE =	DRAWN - RJD	REVISED -
PLLOT DATE = 19-AUG-2011 09:21	CHECKED - PMK	REVISED -
	DATE - 08-18-2011	REVISED -

**STATE OF ILLINOIS
 DEPARTMENT OF TRANSPORTATION**

**DRAINAGE PLAN & PROFILE
 MITCHELL DRIVE**

SCALE: AS SHOWN DRNG - 24 OF 28 STA. TO STA.

F.A.P. RTE.	SECTION	COUNTY	TOTAL SHEETS	SHEET NO.
591	13R-2;14R-1 & BR-1(1);15R-1	KENDALL	429	187
FINAL SUBMITTAL		CONTRACT NO. 66985		
ILLINOIS FED. AID PROJECT				