

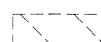
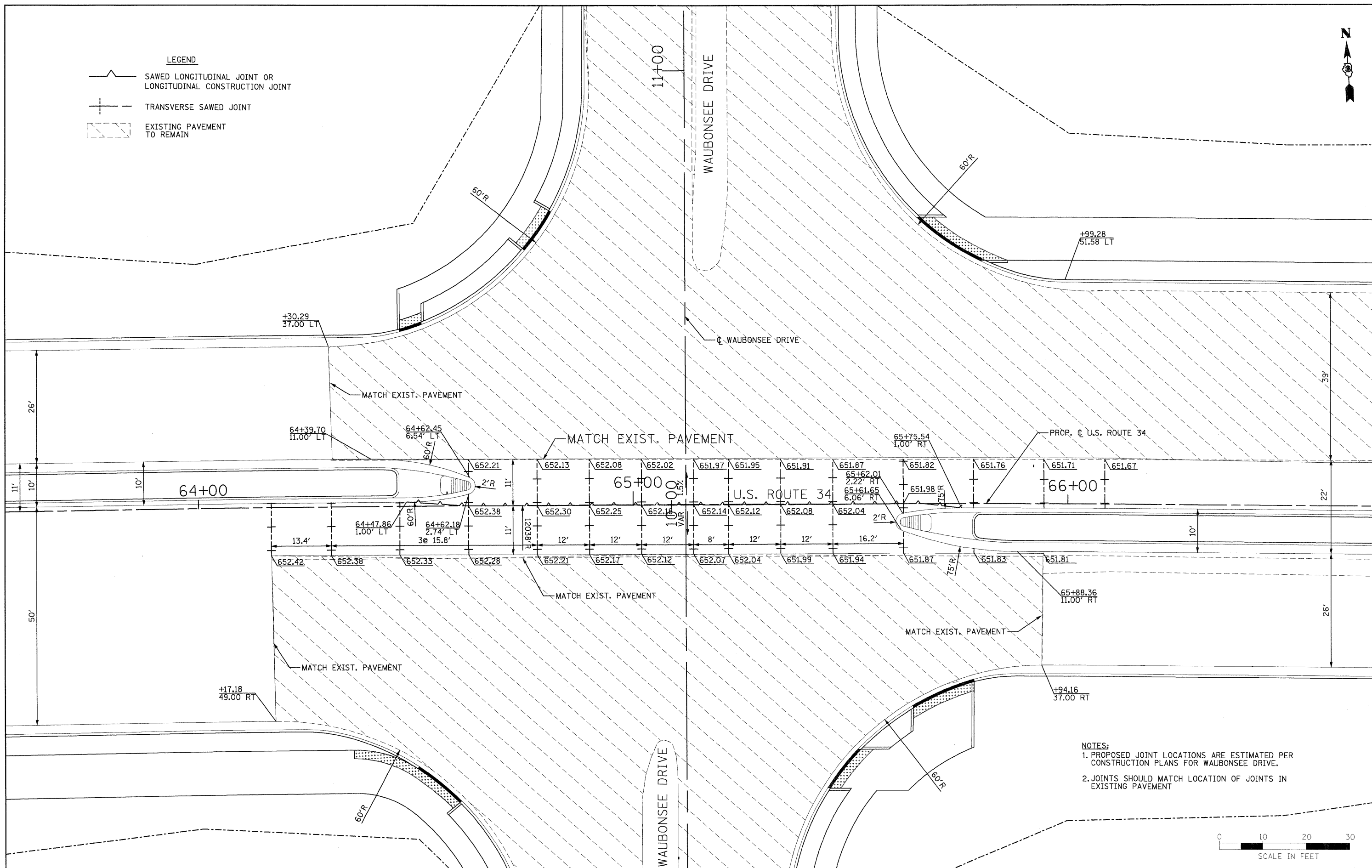


LEGEND

	SAWED LONGITUDINAL JOINT OR LONGITUDINAL CONSTRUCTION JOINT
	TRANSVERSE SAWED JOINT
	EXISTING PAVEMENT TO REMAIN



NOTES:
 1. PROPOSED JOINT LOCATIONS ARE ESTIMATED PER CONSTRUCTION PLANS FOR WAUBONSEE DRIVE.
 2. JOINTS SHOULD MATCH LOCATION OF JOINTS IN EXISTING PAVEMENT



FILE NAME = D365985-sht-2Waubensee.dgn	DESIGNED - MGM	REVISED -
PLOT SCALE =	DRAWN - MCM	REVISED -
PLOT DATE = 19-AUG-2011 08:25	CHECKED - MMS	REVISED -
	DATE - 08-18-2011	REVISED -

**STATE OF ILLINOIS
 DEPARTMENT OF TRANSPORTATION**

**INTERSECTION DETAIL
 WAUBONSEE DRIVE**

SCALE: AS SHOWN INT - 2 OF 7 STA. TO STA.

F.A.P. RTE.	SECTION	COUNTY	TOTAL SHEETS	SHEET NO.
591	13R-2;14R-1 & BR-1(1);15R-1	KENDALL	429	209
FINAL SUBMITTAL		CONTRACT NO. 66985		
ILLINOIS FED. AID PROJECT				