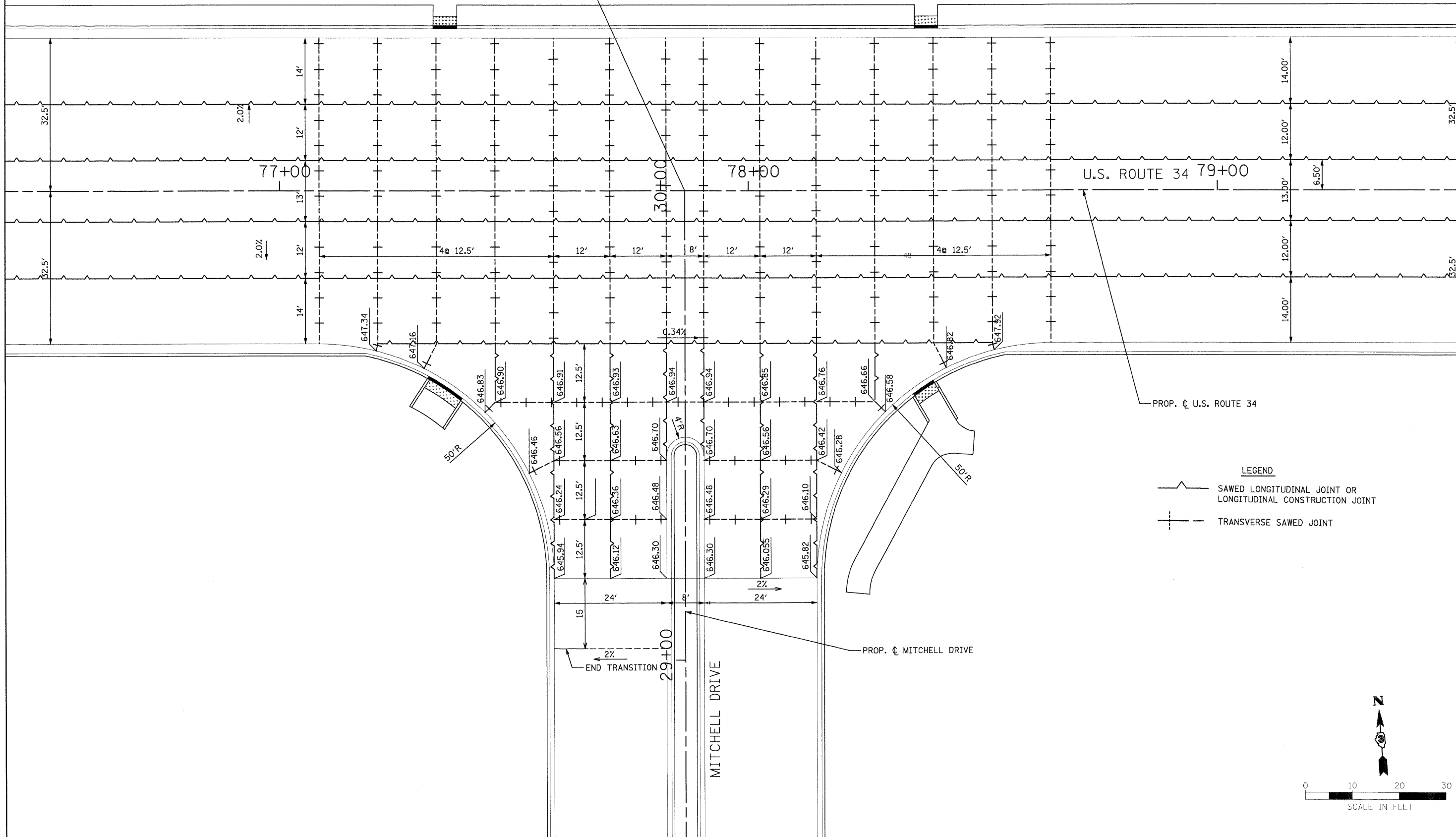
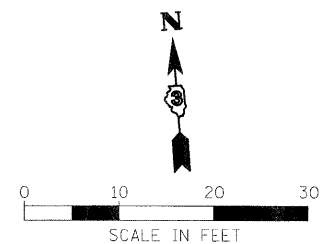


STA. 77+86.46  $\dot{C}$  US ROUTE 34=  
 STA. 30+00.00  $\dot{C}$  MITCHELL DRIVE



**LEGEND**  
 SAWED LONGITUDINAL JOINT OR LONGITUDINAL CONSTRUCTION JOINT  
 TRANSVERSE SAWED JOINT



**STATE OF ILLINOIS  
 DEPARTMENT OF TRANSPORTATION**

**INTERSECTION DETAIL  
 MITCHELL DRIVE**

**PB Americas, Inc.**  
 250 WEST MONROE STREET,  
 SUITE 300  
 CHICAGO, IL, 60606  
 (312)782-8150

FILE NAME = D366985-sht-3Mitchell.dgn	DESIGNED - MGM	REVISED -
PLOT SCALE =	DRAWN - MGM	REVISED -
PLOT DATE = 19-AUG-2011 08:25	CHECKED - MMS	REVISED -
	DATE - 08-18-2011	REVISED -

DESIGNED - MGM	REVISED -
DRAWN - MGM	REVISED -
CHECKED - MMS	REVISED -
DATE - 08-18-2011	REVISED -

SCALE: AS SHOWN INT - 3 OF 7 STA. TO STA.

F.A.P. RTE.	SECTION	COUNTY	TOTAL SHEETS	SHEET NO.
591	13R-2;14R-1 & BR-1(1);15R-1	KENDALL	429	210
FINAL SUBMITTAL		CONTRACT NO. 66985		
ILLINOIS FED. AID PROJECT				