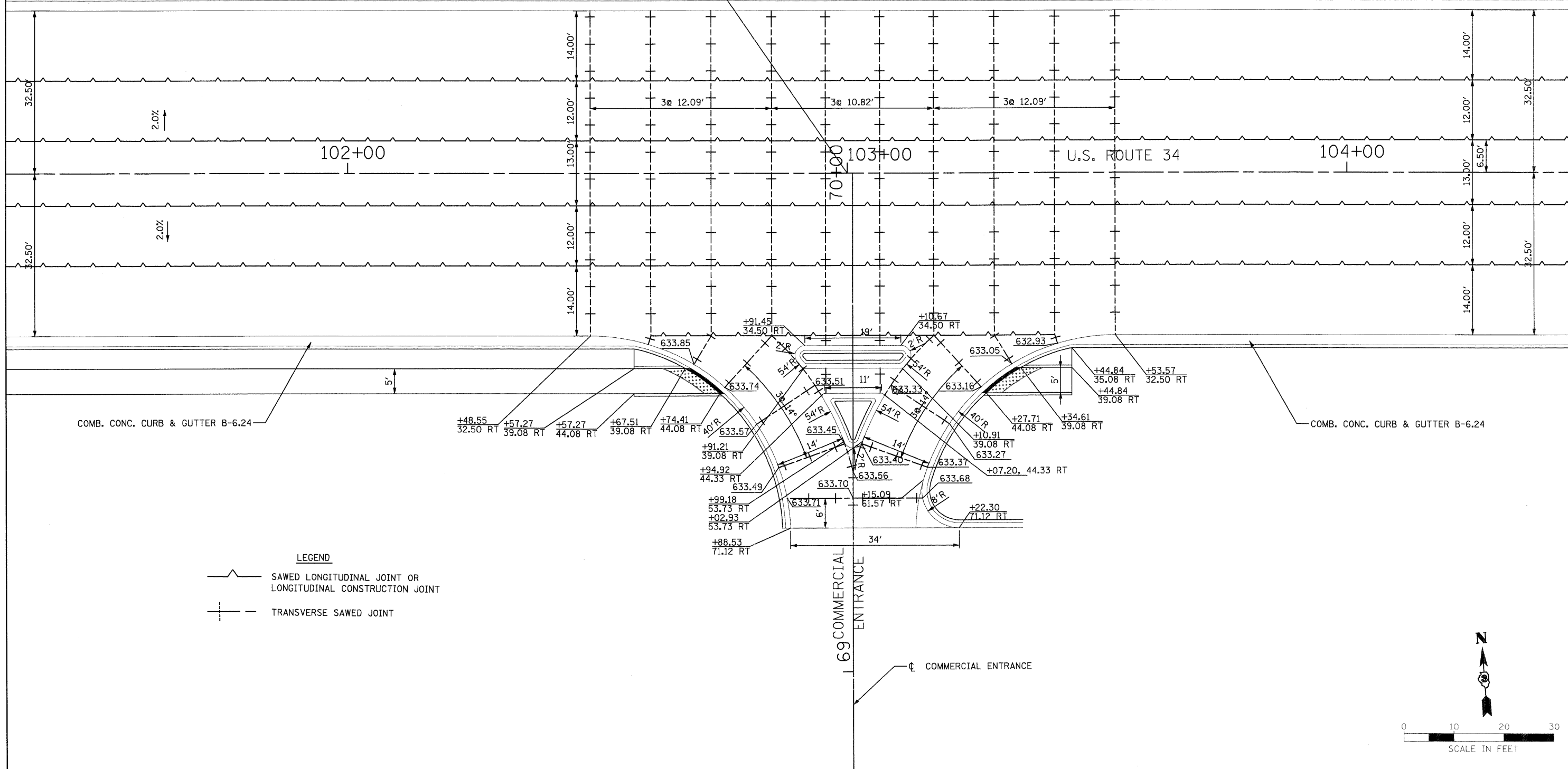
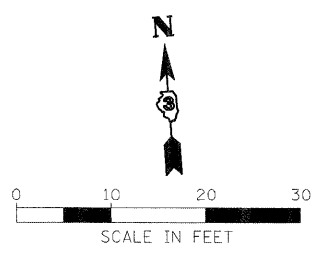


STA. 103+00.00 U.S. ROUTE 34=
 STA. 70+00.00 COMMERCIAL ENTRANCE



LEGEND
 SAWED LONGITUDINAL JOINT OR LONGITUDINAL CONSTRUCTION JOINT
 TRANSVERSE SAWED JOINT



PB Americas, Inc.
 230 WEST MONROE STREET,
 SUITE 900
 CHICAGO, IL. 60606
 (312)782-8150

FILE NAME = D366985-sh1-7CommEntrance2.dwg
 PLOT SCALE =
 PLOT DATE = 19-AUG-2011 08:25

DESIGNED - MGM
 DRAWN - MGM
 CHECKED - MMS
 DATE - 08-18-2011

REVISED -
 REVISED -
 REVISED -
 REVISED -

**STATE OF ILLINOIS
 DEPARTMENT OF TRANSPORTATION**

**INTERSECTION DETAIL
 COMMERCIAL ENTRANCE2**

SCALE: AS SHOWN INT - 7 OF 7 STA. TO STA.

F.A.P. RTE.	SECTION	COUNTY	TOTAL SHEETS	SHEET NO.
591	13R-2;14R-1 & BR-1(1);15R-1	KENDALL	429	214
FINAL SUBMITTAL			CONTRACT NO. 66985	
ILLINOIS FED. AID PROJECT				