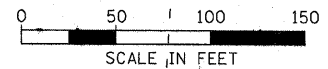


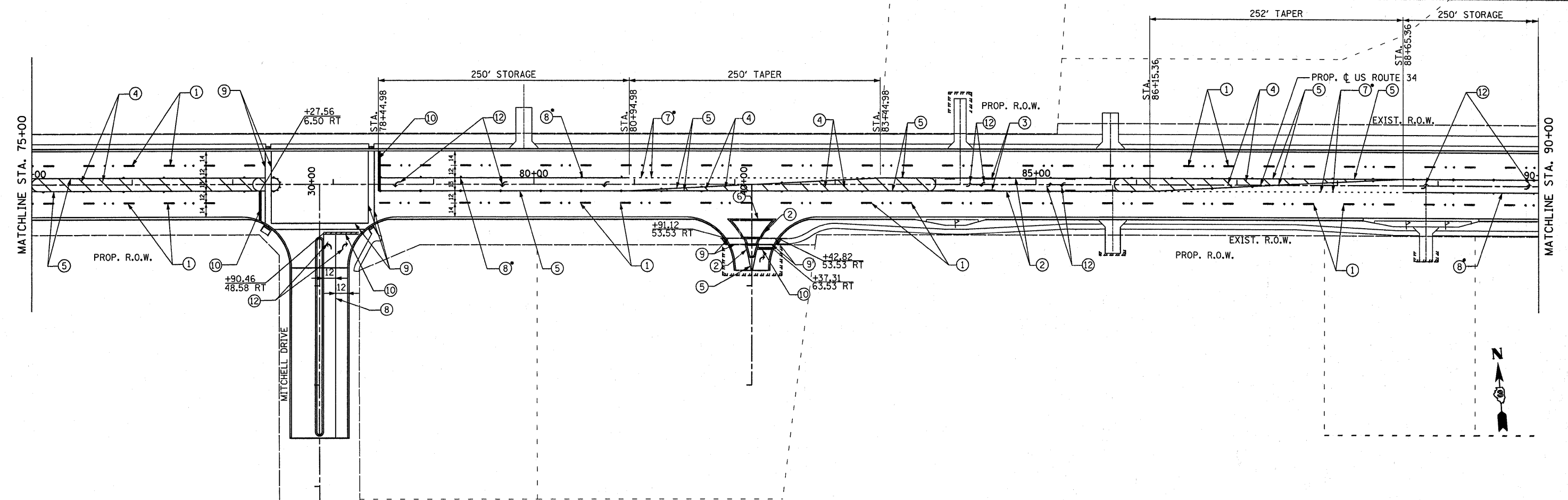
NOTES:

1. ALL ROADWAY PAVEMENT MARKINGS SHALL BE EPOXY PAVEMENT MARKINGS EXCEPT FOR 6" WHITE SKIP LINES.
2. ALL ROADWAY DIMENSIONS ARE TO EDGE OF PAVEMENT UNLESS OTHERWISE INDICATED.
- 8" WHITE LINES SHALL BE GROOVED.



LEGEND:

- | | | |
|--|---|---|
| <ul style="list-style-type: none"> ① PREFORMED PLASTIC PAVEMENT MARKING LINE-TYPE B-INLAID 6" (WHITE) 10' DASH, 30' SKIP (TYP.) ② PAVEMENT MARKING LINE 4" (YELLOW) ③ PAVEMENT MARKING LINE 6" (YELLOW) 10' DASH, 30' SKIP (TYP.) ④ PAVEMENT MARKING LINE 12" (YELLOW) @ 45° @ 20' C-C ⑤ PAVEMENT MARKING LINE 2- 4", 12" C-C (YELLOW) ⑥ PAVEMENT MARKING LINE 4" (WHITE) ⑦ PAVEMENT MARKING LINE 8" WHITE DOTTED LINE (TYP.) | <ul style="list-style-type: none"> ⑧ PAVEMENT MARKING LINE 8" (WHITE) ⑨ PAVEMENT MARKING LINE 6" (WHITE) ⑩ PAVEMENT MARKING LINE 24" (WHITE) ⑪ RECESSED REFLECTIVE PAVEMENT MARKER, CLUSTER OF 2 - ONE WAY, CRYSTAL MARKERS @ 80' C-C (TYP.) ⑫ PAVEMENT MARKING LETTER AND SYMBOL 8' ARROW | <ul style="list-style-type: none"> ⑬ PAVEMENT MARKING LINE 12" (WHITE) @ 45° @ 20' C-C ⑭ PAVEMENT MARKING LINE 2- 4", 12" C-C (WHITE) ⑮ PAVEMENT MARKING LINE 12" (WHITE) ◀ ONE-WAY WHITE RECESSED REFLECTIVE PAVEMENT MARKER ◆ TWO-WAY AMBER RECESSED REFLECTIVE PAVEMENT MARKER ◀ ONE-WAY AMBER RECESSED REFLECTIVE PAVEMENT MARKER ⊥ ROADWAY SIGN |
|--|---|---|



c:\pwork\purdot\duncenbd\0214252\0365985\pmk03-revised.dgn

| | | | | | | |
|--|--|---|---|---|---|---|
| | FILE NAME = duncenbd PLOT SCALE = 50.0000' / in. PLOT DATE = 11/3/2011 | DESIGNED - MMS DRAWN - MMS CHECKED - KJB DATE - 08-18-2011 | REVISED - BDD 11/03/2011 REVISED - REVISED - REVISED - | STATE OF ILLINOIS DEPARTMENT OF TRANSPORTATION | PAVEMENT MARKING PLANS US ROUTE 34 | F.A.P. RTE. 591 SECTION 13R-2;14R-1 & BR-1(1);15R-1 COUNTY KENDALL TOTAL SHEETS 429 SHEET NO. 217 CONTRACT NO. 66985 |
| | SCALE: 1" = 50' PMK - 3 OF 5 STA. 60+00 TO STA. 90+00 | | | | [ILLINOIS] FED. AID PROJECT | |