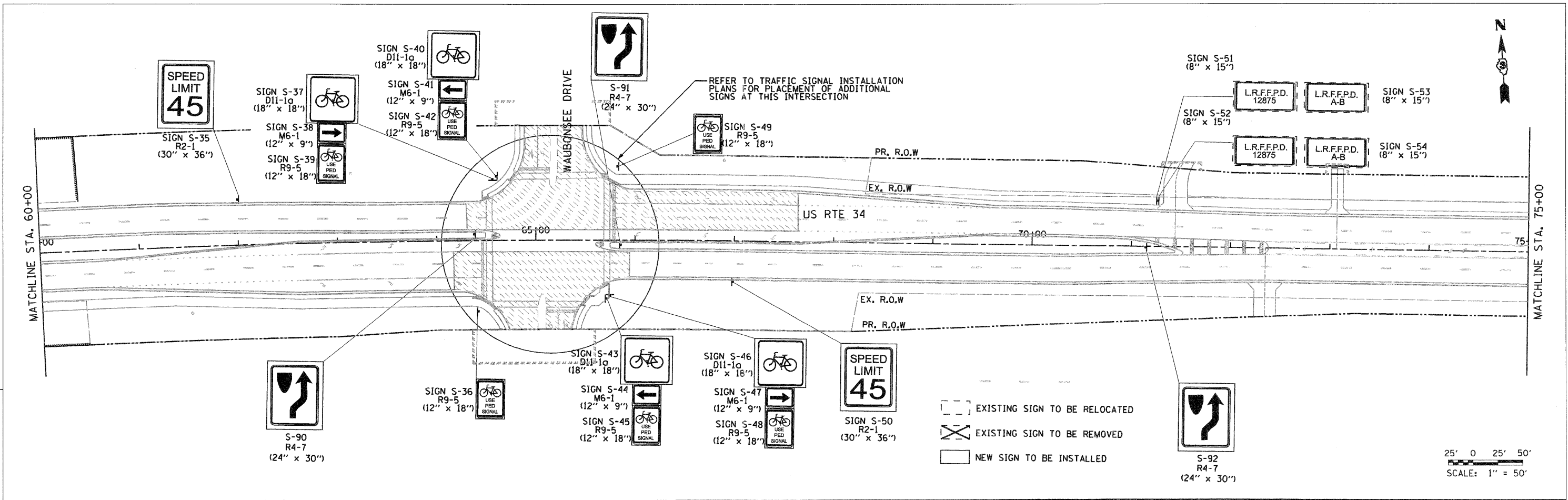


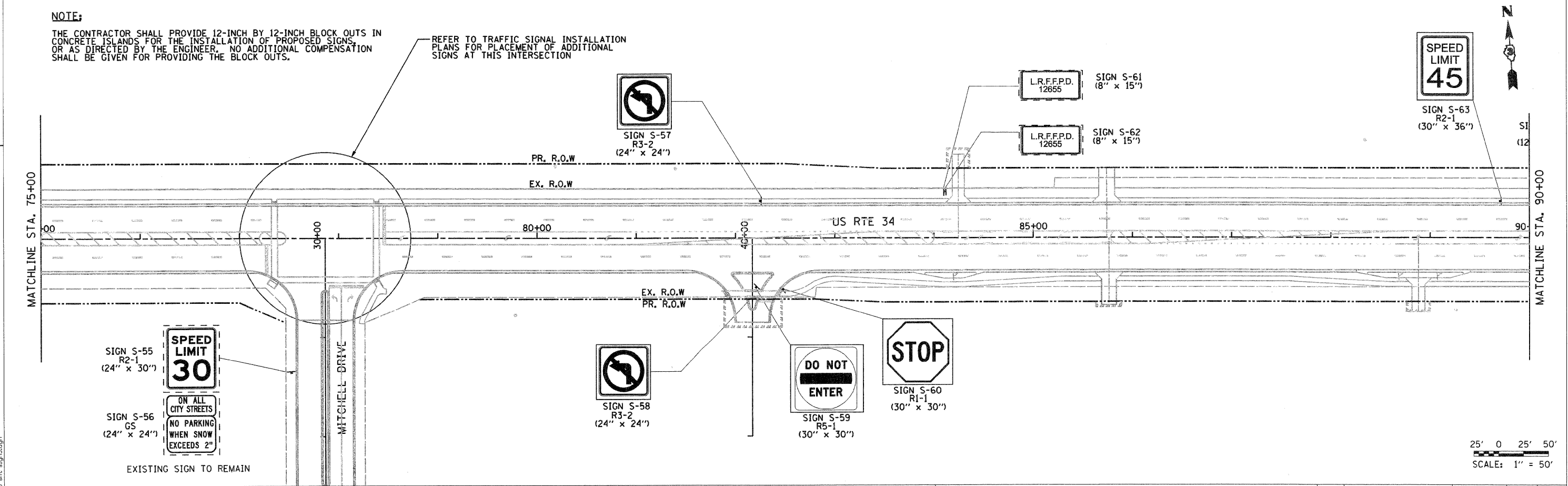
EJM ENGINEERING, INC.
 411 South Wells Street Suite 800
 Chicago, Illinois 60607



NOTE:

THE CONTRACTOR SHALL PROVIDE 12-INCH BY 12-INCH BLOCK OUTS IN CONCRETE ISLANDS FOR THE INSTALLATION OF PROPOSED SIGNS, OR AS DIRECTED BY THE ENGINEER. NO ADDITIONAL COMPENSATION SHALL BE GIVEN FOR PROVIDING THE BLOCK OUTS.

REFER TO TRAFFIC SIGNAL INSTALLATION PLANS FOR PLACEMENT OF ADDITIONAL SIGNS AT THIS INTERSECTION



PB Americas, Inc.
 230 WEST MONROE STREET,
 SUITE 900
 CHICAGO, IL 60606
 (312)782-8150

FILE NAME =	DESIGNED - GR	REVISED -
PLOT SCALE = 1/50	DRAWN - GR	REVISED -
PLOT DATE = 5/20/2011	CHECKED - BS	REVISED -
	DATE = 4/8/2011	REVISED -

**STATE OF ILLINOIS
 DEPARTMENT OF TRANSPORTATION**

**SIGNING PLAN
 US RTE 34**

SCALE: 1"=50' SIGN 3 OF 6 SHEETS STA. 60+00 TO STA. 90+00

F.A.P. RTE.	SECTION	COUNTY	TOTAL SHEETS	SHEET NO.
591	13R-2;14R-1 & BR-1(1);15R-1	KENDALL	429	222
				CONTRACT NO. 66985
ILLINOIS FED. AID PROJECT				