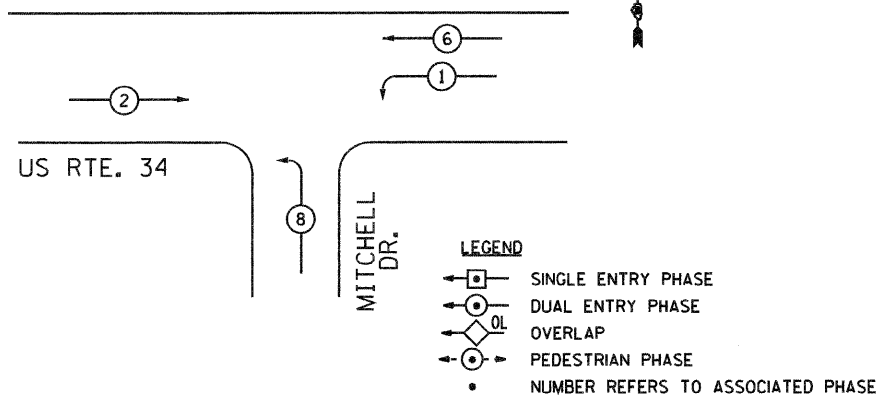
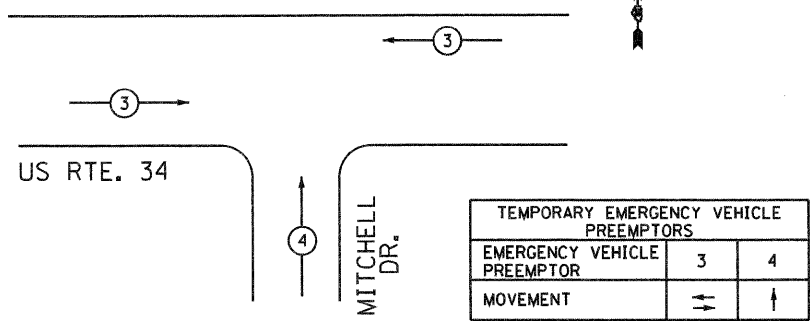


EJM ENGINEERING, INC.
 411 South Wells Street Suite 800
 Chicago, Illinois 60607

TEMPORARY PHASE DESIGNATION DIAGRAM
 ALL STAGES



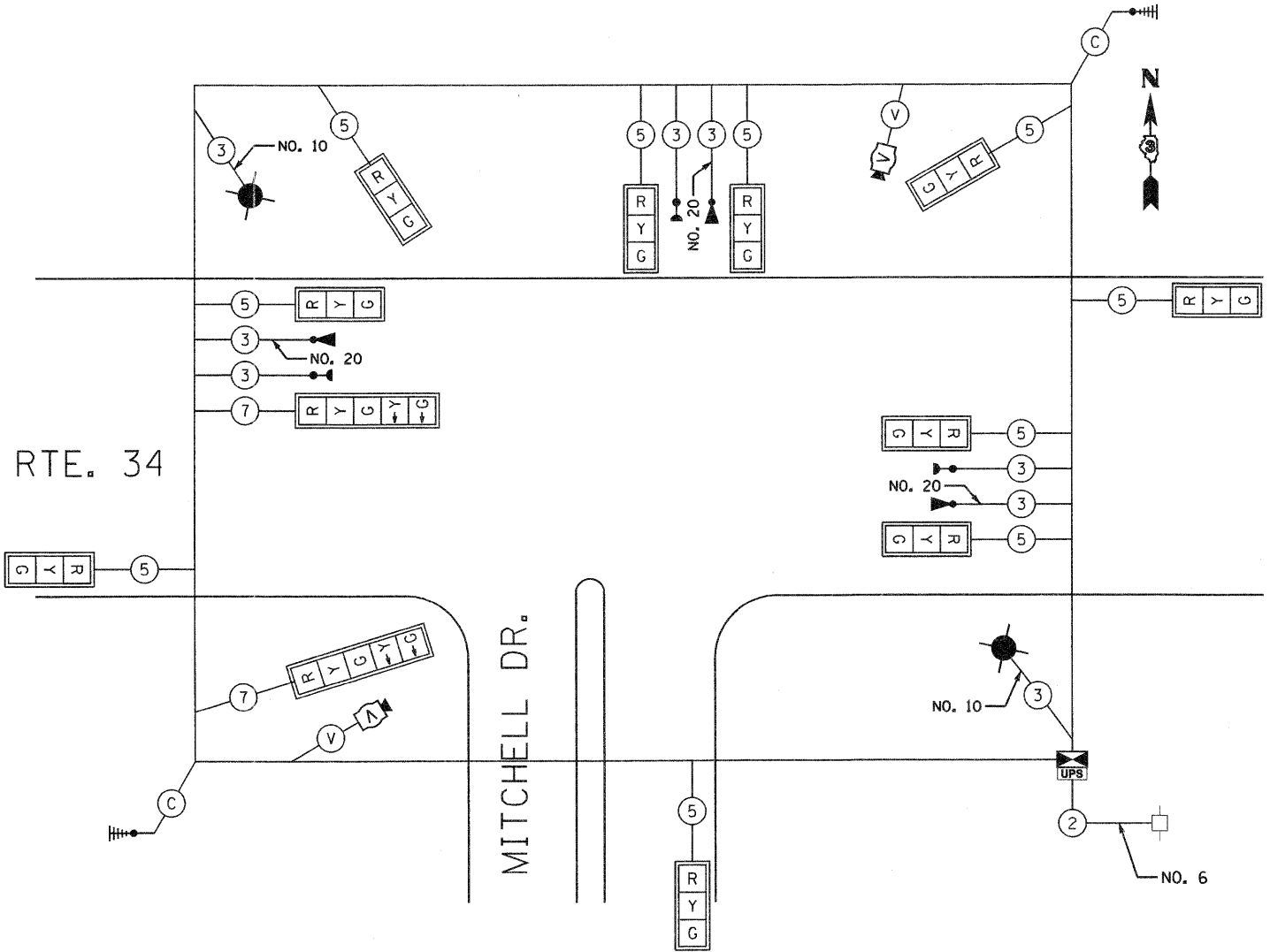
EMERGENCY VEHICLE PRE-EMPTION SEQUENCE
 ALL STAGES



US RTE. 34

MITCHELL DR.

TEMPORARY CABLE PLAN



CABLE PLAN LEGEND

EXISTING		PROPOSED		EXISTING		PROPOSED	
	G		R				24
8" (200mm) TRAFFIC SIGNAL SECTION		12" (300mm) TRAFFIC SIGNAL SECTION		SIGNAL FACE WITH BACKPLATE		FIBER OPTIC CABLE IN CONDUIT, NO. 62.5/125 2-MM12F & SM12F	
	W		W				
12" (300mm) PEDESTRIAN SIGNAL SECTION		12" (300mm) PEDESTRIAN SIGNAL SECTION		PUSHBUTTON DETECTOR		VEHICLE DETECTOR, INDUCTION LOOP	
CONTROLLER CABINET		SERVICE INSTALLATION		DENOTES NUMBER OF CONDUCTORS, ALL CABLE NO. 14 EXCEPT AS INDICATED. "V" INDICATES VENDOR CABLE FOR VIDEO CAMERA. "C" INDICATES COAXIAL CABLE. ALL LOOP DETECTOR CABLE TO BE SHIELDED.		VIDEO CAMERA	
TELEPHONE CONNECTION		EMERGENCY VEHICLE LIGHT DETECTOR		RADIO INTERCONNECT ANTENNA			
CONFIRMATION BEACON		UNINTERRUPTIBLE POWER SUPPLY					
LUMINAIRE							

D:\366985-ah\1-tas2.dgn

PB Americas, Inc.
 230 WEST MONROE STREET,
 SUITE 900
 CHICAGO, IL 60606
 (312)782-8150

FILE NAME =	DESIGNED - GR	REVISED -
PLOT SCALE = 1:20	DRAWN - GR	REVISED -
PLOT DATE = 4/9/2011	CHECKED - BS	REVISED -
	DATE - 4/8/2011	REVISED -

STATE OF ILLINOIS
DEPARTMENT OF TRANSPORTATION

TEMPORARY CABLE PLAN
US RTE. 34 AND MITCHELL DR.

SCALE: N.T.S. SHEET NO. 5 OF 9 SHEETS STA. TO STA.

F.A.P. RTE.	SECTION	COUNTY	TOTAL SHEETS	SHEET NO.
591	13R-2;14R-1 & BR-1(1);15R-1	KENDALL	429	230
				CONTRACT NO. 66985
ILLINOIS FED. AID PROJECT				