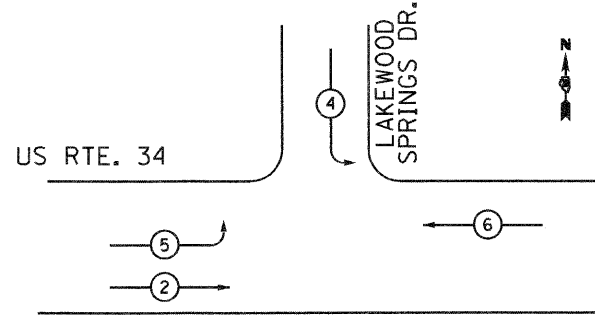


EJM ENGINEERING, INC.
 411 South Wells Street Suite 800
 Chicago, Illinois 60607

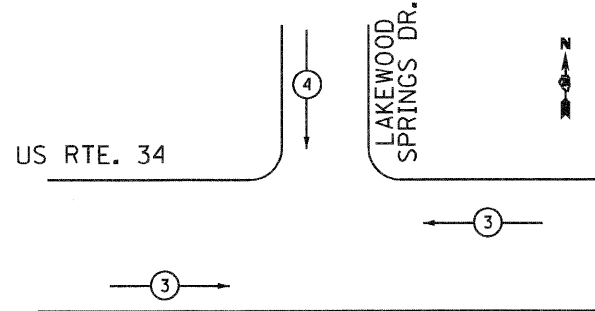


TEMPORARY PHASE DESIGNATION DIAGRAM
 ALL STAGES



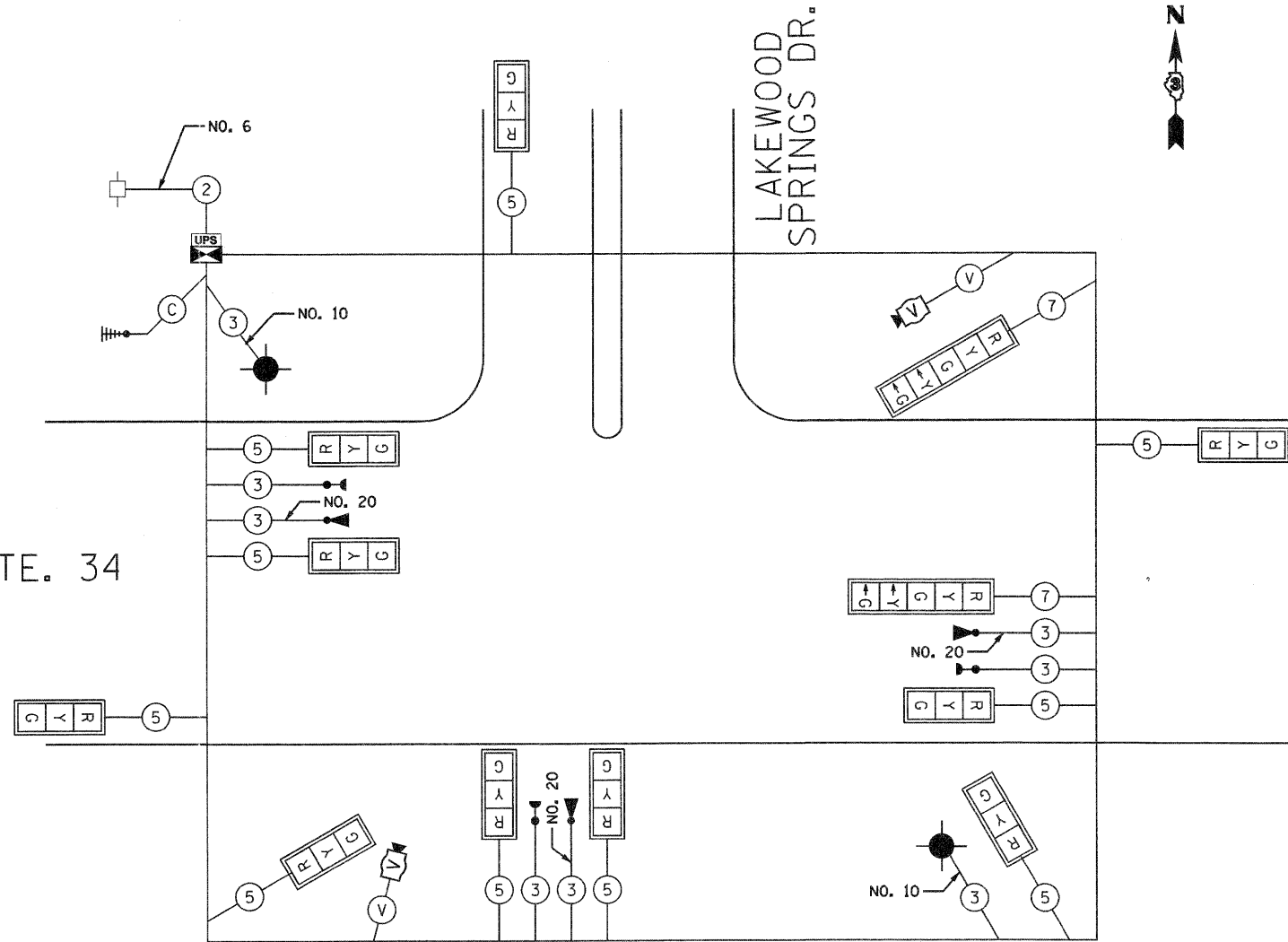
- LEGEND**
- SINGLE ENTRY PHASE
 - DUAL ENTRY PHASE
 - OVERLAP
 - PEDESTRIAN PHASE
 - NUMBER REFERS TO ASSOCIATED PHASE

EMERGENCY VEHICLE PRE-EMPTION SEQUENCE
 ALL STAGES



TEMPORARY EMERGENCY VEHICLE PREEMPTORS		
EMERGENCY VEHICLE PREEMPTOR	3	4
MOVEMENT	↔	↓

US RTE. 34

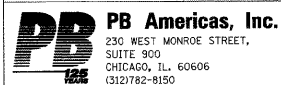


TEMPORARY CABLE PLAN

CABLE PLAN LEGEND

- | | | | |
|-----------------|-----------------|-----------------|-----------------|
| EXISTING | PROPOSED | EXISTING | PROPOSED |
| | | | |
| | | | |
| | | | |
| | | | |
| | | | |
| | | | |
| | | | |
| | | | |
| | | | |
| | | | |
| | | | |

...D:\366985-ahc-tts32.dgn



FILE NAME =	DESIGNED - GR	REVISED -
PLOT SCALE = 1:20	DRAWN - GR	REVISED -
PLOT DATE = 4/9/2011	CHECKED - BS	REVISED -
	DATE - 4/8/2011	REVISED -

STATE OF ILLINOIS
DEPARTMENT OF TRANSPORTATION

TEMPORARY CABLE PLAN
US RTE. 34 AND LAKEWOOD SPRINGS DR.

SCALE: N.T.S. SHEET NO. 8 OF 9 SHEETS STA. TO STA.

F.A.P. RTE.	SECTION	COUNTY	TOTAL SHEETS	SHEET NO.
591	13R-2;14R-1 & BR-1(1);15R-1	KENDALL	429	233
				CONTRACT NO. 66985

ILLINOIS FED. AID PROJECT