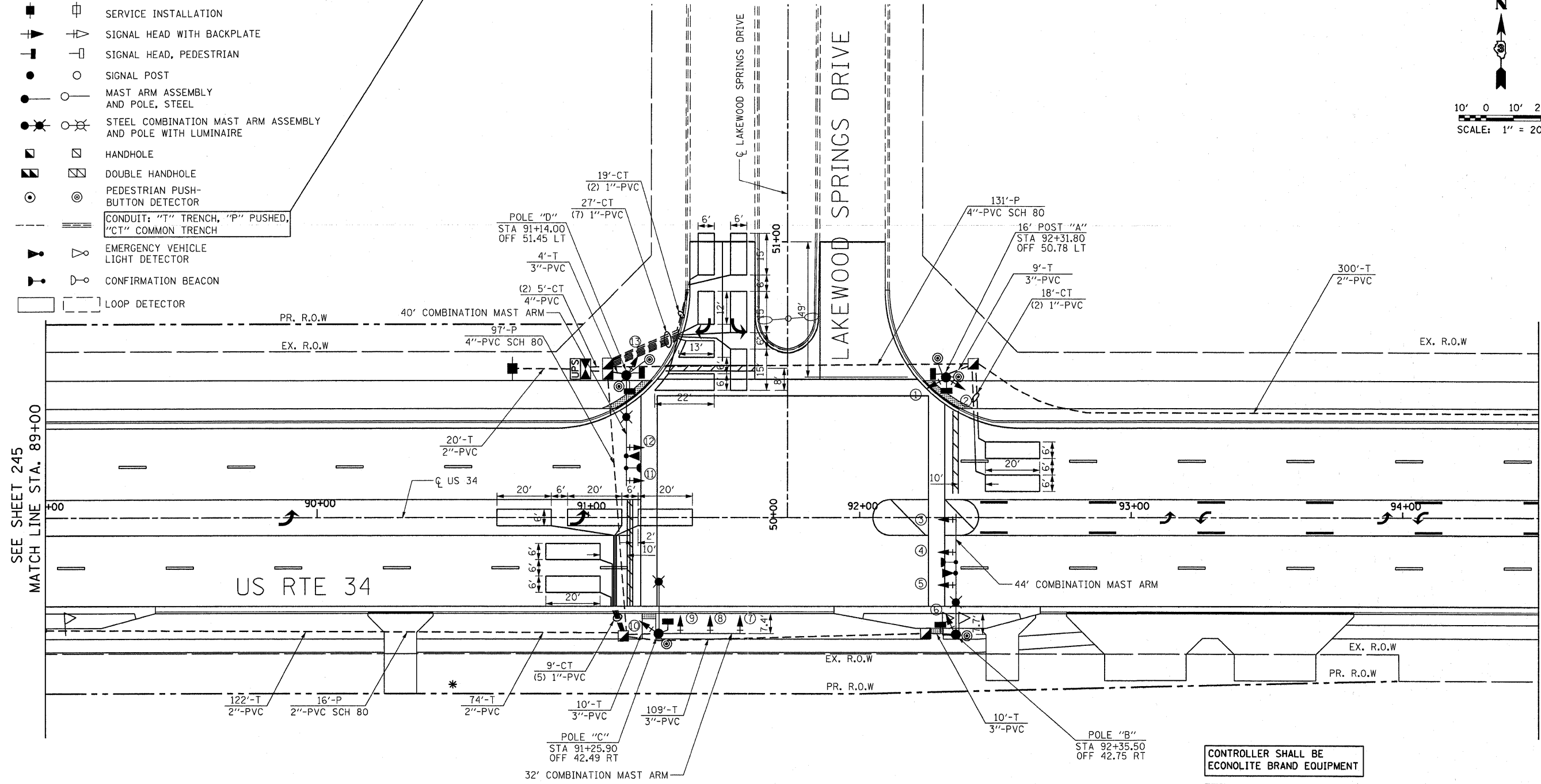
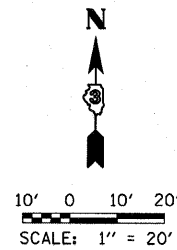


**TRAFFIC SIGNAL LEGEND**

- |          |          |   |
|----------|----------|---|
| PROPOSED | EXISTING |   |
|          |          | CONTROLLER  |
|          |          | UPS "E" UNINTERRUPTIBLE POWER SUPPLY                        |
|          |          | SERVICE INSTALLATION  |
|          |          | SIGNAL HEAD WITH BACKPLATE                                  |
|          |          | SIGNAL HEAD, PEDESTRIAN                                     |
|          |          | SIGNAL POST   |
|          |          | MAST ARM ASSEMBLY AND POLE, STEEL                           |
|          |          | STEEL COMBINATION MAST ARM ASSEMBLY AND POLE WITH LUMINAIRE |
|          |          | HANDHOLE  |
|          |          | DOUBLE HANDHOLE   |
|          |          | PEDESTRIAN PUSH-BUTTON DETECTOR                             |
|          |          | CONDUIT: "T" TRENCH, "P" PUSHED, "CT" COMMON TRENCH         |
|          |          | EMERGENCY VEHICLE LIGHT DETECTOR                            |
|          |          | CONFIRMATION BEACON   |
|          |          | LOOP DETECTOR   |

THE INSTALLATION METHODS FOR THE PROPOSED CONDUIT ON THIS SHEET AND THE FOLLOWING SHEET ARE SUGGESTED. THE CONTRACTOR HAS THE OPTION WHEN INSTALLING THE PROPOSED CONDUIT IN ACCORDANCE TO SECTION 810 OF THE STANDARD SPECIFICATIONS.



SCHEDULE OF TRAFFIC SIGNAL HEAD QUANTITIES

LOCATION	ITEM	UNIT	QUANTITY
4,5,7,8,11,12	SH, 1F, 3S, MAM	EACH	6
2,6,10	SH, 1F, 3S, BM	EACH	3
3,9	SH, 1F, 5S, MAM	EACH	2
1,13	SH, 1F, 5S, BM	EACH	2

CONTROLLER SHALL BE ECONOLITE BRAND EQUIPMENT

PEDESTRIAN PUSH-BUTTON DETECTOR SHALL BE 4EVER BRAND EQUIPMENT OR APPROVED EQUAL

A PHOTOCCELL SHALL BE MOUNTED TO THE TRAFFIC SIGNAL CABINET FOR LIGHTING CONTROL. ALL REQUIRED LIGHTING EQUIPMENT MOUNTED ON TOP OF OR WITHIN THE TRAFFIC SIGNAL CABINET SHALL BE INCIDENTAL TO THE COST OF THE CONTROLLER AND CABINET.

**EJM ENGINEERING, INC.**  
411 South Wells Street Suite 800  
Chicago, Illinois 60607

c:\pwwork\pwwork\duncenbd\0214252\0366985-sh1-t-9-revised.dgn

<b>PB Americas, Inc.</b> 230 WEST MONROE STREET, SUITE 900 CHICAGO, IL 60606 (312)782-8150	FILE NAME = duncenbd	DESIGNED - GR	REVISED - BDD 09/26/2011	<b>STATE OF ILLINOIS</b> <b>DEPARTMENT OF TRANSPORTATION</b>	<b>PROPOSED TRAFFIC SIGNAL INSTALLATION</b> <b>US 34 AND LAKEWOOD SPRINGS DRIVE</b>	F.A.P. RTE.	SECTION	COUNTY	TOTAL SHEETS	SHEET NO.
	PLOT SCALE = 20.0000' / in.	DRAWN - GR	REVISED -			591	13R-2;14R-1 & BR-1(1);15R-1	KENDALL	429	244
	CHECKED - BS	REVISOR -				CONTRACT NO. 66985		ILLINOIS FED. AID PROJECT		
	DATE - 4/8/2011	REVISOR -			SCALE: 1"=20'	SHEET NO. 10 OF 14 SHEETS	STA.	TO STA.		FINAL SUBMITTAL

SEE SHEET TS-13 FOR TRAFFIC SIGNAL GENERAL NOTES.