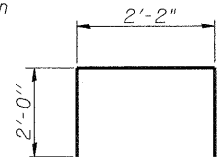
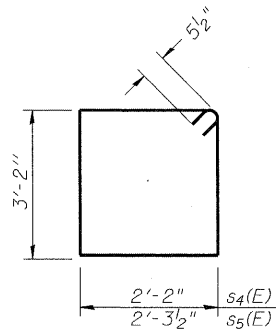


FIELD CUTTING DIAGRAM

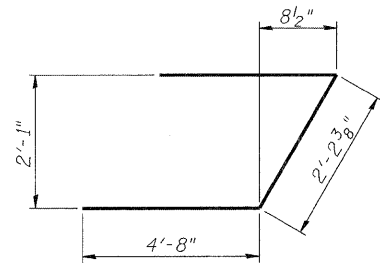
Order $v_5(E)$ and $v_6(E)$ full length.
Cut as shown and use remainder of bars in opposite face.



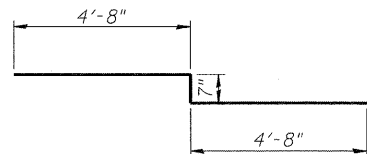
BAR $u_3(E)$



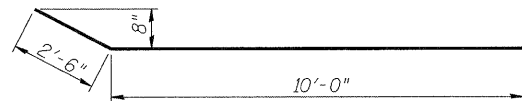
BARS $s_4(E)$ & $s_5(E)$



BAR $u_2(E)$



BAR $z(E)$

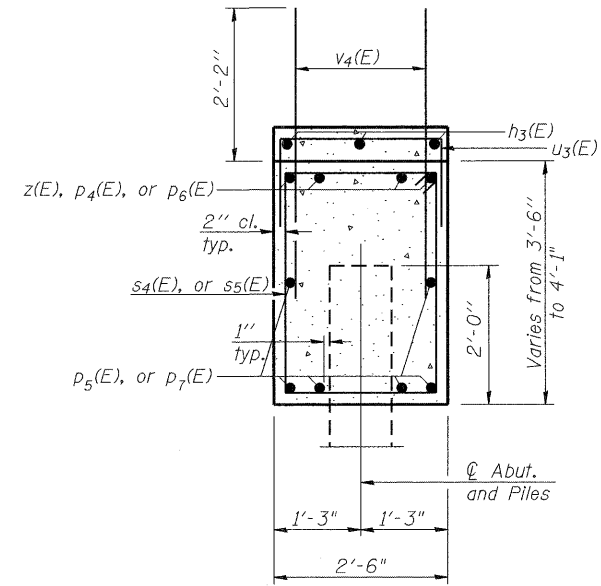


BAR $h_2(E)$

PILE DATA EAST ABUTMENT

Type: Metal Shell Piles 14"x0.312"
Nominal Required Bearing: 383 Kips
Factored Resistance Available: 211 Kips
Est. Length: 42 Ft.
No. Production Piles: 4
No. Test Piles: 1

Note: Piles for the east abutment shall be driven through 18" to 24" precored holes extending 2' into the existing grade according to article 512.09 (c) of the Standard Specifications. Cost included in Driving Piles.



SEC. THRU ABUT.

**EAST ABUTMENT
BILL OF MATERIALS**

Bar	No.	Size	Length	Shape
$h_2(E)$	36	#5	12'-6"	
$h_3(E)$	3	#5	12'-0"	
$p_4(E)$	4	#7	15'-0"	
$p_5(E)$	6	#7	12'-8"	
$p_6(E)$	4	#7	25'-5"	
$p_7(E)$	6	#7	24'-0"	
$s_4(E)$	35	#5	11'-7"	
$s_5(E)$	2	#5	11'-10"	
$u_2(E)$	8	#6	11'-7"	
$u_3(E)$	11	#4	6'-2"	
$v_4(E)$	70	#5	4'-4"	
$v_5(E)$	11	#5	10'-11"	
$v_6(E)$	11	#5	10'-11"	
$z(E)$	4	#8	9'-11"	
Structure Excavation			Cu. Yd.	100
Concrete Structures			Cu. Yd.	18
Reinforcement Bars, Epoxy Coated			Pound	2590
Furnishing Metal Shell Piles, 14"x0.312"			Foot	168
Driving Piles			Foot	168
Test Pile Metal Shells			Each	1

COMPANY NAME: SEC GROUP, INC.
PROJECT CONTACT: Robert G. Davies
CLIENT: ILLINOIS DEPARTMENT OF TRANSPORTATION
DATE PLOTTED: 10/14/2011 10:03:57 AM
PLOT DRIVER: rgs-eb-rcs-001
PEN TABLE: 22x34.tbl

SEC Group, Inc.
A HOK Group Company
420 N. Front Street
Moline, IL 61705-2138
T 815.385.1778 F 815.385.1781
www.secgroup.com

PB Americas, Inc.
230 WEST MONROE STREET,
SUITE 900
CHICAGO, IL. 60606

USER NAME = whood	DESIGNED - JPG	REVISED -
PLOT SCALE =	CHECKED - SSM	REVISED -
PLOT DATE = 10/14/2011	DRAWN - WJH	REVISED -
	CHECKED - RGD	REVISED -

**STATE OF ILLINOIS
DEPARTMENT OF TRANSPORTATION**

**EAST ABUTMENT DETAILS
STRUCTURE NO. 047-0051**

SHEET NO. S-32 OF S-43 SHEETS

F.A.P. RTE. 591	SECTION 14BR-1	COUNTY KENDALL	TOTAL SHEETS 429	SHEET NO. 282
CONTRACT NO. 66985			ILLINOIS FED. AID PROJECT	