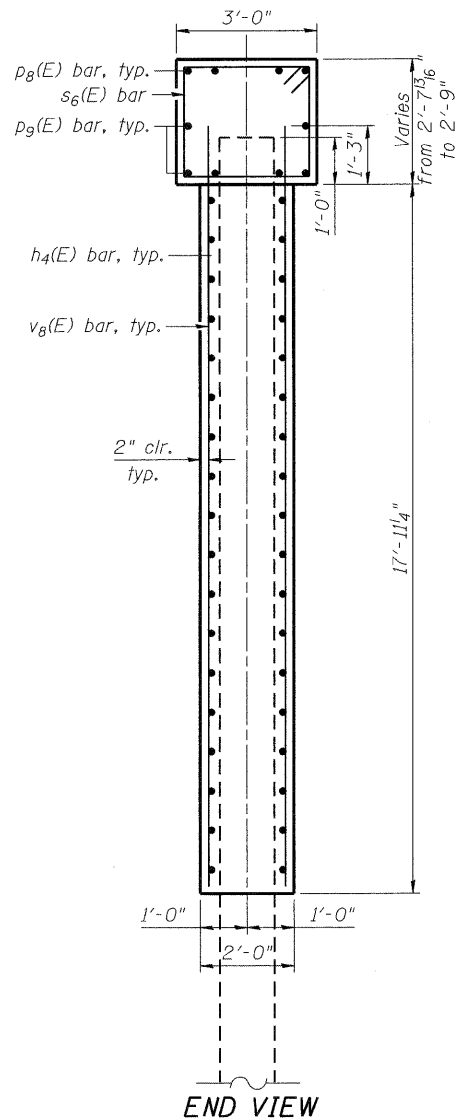
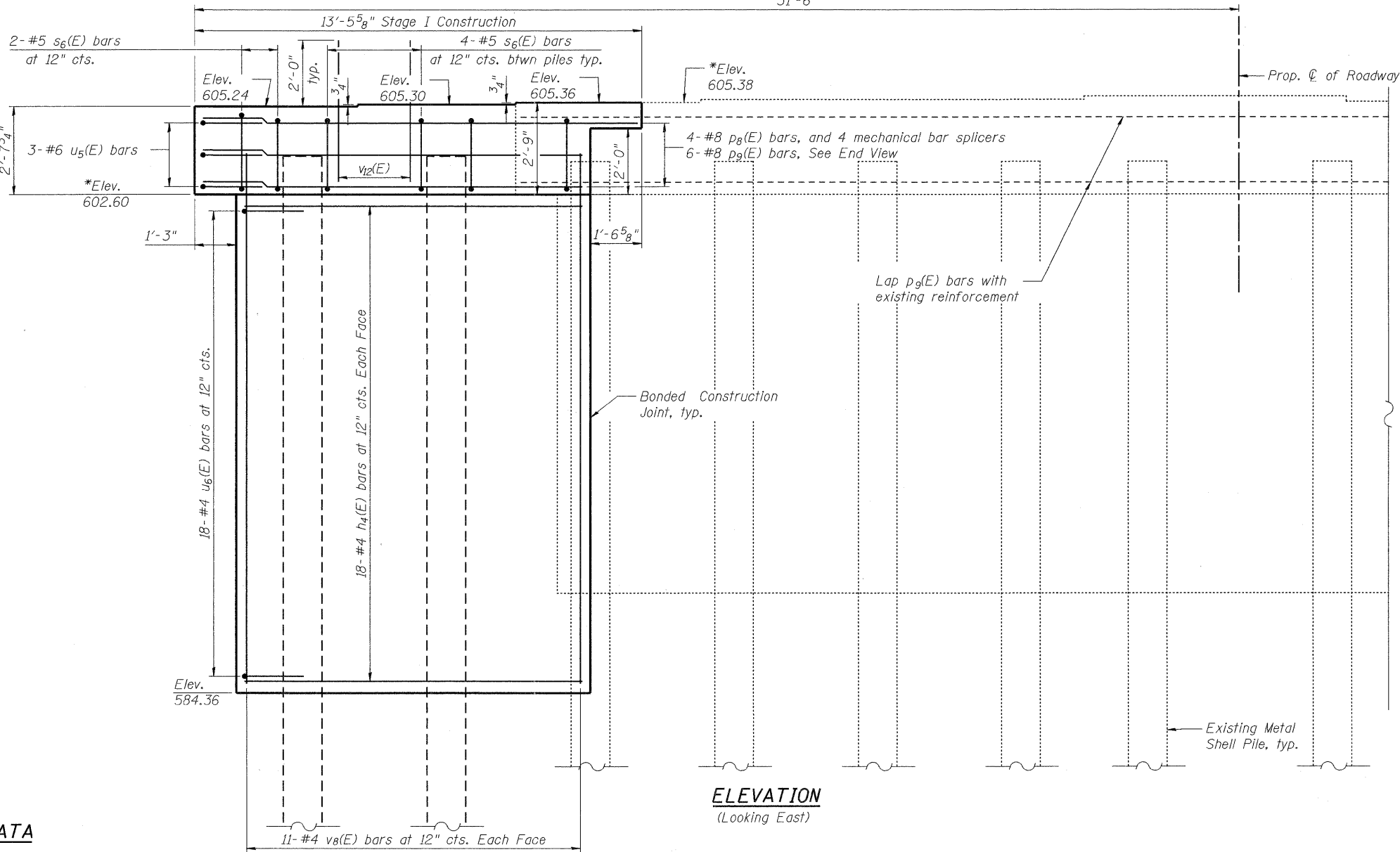
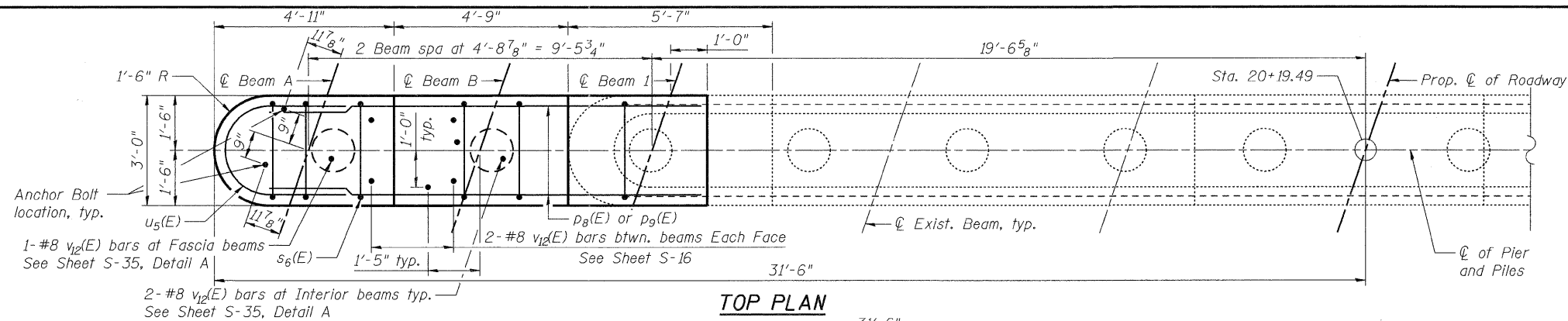


Notes:

Space reinforcement in cap to miss anchor bolts.
 Four steps monolithically with cap.
 For details of piles, see sheet S-39.
 Existing reinforcement shall be cleaned and incorporated into the new construction. Cost included with Concrete Removal.

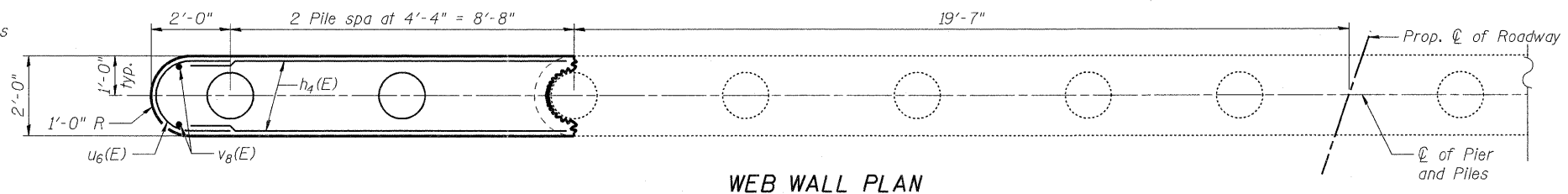
See sheet S-5 and S-6 for Concrete Removal details.
 See sheet S-17 for details related to anchor bolts.

* Elevations based on Existing Plans by Hazelet & Endal, Inc. Contractor to verify in field.



PILE DATA

Type: Metal Shell Piles 14"x0.312"
 Nominal Required Bearing: 469 Kips
 Factored Resistance Available: 209 Kips
 Est. Length: 35 Ft.
 No. Production Piles: 1
 No. Test Piles: 1



COMPANY NAME: SEC GROUP INC.
 PROJECT CONTACT: Robert G. Davies
 CLIENT: ILLINOIS DEPARTMENT OF TRANSPORTATION
 DATE PLOTTED: 10/14/2011 11:03:41 AM
 PLOT DRIVER: C:\Program Files\Autodesk\AutoCAD 2011\Plot\Plotter\Plotter.exe
 PEN TABLE: Structure_20x34.tbl

SEC Group, Inc.
 An IBM Green Company
 400 N. First Street
 Mettawa, IL 60090-2710
 815.385.1778 815.385.1781
 www.secgroupinc.com
 sec@secgroupinc.com

PB Americas, Inc.
 230 WEST MONROE STREET,
 SUITE 900
 CHICAGO, IL. 60606

USER NAME = whood	DESIGNED - JPG	REVISED -
PLOT SCALE =	CHECKED - SSM	REVISED -
PLOT DATE = 10/14/2011	DRAWN - WJH	REVISED -
	CHECKED - RGD	REVISED -

**STATE OF ILLINOIS
 DEPARTMENT OF TRANSPORTATION**

**PIER 1
 STRUCTURE NO. 047-0051**
 SHEET NO. S-33 OF S-43 SHEETS

F.A.P. RTE.	SECTION	COUNTY	TOTAL SHEETS	SHEET NO.
591	14BR-1	KENDALL	429	283
CONTRACT NO. 66985			ILLINOIS FED. AID PROJECT	