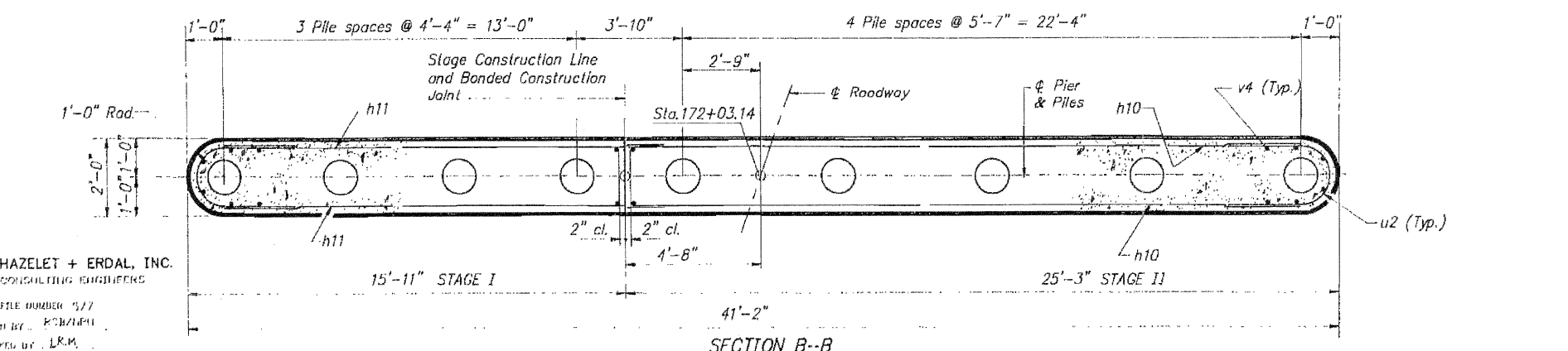
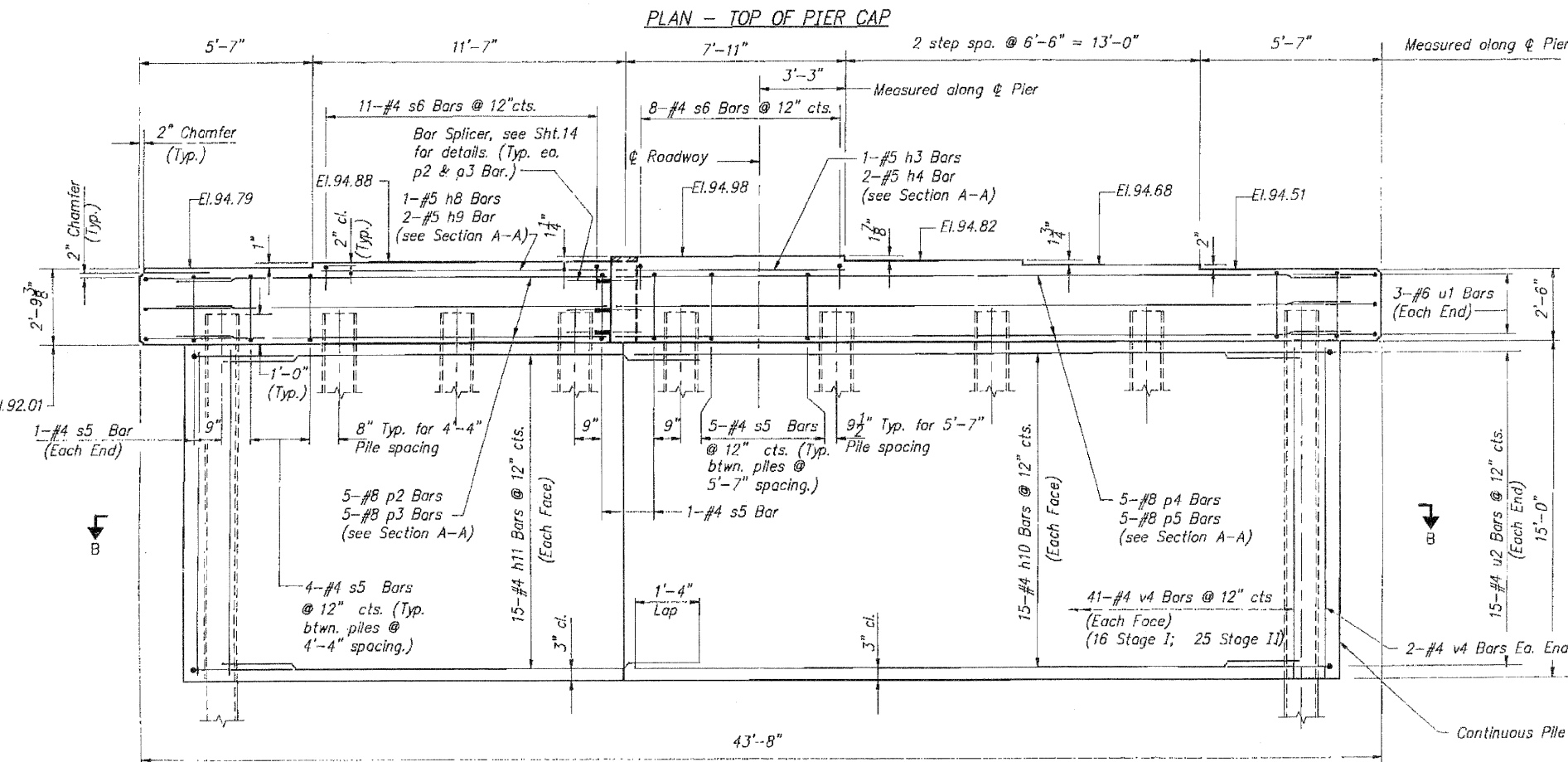
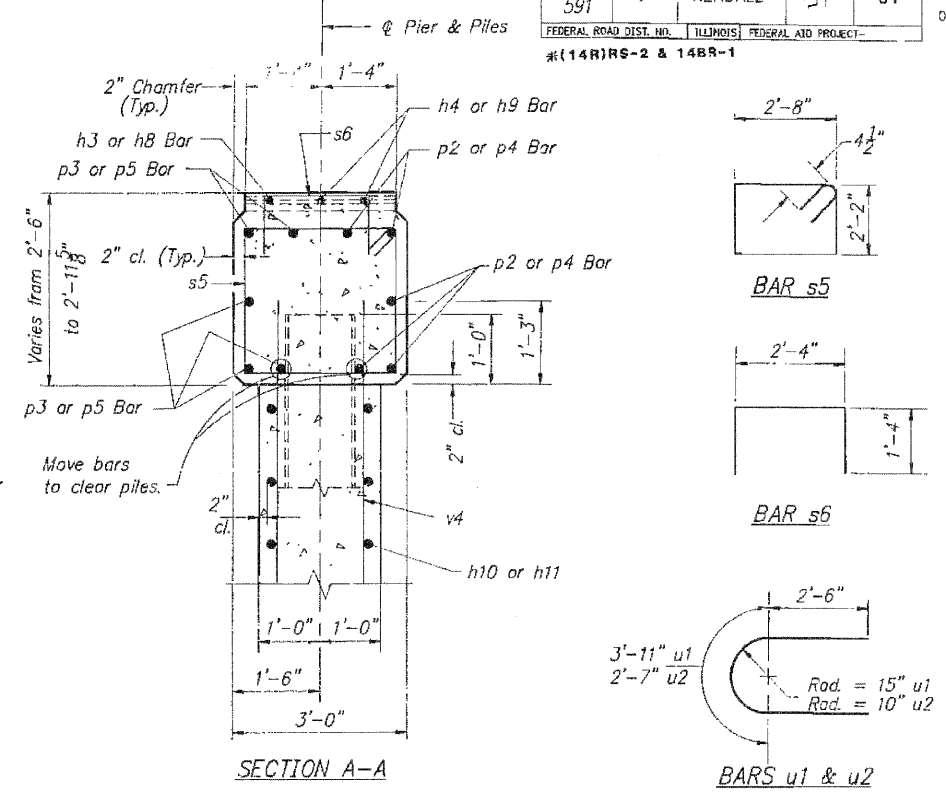
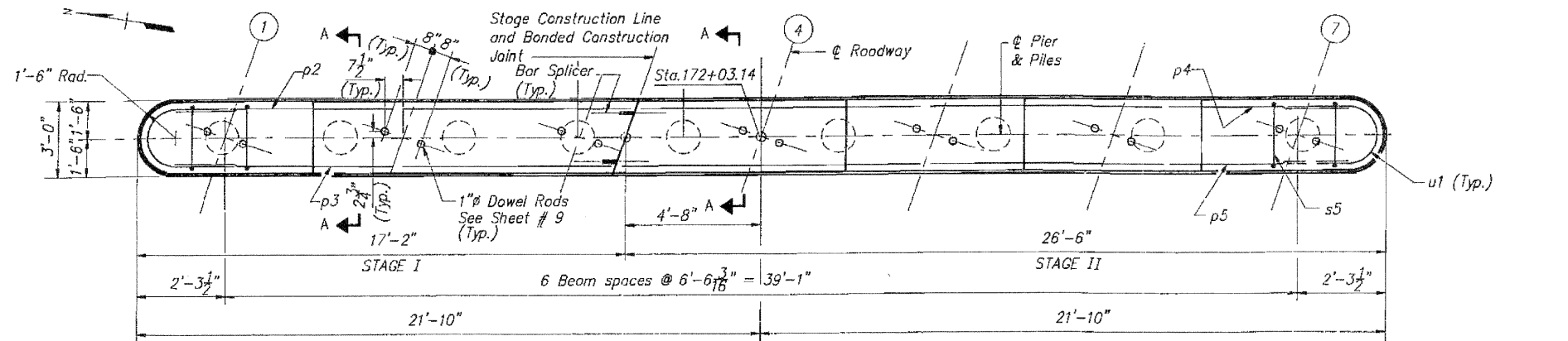


STATE OF ILLINOIS
DEPARTMENT OF TRANSPORTATION

ROUTE NO.	SECTION	COUNTY	TOTAL SHEETS	SHEET NO.
F.A.P. 591	#	KENDALL	51	31
FEDERAL ROAD DIST. NO.		ILLINOIS	FEDERAL AID PROJECT	
#(14BR)-2 & 14BR-1				

SHEET NO. 12
OF 17 SHEETS



**DRAWINGS PROVIDED FOR INFORMATION ONLY.
DRAWINGS ARE NOT "AS-BUILT"**

BILL OF MATERIAL

Bar	No.	Size	Length	Shape
h4	2	#5	7'-3"	—
h3	1	#5	7'-11"	—
h8	1	#5	10'-10"	—
h9	2	#5	11'-3"	—
h10	30	#4	24'-0"	—
h11	30	#4	16'-4"	—
p2	5	#8	15'-10"	—
p3	5	#8	15'-0"	—
p4	5	#8	24'-4"	—
p5	5	#8	25'-2"	—
s5	36	#4	10'-5"	□
s6	19	#4	5'-0"	□
u1	6	#6	8'-11"	U
u2	30	#4	7'-7"	U
v4	86	#4	16'-0"	—
Reinforcement Bars		Lbs.		3400
Class X Concrete		Cu. Yds.		52.7
Furnishing Metal Pile Shells 14"		Lin. Ft.		272
Driving & Filling Shells		Lin. Ft.		272
Test Pile Metal Shells		Each		1

Notes:
All edges shall have standard 3/4" chamfer except as noted.
Space reinforcement in cap to miss dowel rods.
Pour steps monolithically with cap.

PILE DATA
Type: Metal Shell 14"
Capacity: 45 Ton
Est. Length: 34 Ft. (Min. Tip El. 59.0)
No. Required: 8 + 1 Test Pile

PIER 1
F.A.P. ROUTE 591 SECTION 14BR-1
KENDALL COUNTY
STA. 172+32.50

BRIDGE APPENDIX
EXISTING STRUCTURE - ORIGINAL PLANS
6 OF 7

SHEET NO 293F

HAZELET + ERDAL, INC.
CONSULTING ENGINEERS
FILE NUMBER 577
DRAWN BY: K.S./L.P.H.
CHECKED BY: L.R.M.
APPROVED BY: E.P.R.
DATE: 10/22/88