

GENERAL NOTES

Reinforcement bars shall conform to the requirements of ASTM A 706, Grade 60.
 Reinforcement bars designated (E) shall be epoxy coated.
 The Contractor is responsible for the design and performance of the lagging using no less than a 3" nominal rough-sawn thickness and timber with a minimum allowable bending stress of 1000 psi.
 Prior to commencing work, the Contractor shall verify the location of all existing utilities. Work shall be completed in such a manner so as not to disturb or damage the existing utilities.

INDEX OF SHEETS

- 1 General Plan and Elevation
- 2 General Data
- 3-4 Plan and Elevation
- 5-6 Sections and Details
- 7 Parapet Railing
- 8 HP Pile Details
- 9-11 Soil Boring Logs

TOTAL BILL OF MATERIAL

ITEM	UNIT	QUANTITY
Concrete Structures	Cu. Yd.	68.6
Protective Coat	Sq. Yd.	51
Form Liner Textured Surface	Sq. Ft.	1416
Stud Shear Connectors	Each	148
Reinforcement Bars, Epoxy Coated	Pound	7330
Parapet Railing	Foot	185
Name Plates	Each	1
Geocomposite Wall Drain	Sq. Yd.	85
Pipe Underdrains for Structures 4"	Foot	185
Driving Soldier Piles	Foot	948
Untreated Timber Lagging	Sq. Ft.	1053
Furnishing Soldier Piles (HP Section)	Foot	1020

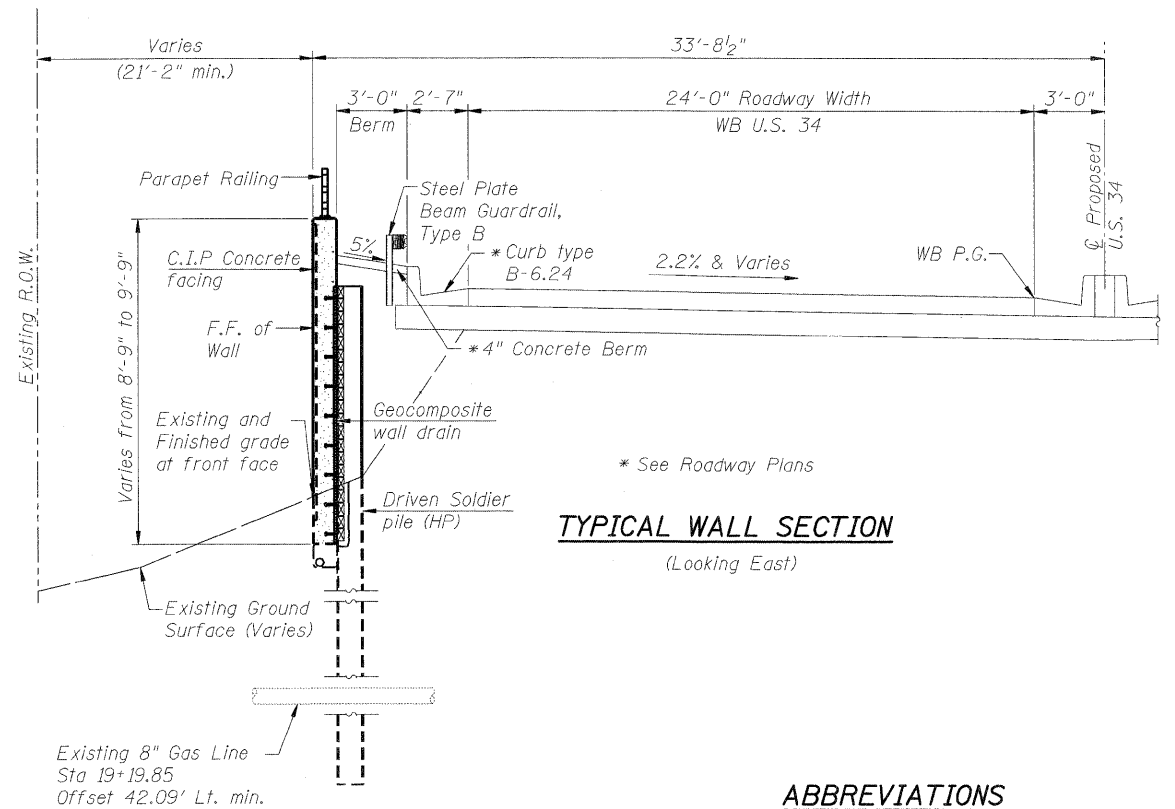
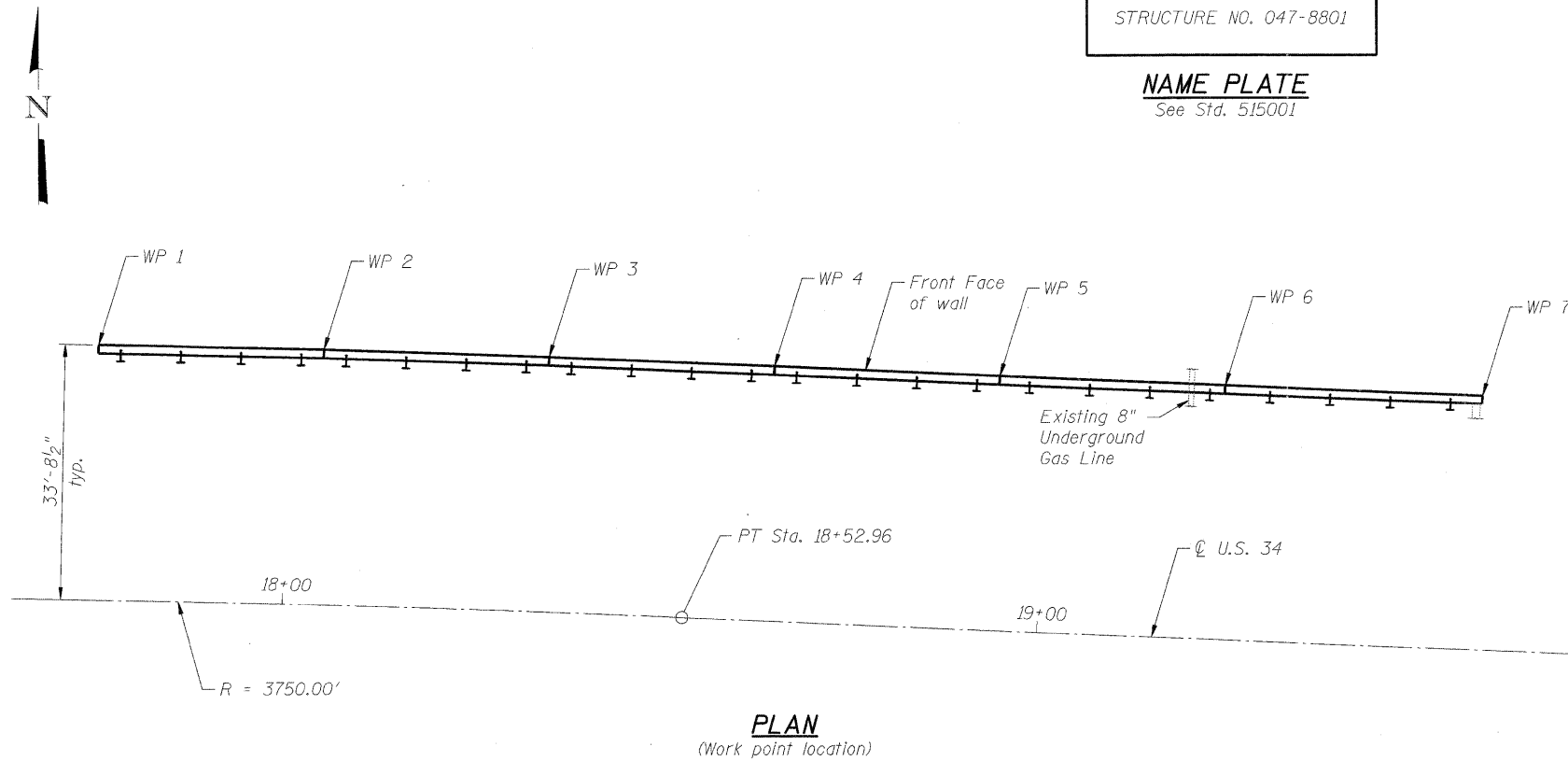
WORK POINTS & WALL ELEVATION

WP No.	Station	Offset Left Ft.	Top/Wall Elev.	Bott./Wall Elev.
1	17+75.00	33.71	619.74	610.99
2	18+04.73	33.71	618.53	609.78
3	18+34.47	33.71	617.32	608.57
4	18+64.30	33.71	616.11	607.36
5	18+94.30	33.71	614.90	606.15
6	19+24.30	33.71	613.69	604.94
6	19+24.30	33.71	613.69	603.94
7	19+58.55	33.71	612.35	602.60

STATION 17+75.00 TO 19+58.55
 BUILT 20__ BY
 STATE OF ILLINOIS
 F.A.P. RTE. 591 SEC. 14R-1
 STRUCTURE NO. 047-8801

NAME PLATE
 See Std. 515001

Note: Excavation and Backfill are included in the Roadway quantities.



* See Roadway Plans

TYPICAL WALL SECTION
 (Looking East)

ABBREVIATIONS

- E.F. Each Face
- N.F. Near Face
- F.F. Front Face
- B.F. Back Face
- WP Work Point

Note:
 Wall to be built along straight chords between adjacent construction joints & expansion joints.

T:\0829-PrairiePkwy-Ph2\StructCadd\Prefinal\US4 Retaining Wall 2\0478801-66985-002-DAT.dgn 05-MAY-2011 10:34

PB Americas, Inc. 230 WEST MONROE STREET, SUITE 900 CHICAGO, IL 60606 (312)762-8150	FILE NAME = 0478801-66985-002-DAT.dgn	DESIGNED - S. CHELBIAN	REVISED -	STATE OF ILLINOIS DEPARTMENT OF TRANSPORTATION	GENERAL DATA STRUCTURE NO. 047-8801		F.A.P. RTE. 591	SECTION 13R-2;14R-1 & BR-1(1);15R-1	COUNTY KENDALL	TOTAL SHEETS 429	SHEET NO. 308
	PLOT SCALE = NONE	DRAWN - D. C. PATEL	REVISED -		SHEET NO. 2 OF 11 SHEETS		CONTRACT NO. 66985		ILLINOIS FED. AID PROJECT		
	PLOT DATE = 5/5/2011	CHECKED - J. GRAINAWI	REVISED -								