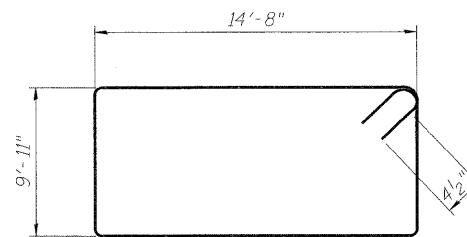
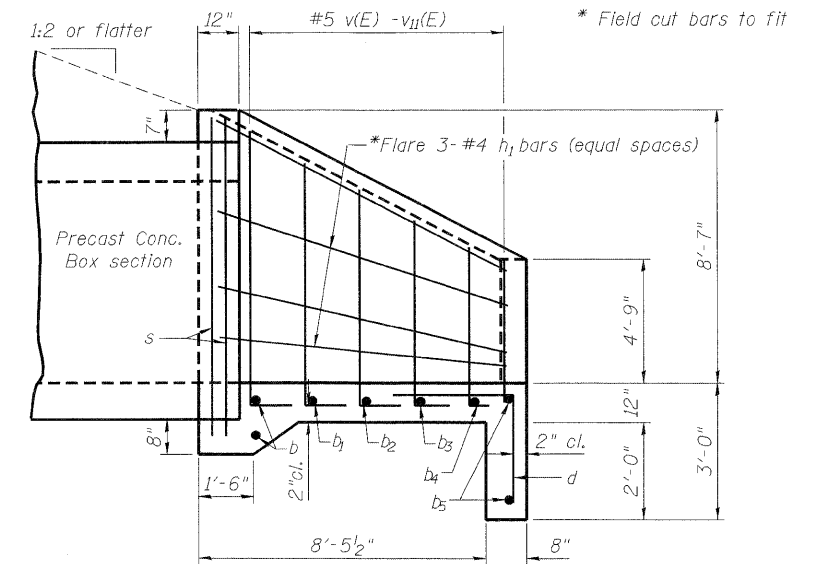


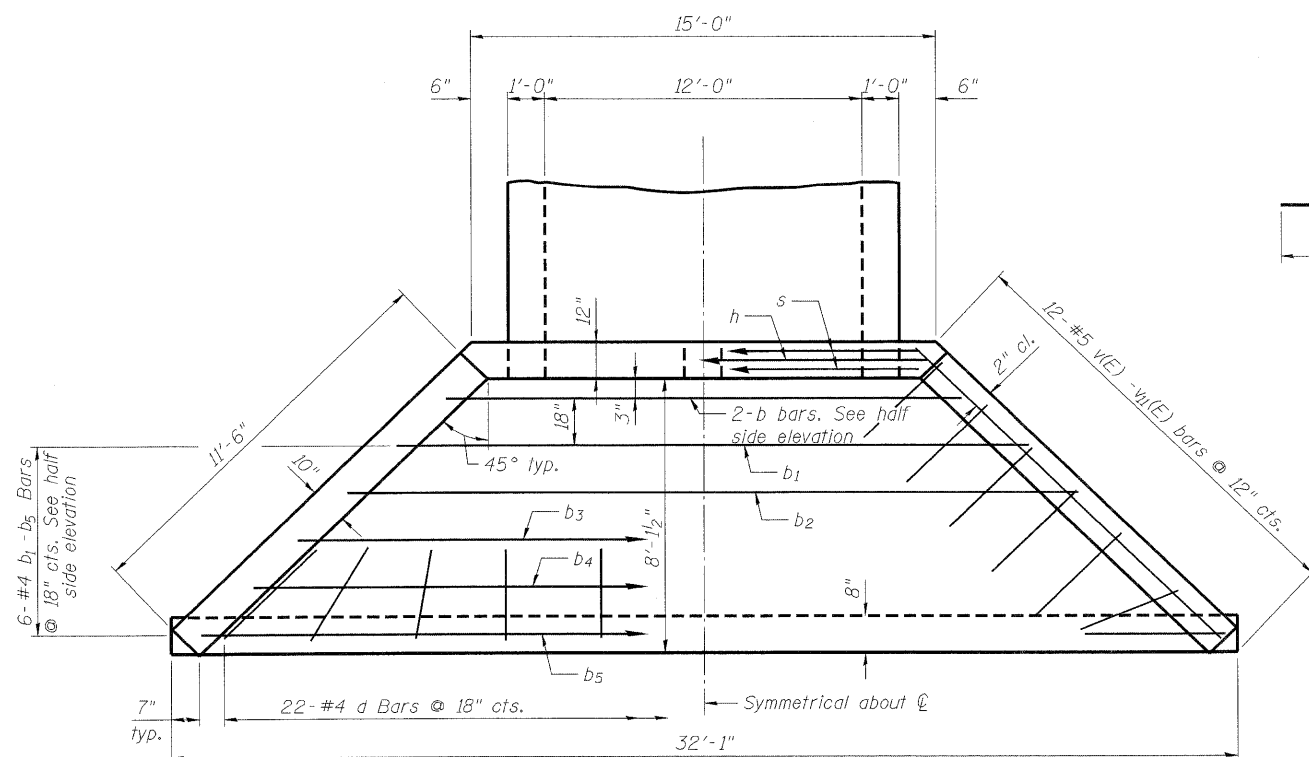
END ELEVATION



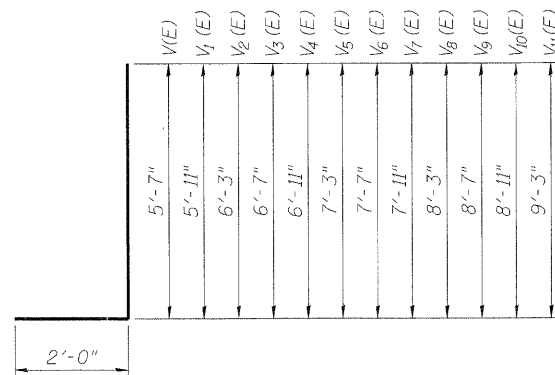
BAR s



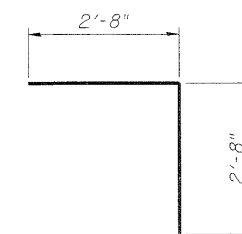
HALF SIDE ELEVATION



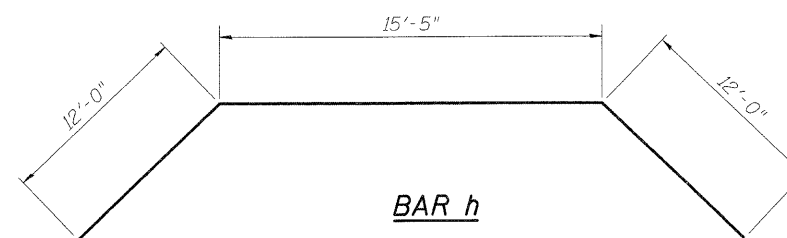
PLAN



BAR v(E) - v11(E)



BAR d



BAR h

BILL OF MATERIAL**

Bar	No.	Size	Length	Shape
b	4	#5	17'-2"	—
b1	2	#4	20'-2"	—
b2	2	#4	23'-2"	—
b3	2	#4	26'-2"	—
b4	2	#4	29'-2"	—
b5	4	#4	31'-9"	—
d	44	#4	5'-4"	└
h	2	#5	39'-5"	┌
h1	12	#4	12'-4"	—
s	4	#4	49'-11"	□
v(E)	4	#5	7'-7"	└
v1(E)	4	#5	7'-11"	└
v2(E)	4	#5	8'-3"	└
v3(E)	4	#5	8'-7"	└
v4(E)	4	#5	8'-11"	└
v5(E)	4	#5	9'-3"	└
v6(E)	4	#5	9'-7"	└
v7(E)	4	#5	9'-11"	└
v8(E)	4	#5	10'-3"	└
v9(E)	4	#5	10'-7"	└
v10(E)	4	#5	10'-11"	└
v11(E)	4	#5	11'-3"	└
Class SI Concrete			Cu. Yd.	34.4
Reinforcement Bars			Pound	760
Reinforcement Bars, Epoxy Coated			Pound	480

** For two end sections. The quantities shown are for information only.

T:\16829-PrairiePkwy-Pl2\Struct\Cadd\Pre\final\US34 WC98A Single Box Culvert\0472559-D366985-005-EDT.dgn
06-MAY-2011 10:18

PB Americas, Inc.
230 WEST MONROE STREET,
SUITE 900
CHICAGO, IL 60606
(312)782-8150

FILE NAME = 0472559-D366985-005-EDT.dgn	DESIGNED - H. Alkhatib	REVISED -
PLOT SCALE = NONE	CHECKED - P. Lopez	REVISED -
PLOT DATE = 5/6/2011	DRAWN - H. Alkhatib	REVISED -
	CHECKED - J. Gralnawl	REVISED -

**STATE OF ILLINOIS
DEPARTMENT OF TRANSPORTATION**

**CAST-IN-PLACE END SECTION DETAILS
STRUCTURE NO. 047-2559**
SHEET NO. 5 OF 6 SHEETS

F.A. RTE.	SECTION	COUNTY	TOTAL SHEETS	SHEET NO.
591	13R-2;14R-1 & BR-1(1);15R-1	KENDALL	429	322
CONTRACT NO. 66985			ILLINOIS FED. AID PROJECT	