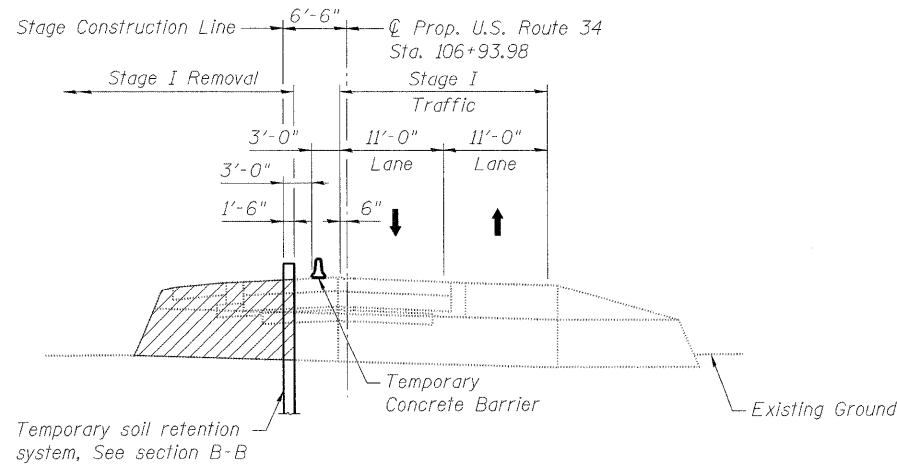
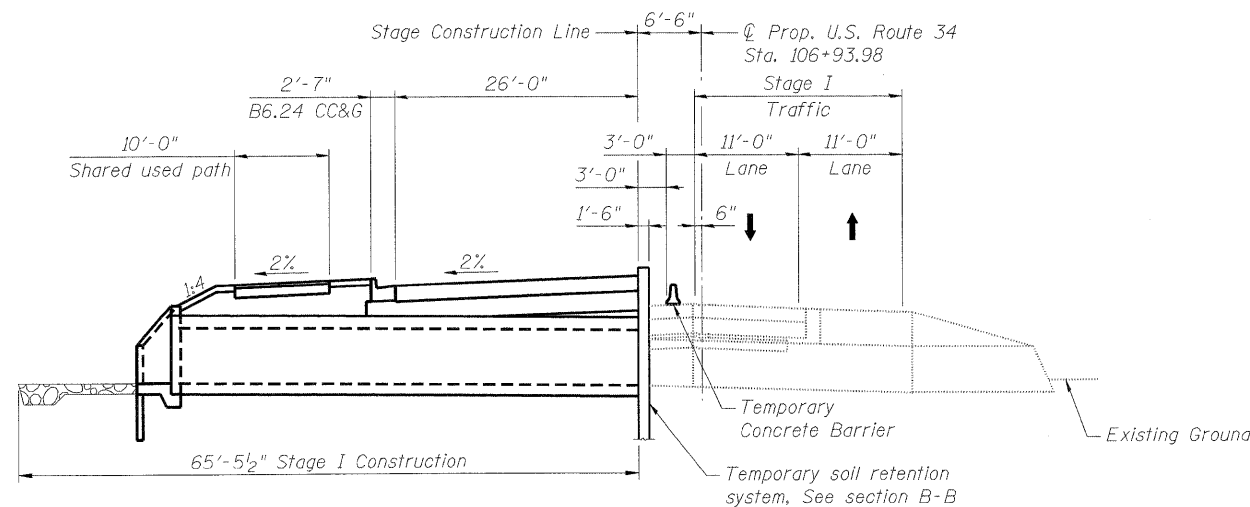


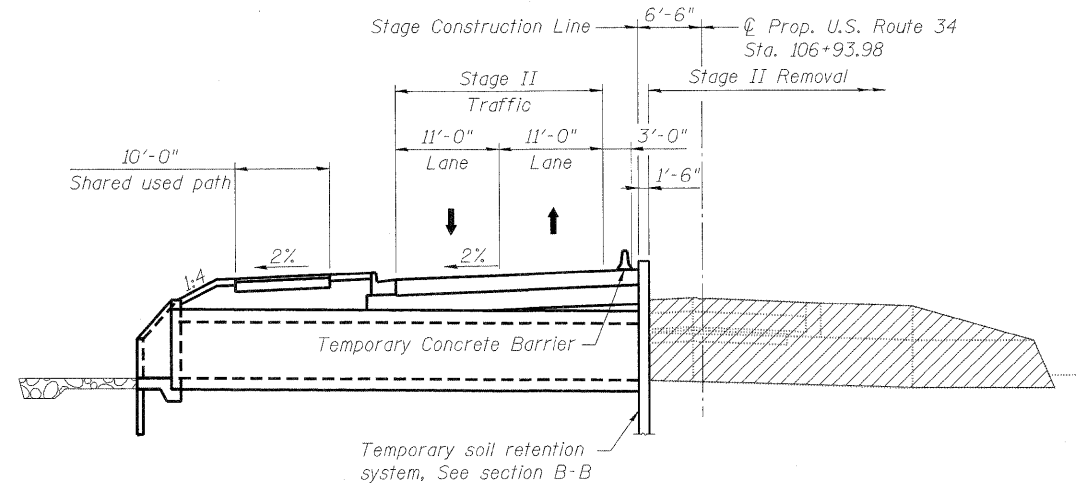
STAGE IA TEMPORARY WIDENING



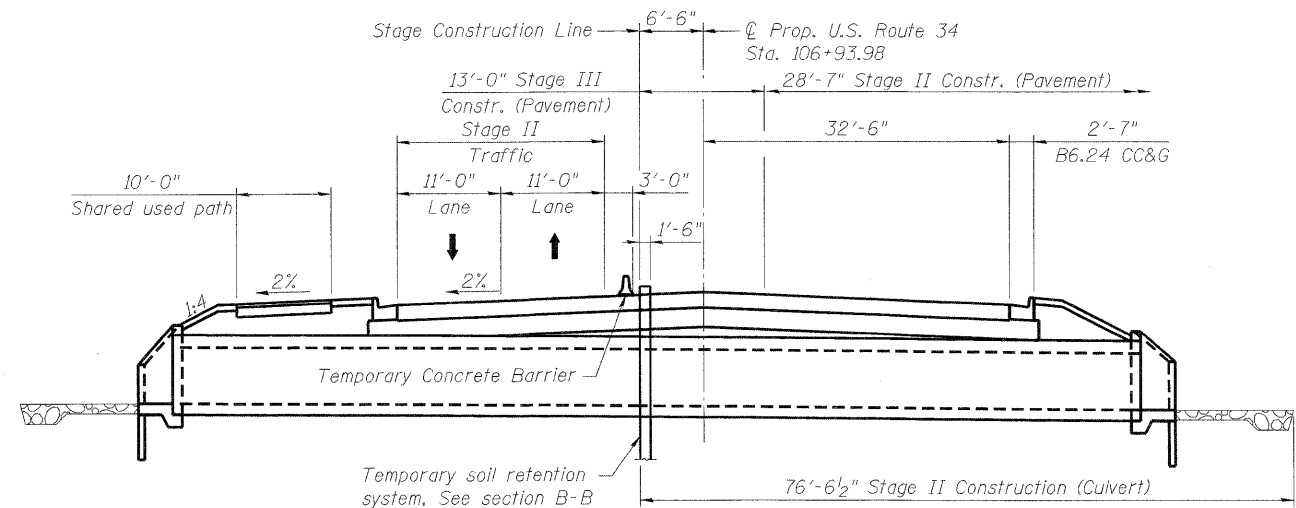
STAGE I REMOVAL



STAGE I CONSTRUCTION

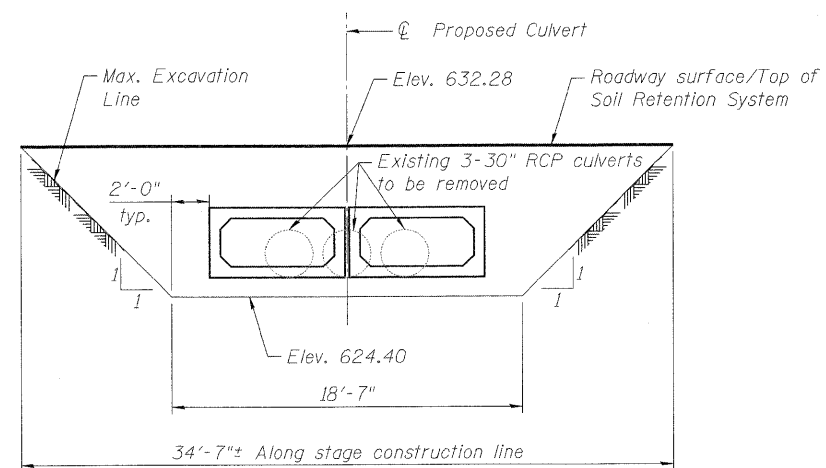


STAGE II REMOVAL



STAGE II AND III CONSTRUCTION

(See MOT plans for Stage III Traffic patterns)



SECTION B-B

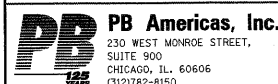
(Temporary Soil Retention System)

Note:
A cantilevered sheet piling design does not appear feasible and additional members or other retention systems may be necessary. The Contractor shall submit a temporary soil retention system design including plan details and calculations for review and acceptance by the Engineer.

LEGEND

- Indicates portions of Existing Pavement, Fill, Embankment, and Culvert to be removed
- Temporary Pavement

T:\16829-PrairiePkwy-Ph2\Struct\Cadd\Pre\final\US34 Double Box Culvert\0472541-D366985-002-STG.dgn 06-MAY-2011 10:17



FILE NAME = 0472541-D366985-002-STG.dgn
PLOT SCALE = NONE
PLOT DATE = 5/6/2011

DESIGNED - H. Alkhatib
CHECKED - R. Otręmbiak
DRAWN - H. Alkhatib
CHECKED - J. Gralnaw

REVISED -
REVISED -
REVISED -
REVISED -

**STATE OF ILLINOIS
DEPARTMENT OF TRANSPORTATION**

**STAGE CONSTRUCTION DETAILS
STRUCTURE NO. 047-2541**

SHEET NO. 2 OF 5 SHEETS

F.A. RTE.	SECTION	COUNTY	TOTAL SHEETS	SHEET NO.
591	13R-2;14R-1 & BR-1(1);15R-1	KENDALL	429	325
				CONTRACT NO. 66985

ILLINOIS FED. AID PROJECT