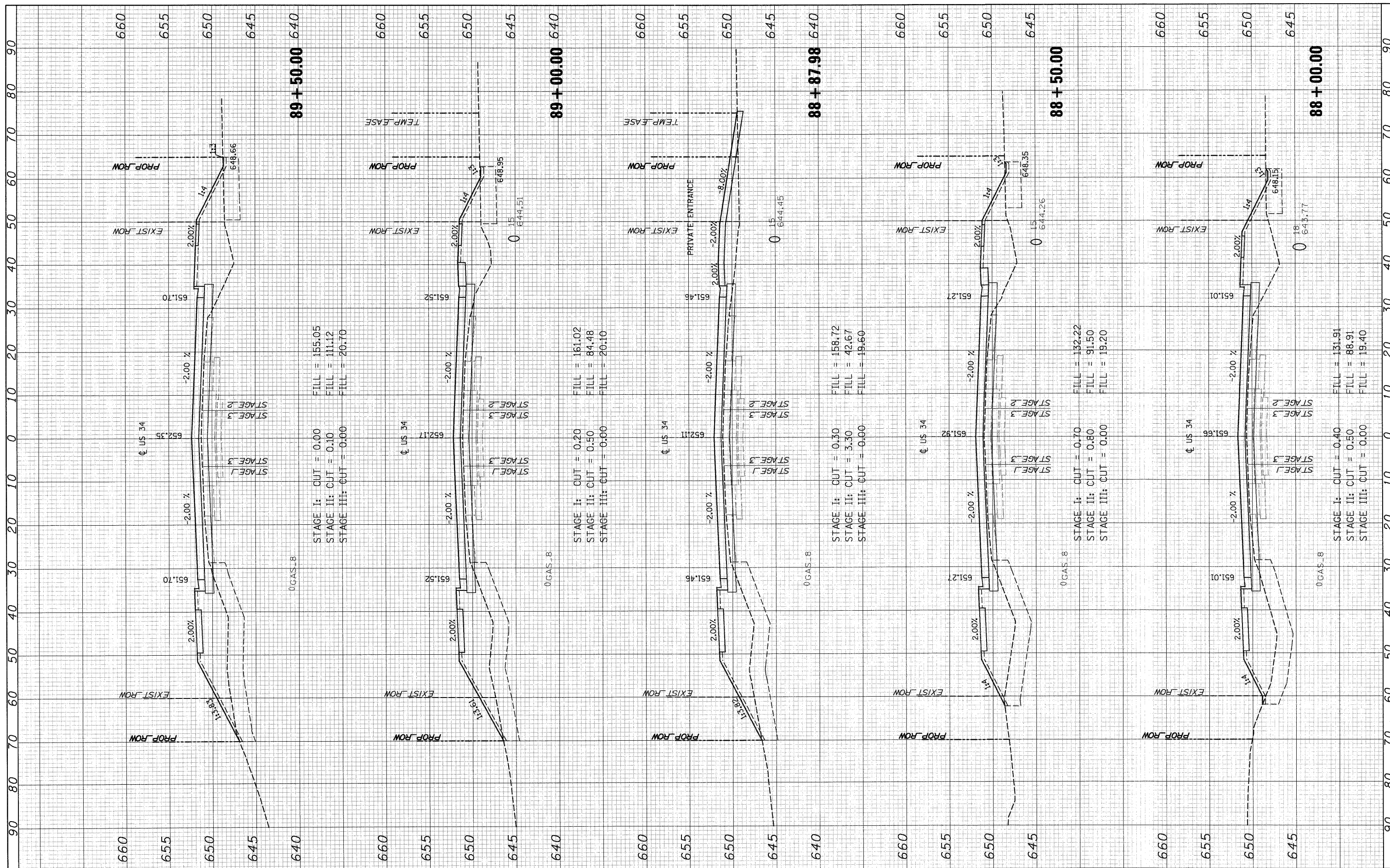


FINAL SURVEY PLOTTED DATE
 NOTE BOOK NO. DATE
 AREAS CHECKED

ORIGINAL SURVEY PLOTTED DATE
 NOTE BOOK NO. DATE
 AREAS CHECKED



STAGE I: CUT = 0.00
 STAGE II: CUT = 0.10
 STAGE III: CUT = 0.00

STAGE I: CUT = 0.20
 STAGE II: CUT = 0.50
 STAGE III: CUT = 0.00

STAGE I: CUT = 0.30
 STAGE II: CUT = 3.30
 STAGE III: CUT = 0.00

STAGE I: CUT = 0.70
 STAGE II: CUT = 0.80
 STAGE III: CUT = 0.00

STAGE I: CUT = 0.40
 STAGE II: CUT = 0.50
 STAGE III: CUT = 0.00

| | | | | | | | | | | | | |
|--|-------------------------------|-------------------|-----------|---|-----------------------------------|---------------------------|--------------------------------|---------------------------|--|-------------------|---------------------|------------------|
| FILE NAME = T:\16829-Prain-ePkwy-Ph2\Cv11\Plans\Xshfts\0366985-US34xssheet-FINAL-plotting.dgn | USER NAME = MMS | DESIGNED - MMS | REVISED - | STATE OF ILLINOIS DEPARTMENT OF TRANSPORTATION | US ROUTE 34 CROSS SECTIONS | | | F.A.P. RTE. 591 | SECTION 13R-2;14R-1 & BR-1(1);15R-1 | COUNTY KENDALL | TOTAL SHEETS 429 | SHEET NO. 408 |
| | PLOT SCALE = | DRAWN - MMS | REVISED - | | SCALE: | SHEET NO. 65 OF 86 SHEETS | STA. 88+00.00 TO STA. 89+50.00 | ILLINOIS FED. AID PROJECT | | | | |
| | PLOT DATE = 19-AUG-2011 08:53 | CHECKED - KJB | REVISED - | | | | | | | | | |
| | | DATE - 08-18-2011 | REVISED - | | | | | | | | | |